

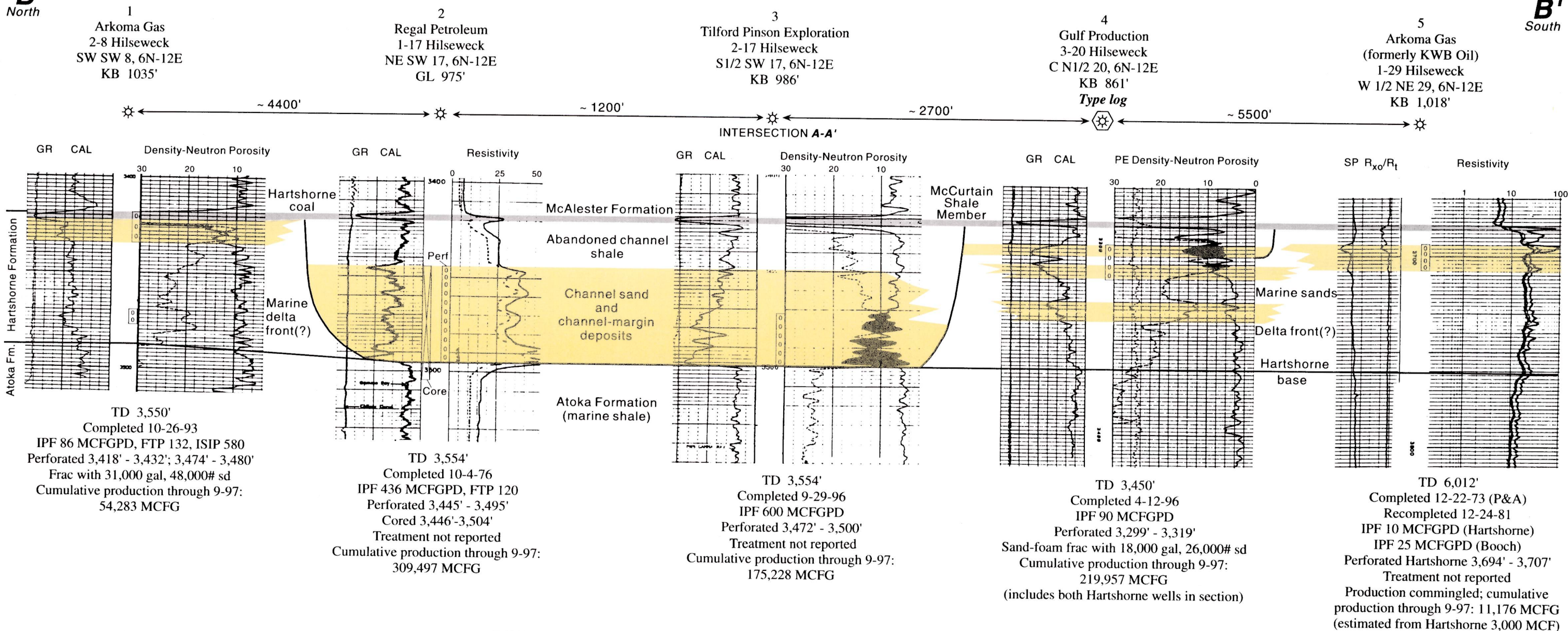
**B**  
North**B'**  
South

Figure 13. Stratigraphic cross section *B-B'* and index map, Cabaniss NW field, Pittsburg and Hughes Counties, Oklahoma. Datum: top of Hartshorne coal. Vertical scale, 1 in. = 50 ft; no horizontal scale. GR = gamma ray, SP = spontaneous potential,  $R_{xo}$  = resistivity of flushed zone,  $R_t$  = resistivity of uninvaded zone ("true" resistivity), CAL = caliper, PE = photoelectric.