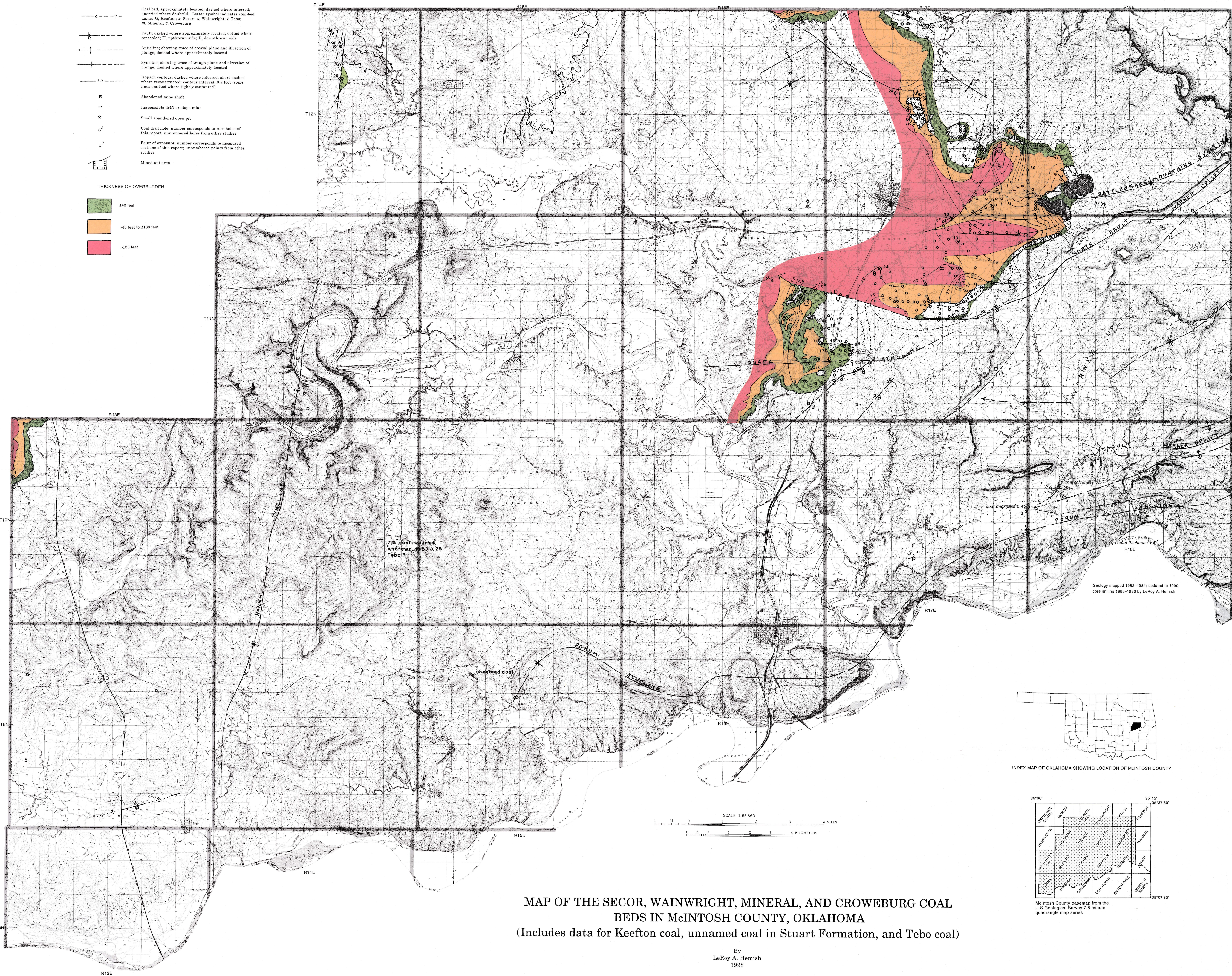


EXPLANATION

- Coal bed, approximately located; dashed where inferred; queried where doubtful. Letter symbol indicates coal-bed name: *K*, Keefton; *S*, Secor; *W*, Wainwright; *T*, Tebo; *M*, Mineral; *C*, Croweburg
- Fault; dashed where approximately located; dotted where concealed; *U*, upthrown side; *D*, downthrown side
- Anticline; showing trace of crestal plane and direction of plunge, dashed where approximately located
- Syncline; showing trace of trough plane and direction of plunge, dashed where approximately located
- Isopach contour; dashed where inferred; short dashed where reconstructed; contour interval, 0.2 foot (some lines omitted where tightly contoured)
- Abandoned mine shaft
- Inaccessible drift or slope mine
- Small abandoned open pit
- Coal drill hole; number corresponds to core holes of this report; unnumbered holes from other studies
- Point of exposure; number corresponds to measured sections of this report; unnumbered points from other studies
- Mined-out area

THICKNESS OF OVERBURDEN

- ≤40 feet
- >40 feet to ≤100 feet
- >100 feet



MAP OF THE SECOR, WAINWRIGHT, MINERAL, AND CROWEBURG COAL
BEDS IN McINTOSH COUNTY, OKLAHOMA
(Includes data for Keefton coal, unnamed coal in Stuart Formation, and Tebo coal)

By
LeRoy A. Hemish
1998