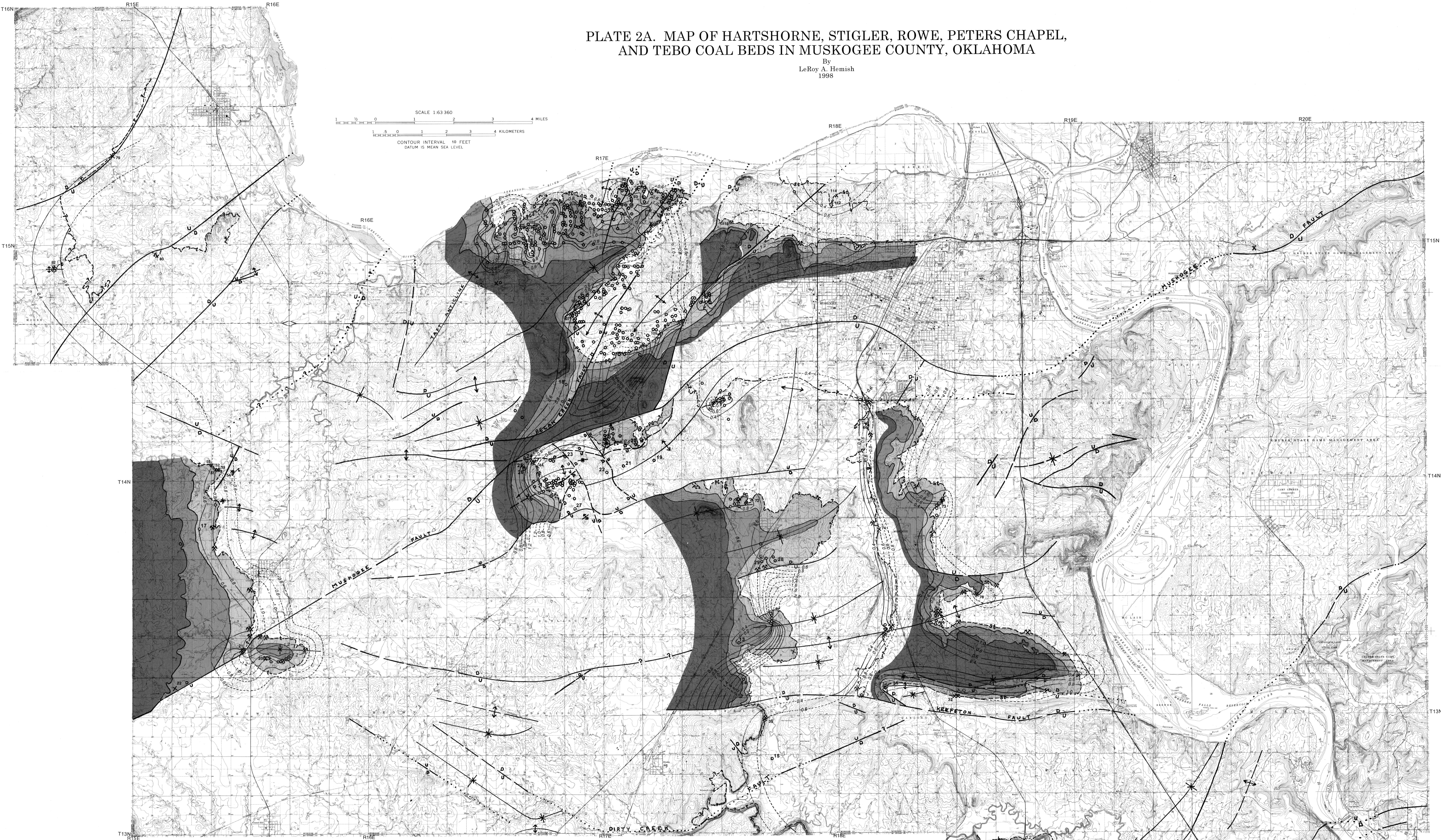


PLATE 2A. MAP OF HARTSHORNE, STIGLER, ROWE, PETERS CHAPEL,
AND TEBO COAL BEDS IN MUSKOGEE COUNTY, OKLAHOMA

By
LeRoy A. Hemish
1998



EXPLANATION

Coal bed approximately located; dashed where inferred, queried where doubtful. Letter symbol indicates coal bed name: st, Stigler; r, Rowe; pe, Peters Chapel; t, Tebo; h, Hartshorne.

Fault: dashed where approximately located; dotted where concealed; U, upthrown side; D, downthrown side.

Anticline, showing crestline and direction of plunge; dashed where approximately located; dotted where concealed.

Syncline, showing troughline; dashed where approximately located.

Topographic contour, dashed where reconstructed; contour interval, 10 ft (some lines omitted where tightly contoured).

Abandoned mine shaft.

Inaccessible drift or slope mine.

Small abandoned open pit; if numbered, number corresponds to measured section of this report.

Coal drill hole; number corresponds to core-hole log, Appendix 2; unnumbered holes from other studies.

Point of exposure; number corresponds to measured sections of this report; unnumbered points from other studies; numbers in tenths of ft are coal thickness of isolated exposures.

Mined-out area.

THICKNESS OF OVERBURDEN (shown for Stigler, Peters Chapel, and Tebo coals only).

≤40 ft.

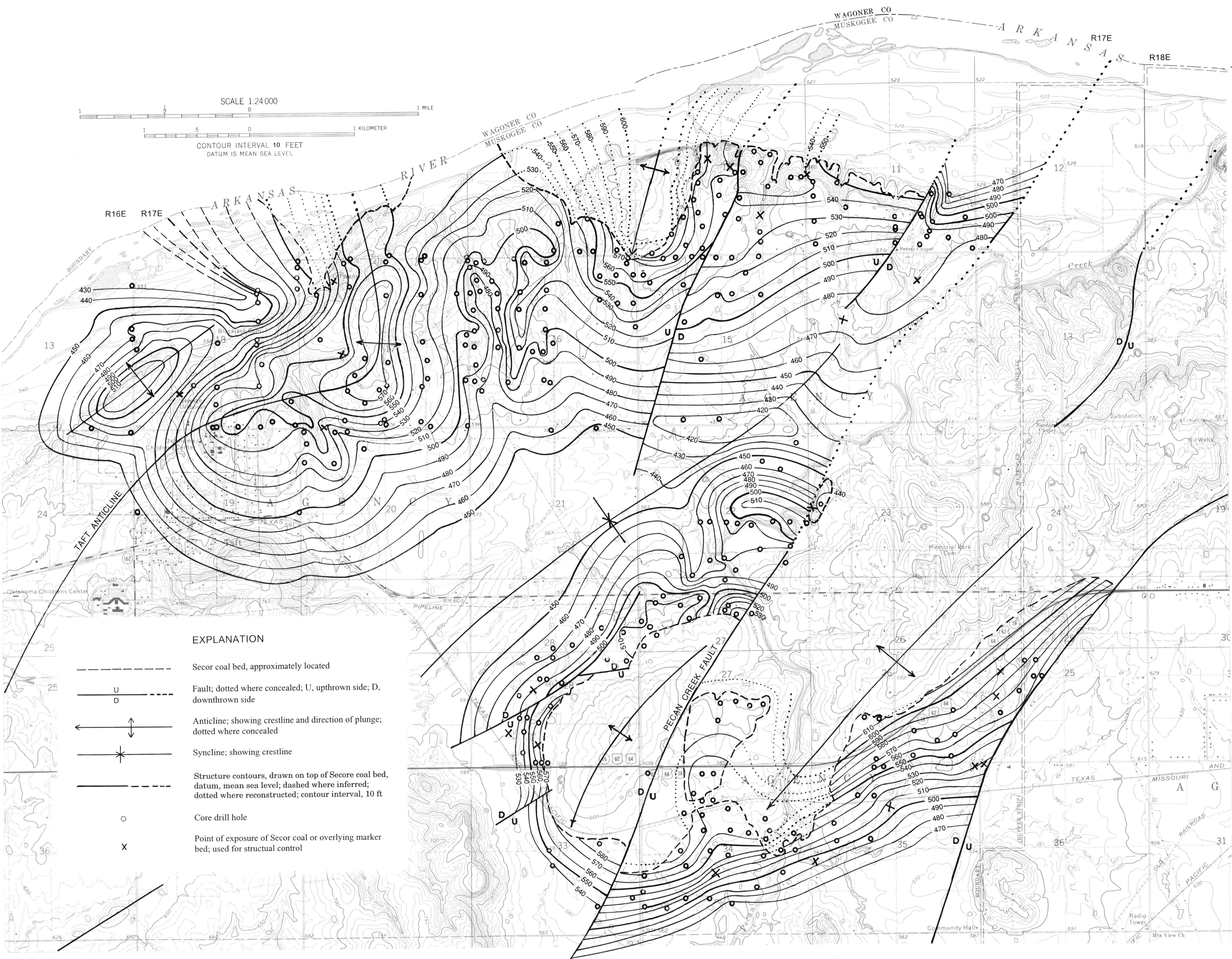
>40 ft to ≤100 ft.

>100 ft.

Note: Thickness of overburden divisions omitted in some areas where coal is deemed to be non-economic.

PLATE 2B. STRUCTURE-CONTOUR MAP OF TOP OF SECOR COAL BED IN
NORTHWESTERN MUSKOGEE COUNTY, OKLAHOMA

By
LeRoy A. Hemish
1998



EXPLANATION

Secor coal bed, approximately located.

Fault; dotted where concealed; U, upthrown side; D, downthrown side.

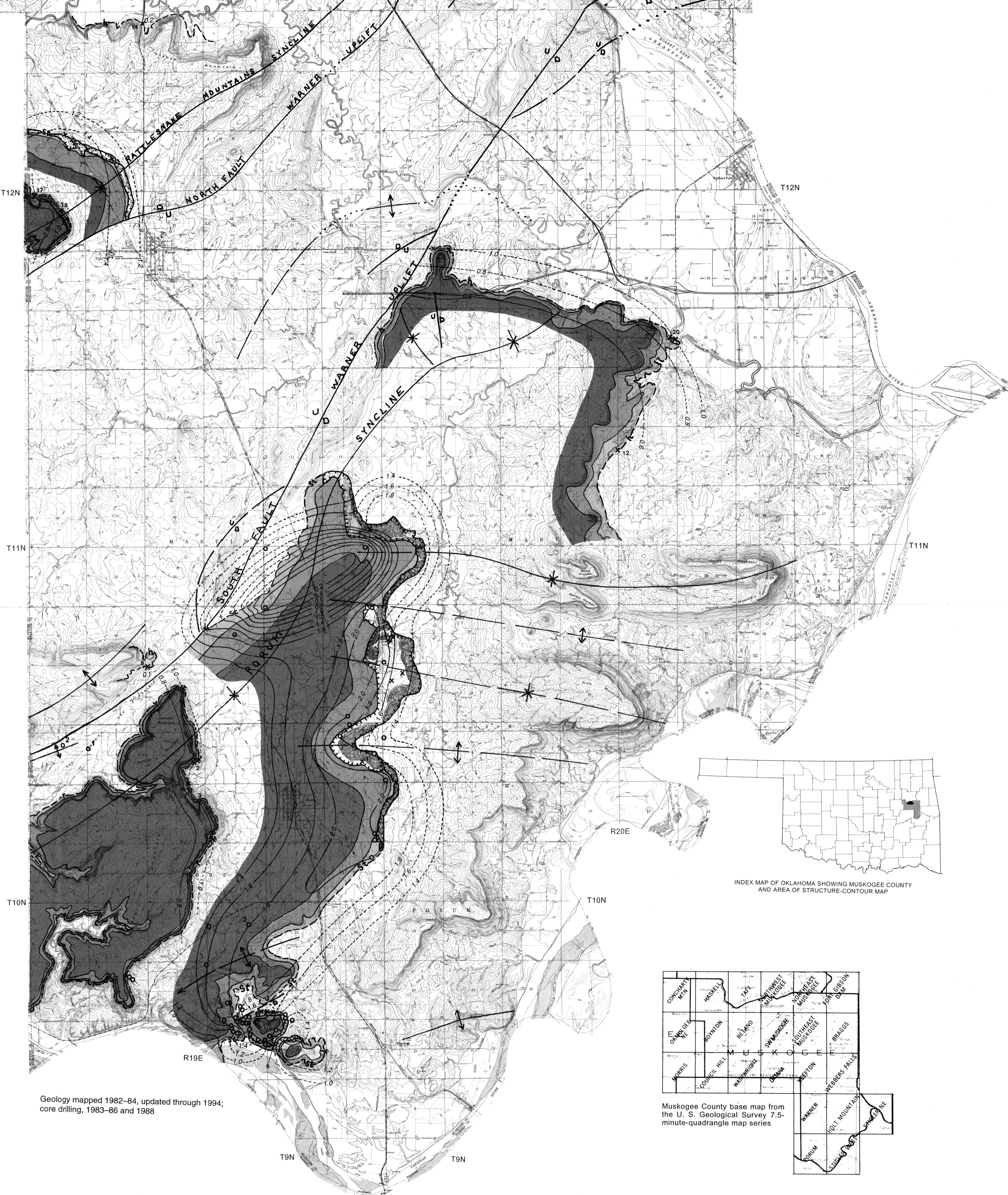
Anticline, showing crestline and direction of plunge; dashed where approximately located; dotted where concealed.

Syncline, showing crestline.

Structure contours, drawn on top of Secor coal bed, datum, mean sea level; dashed where inferred, dotted where reconstructed; contour interval, 10 ft.

Core drill hole.

Point of exposure of Secor coal or overlying marker bed; used for structural control.



INDEX MAP OF OKLAHOMA SHOWING MUSKOGEE COUNTY AND AREA OF STRUCTURE-CONTOUR MAP.

Muskogee County base map from the U. S. Geological Survey 7.5-minute-quadangle map series.

Geology mapped 1982-84, updated through 1994; core drilling, 1983-86 and 1988.