

C

Northwest

C'

Southeast

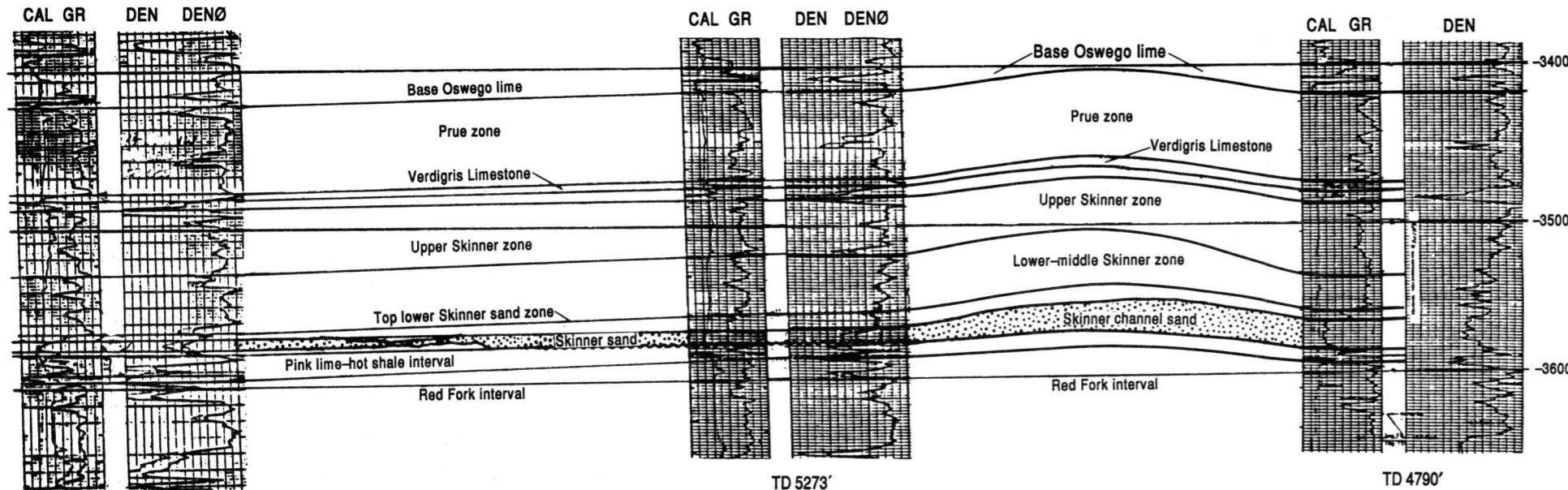
MacKellar, Inc.
4 Warren
SW SW 24, 21N-1W
KB 1094'
INTERSECTION A-A'

MacKellar, Inc.
1-B Warren
NE NW 25, 21N-1W
KB 1140'

Harris Minerals
3-25 Aigner
NW SW NE 25, 21N-1W
KB 1101'

~6336 feet

~3062 feet



TD 5220'
Perforated 4660'-4670',
acidized and fractured
Completed 12-6-83
GTY 41°, GOR 854:1
IPF 205 BOPD, 715 MCFGPD,
and no water
Cumulative Production
12-83 through 12-90
35,607 BO and 149,619 MCFG

TD 5273'
Perforated 4706'-4717',
acidize and fractured
Completed 1-20-84
IPF 13 BOPD, 493 MCFGPD,
and 25 BW
GTY 41°, GOR 2134:1
Cumulative Production
6-83 through 11-89
70,499 BO and 211,365 MCFG
(4-well lease)

TD 4790'
Perforated 4662'-4679',
acidize and fractured
Completed 4-14-84
IPF 180 BOPD, 90 MCFGPD
and 15 BW
GTY 40°, GOR 500:1
Cumulative Production
2-84 through 11-89
44,888 BO and 137,458 MCFG

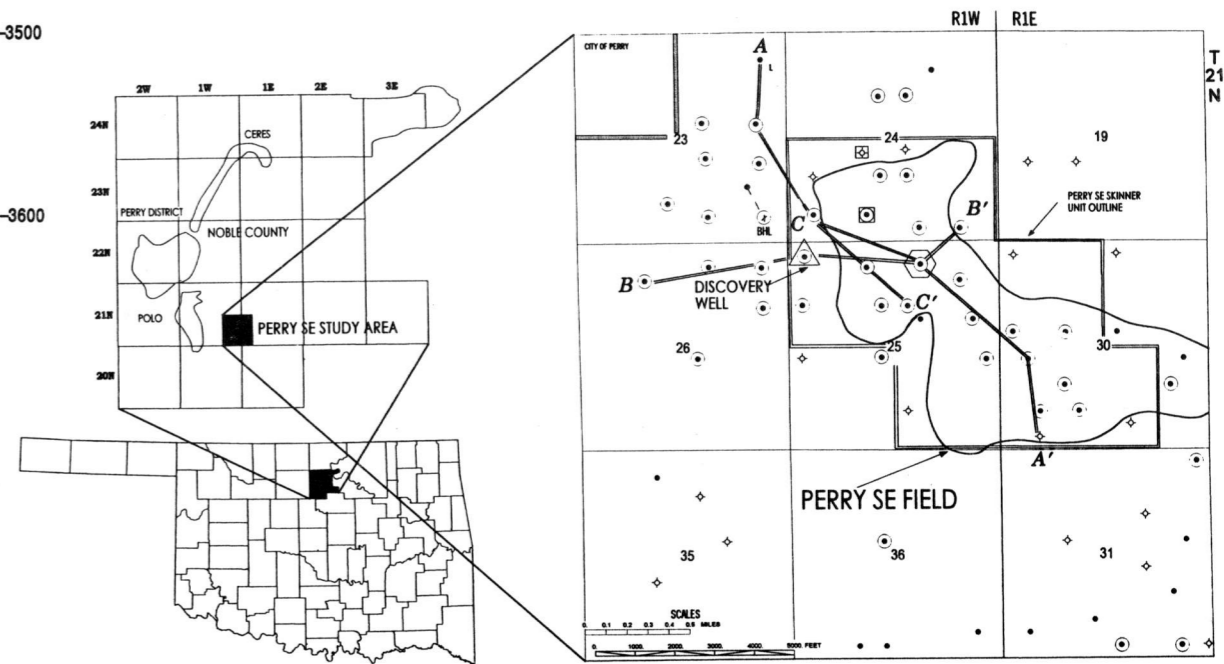


Figure 32. Structural and stratigraphic cross section C-C', Perry SE Skinner field area, southern Noble County, Oklahoma. (Datum: Sea Level, no horizontal scale)