

B
West

B'
East

Mackellar, Inc.
1 Bridal
SW NE NW 26, 21N-1W
KB 1047'

Mackellar, Inc.
1 Warren
S/2 NW NW 25, 21N-1W
KB 1066'

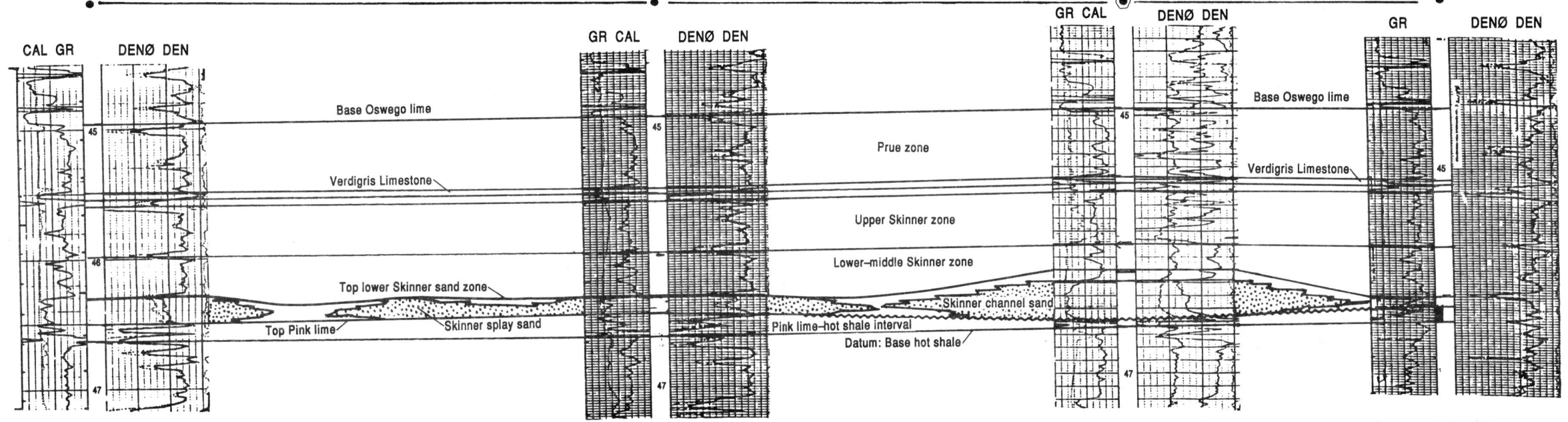
Harris Minerals Corp.
1-25 Aigner
NW NE 25, 21N-1W
KB 1087'

Mackellar, Inc.
3 B Warren
SW SE SE 24, 21N-1W
KB 1065'

~8712 feet

~6283 feet

~2904 feet



TD 5315'
Perforated 4630'-4646',
acidized and fractured
Completed 6-21-84
IPP 20 BOPD, 35 MCFGPD
and 20 BW
GTY 41.0°, GOR 1750:1
Cumulative Production
6-84 through 3-91
5,217 BO, no gas reported

TD 5328'
Perforated Mississippi lime 4830'-
4970', acidized and fractured
Completed 6-27-83
IPP 16 BOPD and 152 BLW/21
GTY 41°
OWWO: CIBP 4750'
Perforated 4634'-4642',
acidized and fractured
Completed 8-18-83
IPP 45 BOPD, 175 MCFGPD,
and 20 BLW
GTY 41°, GOR 2685:1
Cumulative Production
6-88 through 11-89
70,499 BO and 211,365 MCFG
(4-well lease)

TD 5353'
Perforated 4628'-4655',
acidize and fractured
Completed 12-23-83
IPF 832 BOPD and
950 MCFGPD
GTY 41°, GOR 1142:1
Cumulative Production 12-83
through 12-90
153,073 BO and 260,187 MCFG

TD 4,725'
Perforated 4580'-4588',
acidize and fractured
Completed 2-5-84
GTY 41°, GOR 5681:1
IPF 132 BOPD, 750 MCFGPD,
and no water
Cumulative Production
12-83 through 11-89
152,354 BO and 482,910 MCFG
(3-well lease)

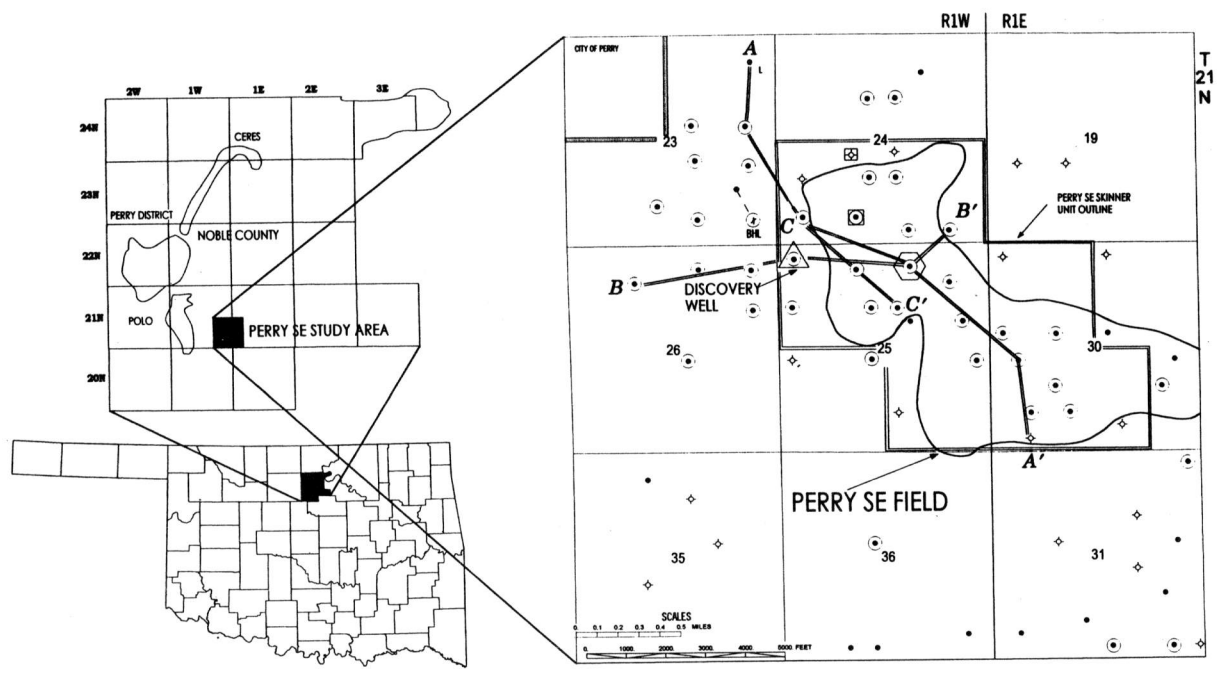


Figure 21. Structural and stratigraphic cross section B-B', Perry SE Skinner sand unit, southern Noble County, Oklahoma. (Vertical scale: 1 in. ≈ 100 ft, no horizontal scale)