

B WEST

EAST B'

Bell Oil & Gas Company
1 Lucas
SE NW 4, 8N-11E
KB 827'

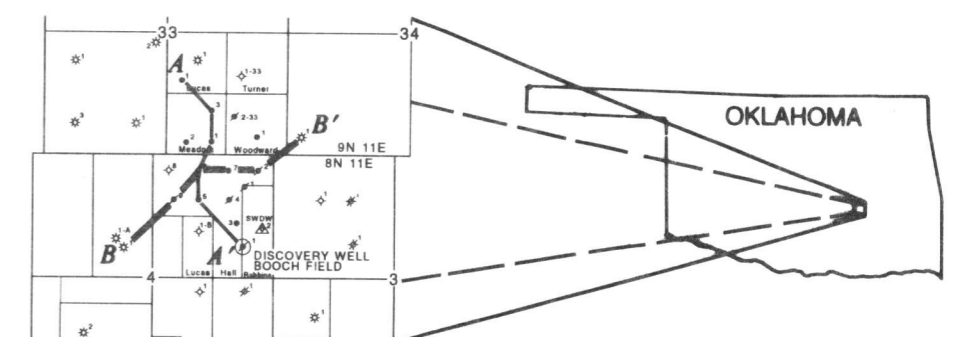
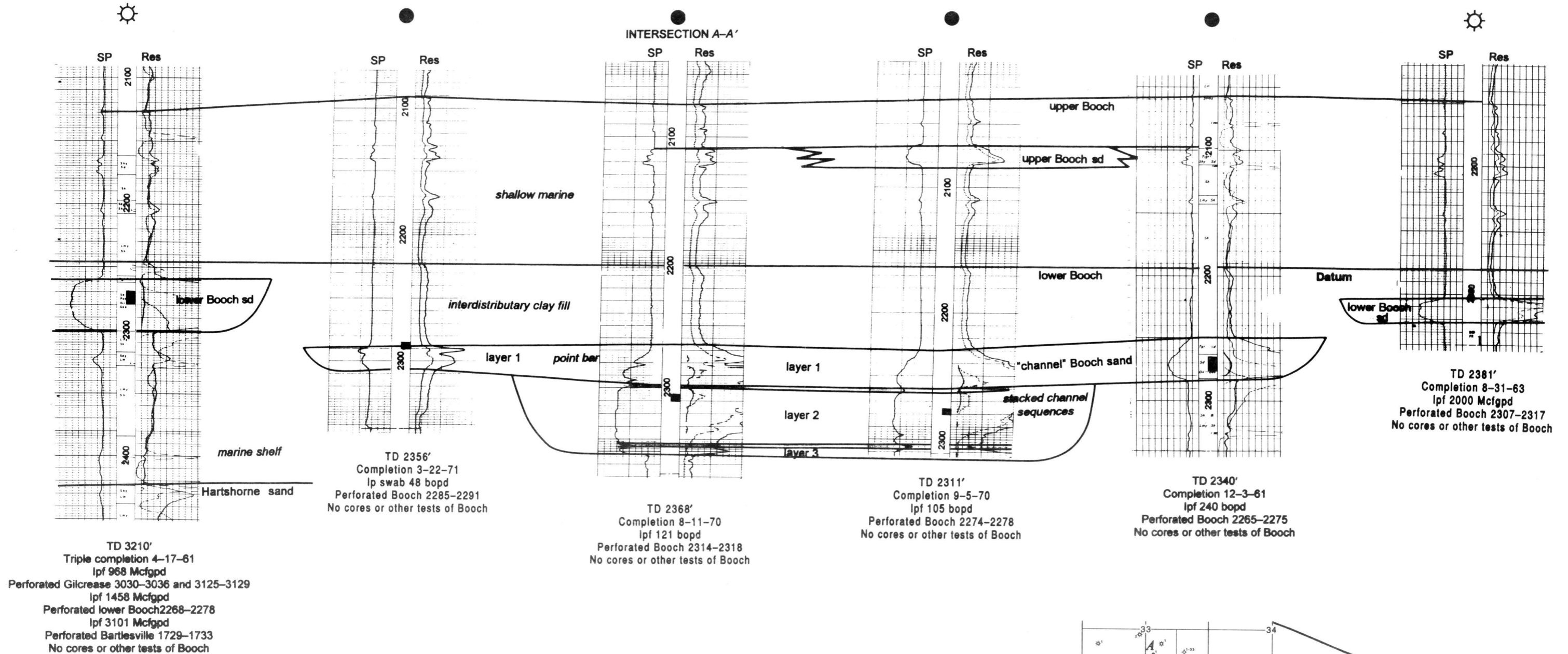
Lubell Oil Company
9 Hall
E2 SW NW NE 4, 8N-11E
KB 780'

Lubell Oil Company
6 Hall
NE NW NE 4, 8N-11E
KB 779'

Lubell Oil Company
7 Hall
NW NE NE 4, 8N-11E
KB 753'

Bell Oil & Gas Company
2 Hall
NE NE NE 4, 8N-11E
KB 741'

Bell Oil & Gas Company
1 C.H. Crawford
SW SW SW 34, 9N-11E
KB 745'



INDEX MAP SHOWING LOCATION OF CROSS SECTIONS

Figure 46. Stratigraphic cross section B-B', Booch oil reservoir, Greasy Creek field, Hughes County, Oklahoma. Location of wells also shown on Figs. 49-53.

Vertical scale 1 in. = 80 ft
No Horizontal scale
Datum: top lower Booch