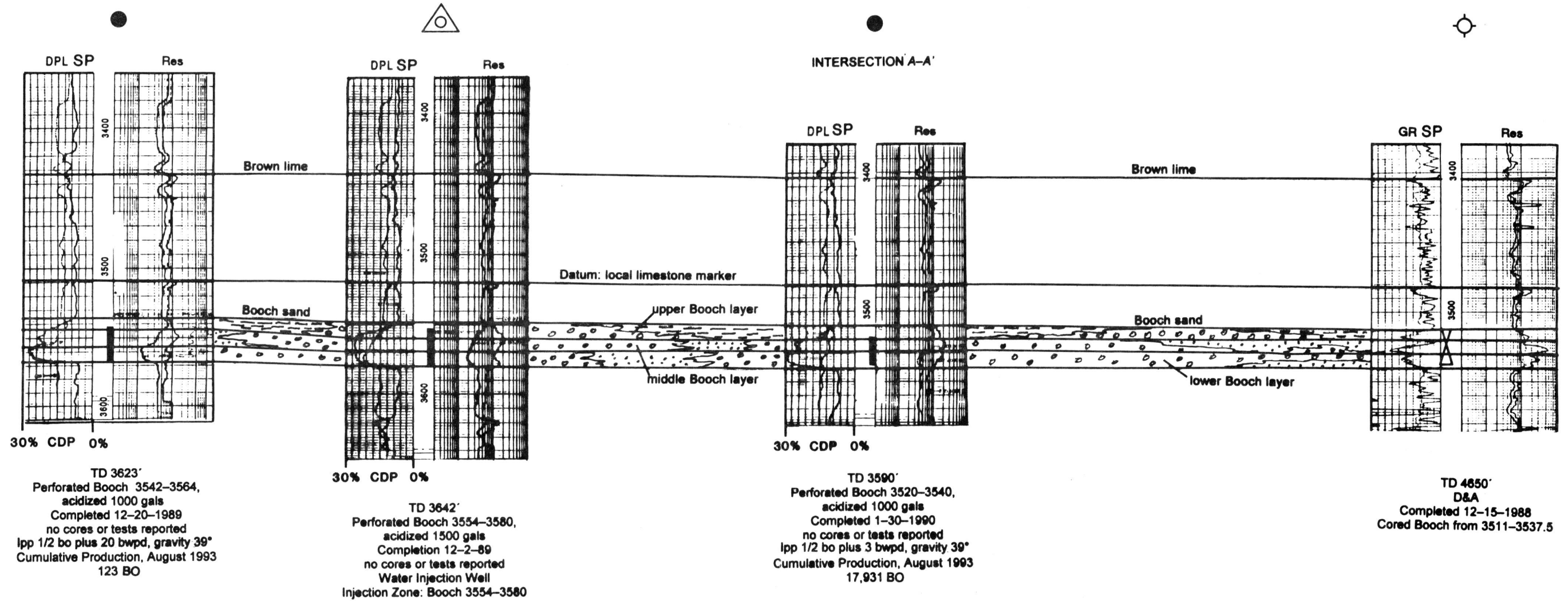


Beard Oil Company
821 Wewoka NW Booch Sand Unit
NW SW NW 8, 9N-7E
KB 1013'

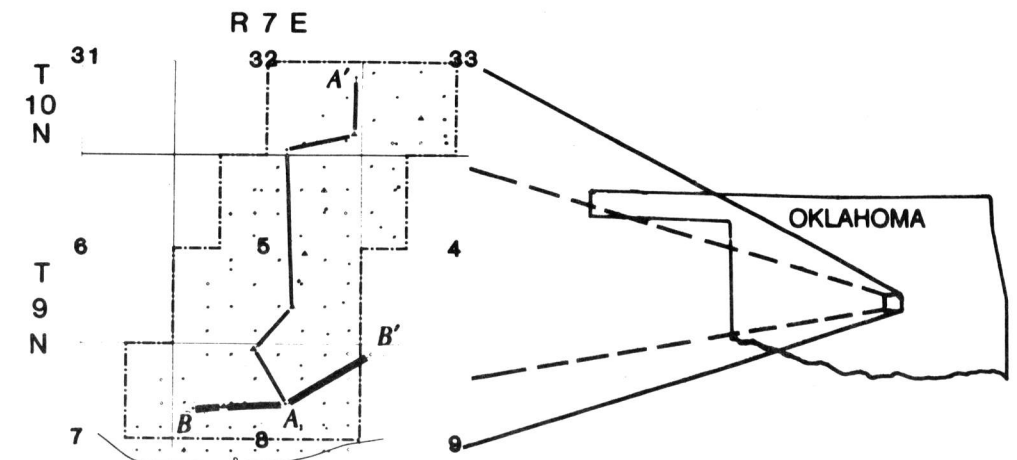
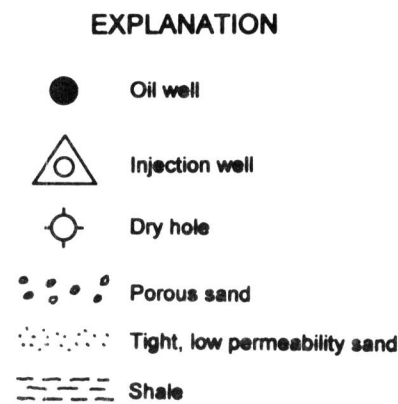
Beard Oil Company
832-W Wewoka NW Booch Sand Unit
NW SE NW 8, 9N-7E
KB 1035'

Beard Oil Company
851 Wewoka NW Booch Sand Unit
NW SW NE 8, 9N-7E
KB 1816'

Geox Resources
9-A King
NW NW NW 9, 9N-7E
KB 1050'



Vertical scale: 1.25 in. = 100 ft
Horizontal scale: 1 in. = 757 ft
(For intervals between logs)



INDEX MAP SHOWING LOCATION OF CROSS SECTIONS

Figure 33. Stratigraphic cross section B-B' Wewoka N.W. Booch unit T. 9-10 N., R. 7 E., Seminole County, Oklahoma. Stratigraphic strike section for the Booch sand.