

A WEST

EAST A'

John P. Castleman, Jr. 16-3A Simmons
E 1/2 W 1/2 NE SE 16, 3N-10E, CM
KB 3627'

Dawn Energy Company 2-15 Mason
W 1/2 NW SW 15, 3N-10E, CM
KB 3620'

Wolf Creek Exploration 1-15 Cline
SE SE NW 15, 3N-10E, CM
KB 3620'

Cotton Petroleum 1 Gaither
NE NE SE 15, 3N-10E, CM
KB 3615'

Skelly Oil Company 2 Dougherty
NW SW 14, 3N-10E, CM
KB 3602'

-1110 feet

-2220 feet

-2700 feet

-1060 feet

INTERSECTION C-C'

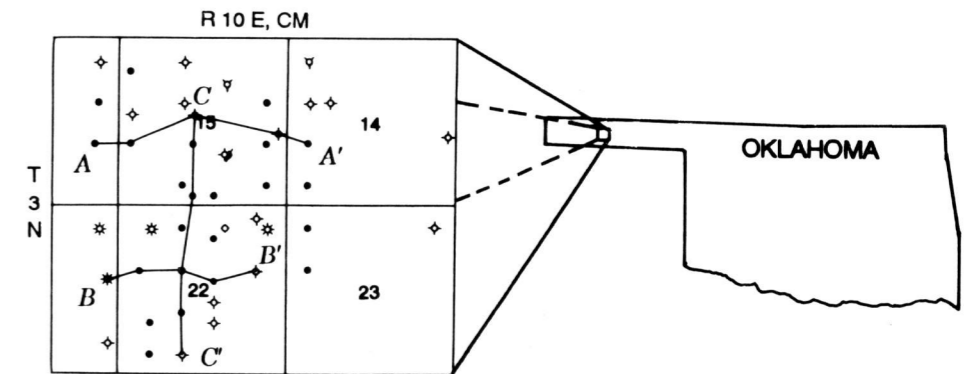
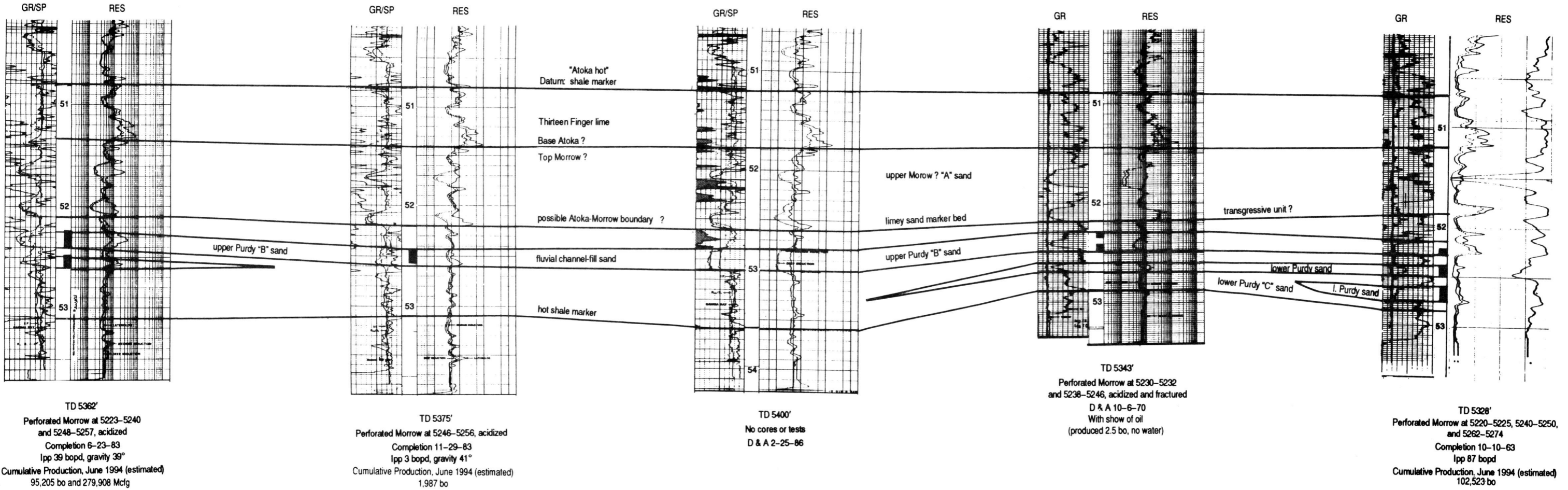


Figure 42. Stratigraphic cross section A-A', Rice NE field, western Texas County, Oklahoma.

INDEX MAP SHOWING LOCATION OF CROSS SECTIONS