

B
North

B'
South

- 1
Bear Prod. Inc.
Wisenhunt #1-6
W/2 E/2 SW SW
Sec 6-10N-18E
GLE: 617'
- 2
Cities Service
Watts #A-1
SW SW Sec 7-10N-18E
KBE: 636'
- 3
Cities Service
Kinney-Gray #A-1
S/2 N/2 SW NW Sec 18-10N-18E
KBE: 641'
- 4
Cities Service
Army Corps of Engr. #B-1
NW NW Sec 30-10N-18E
KBE: 615'
- 5
Cities Service
Phillips #E-1
NE SW NE NE Sec 1-9N-17E
KBE: 833'
- 6
Sun Gas Company
Twidwell # 1
SE SW Sec 6-9N-18E
GLE: 880'

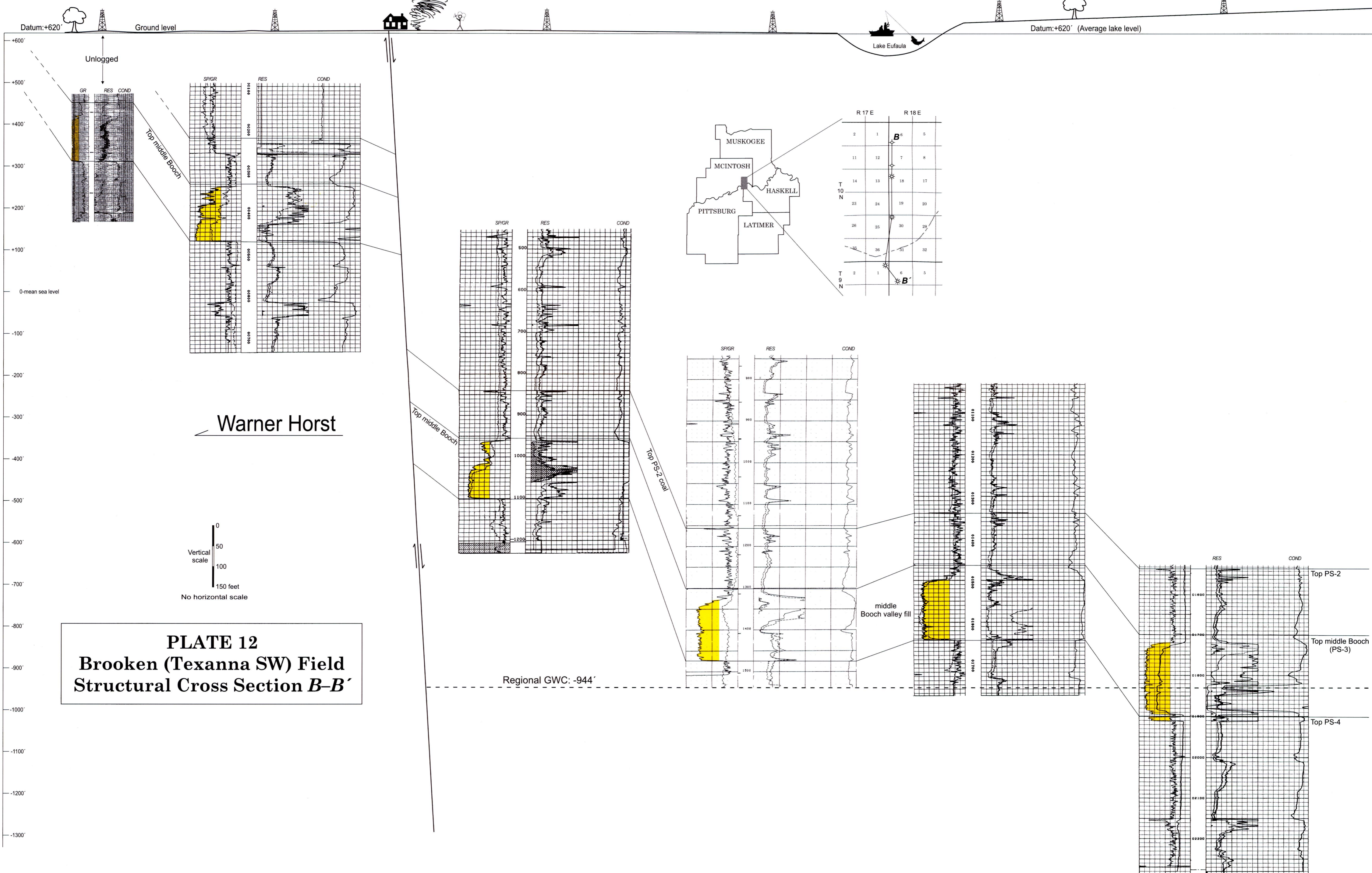


PLATE 12
Brooken (Texanna SW) Field
Structural Cross Section B-B'