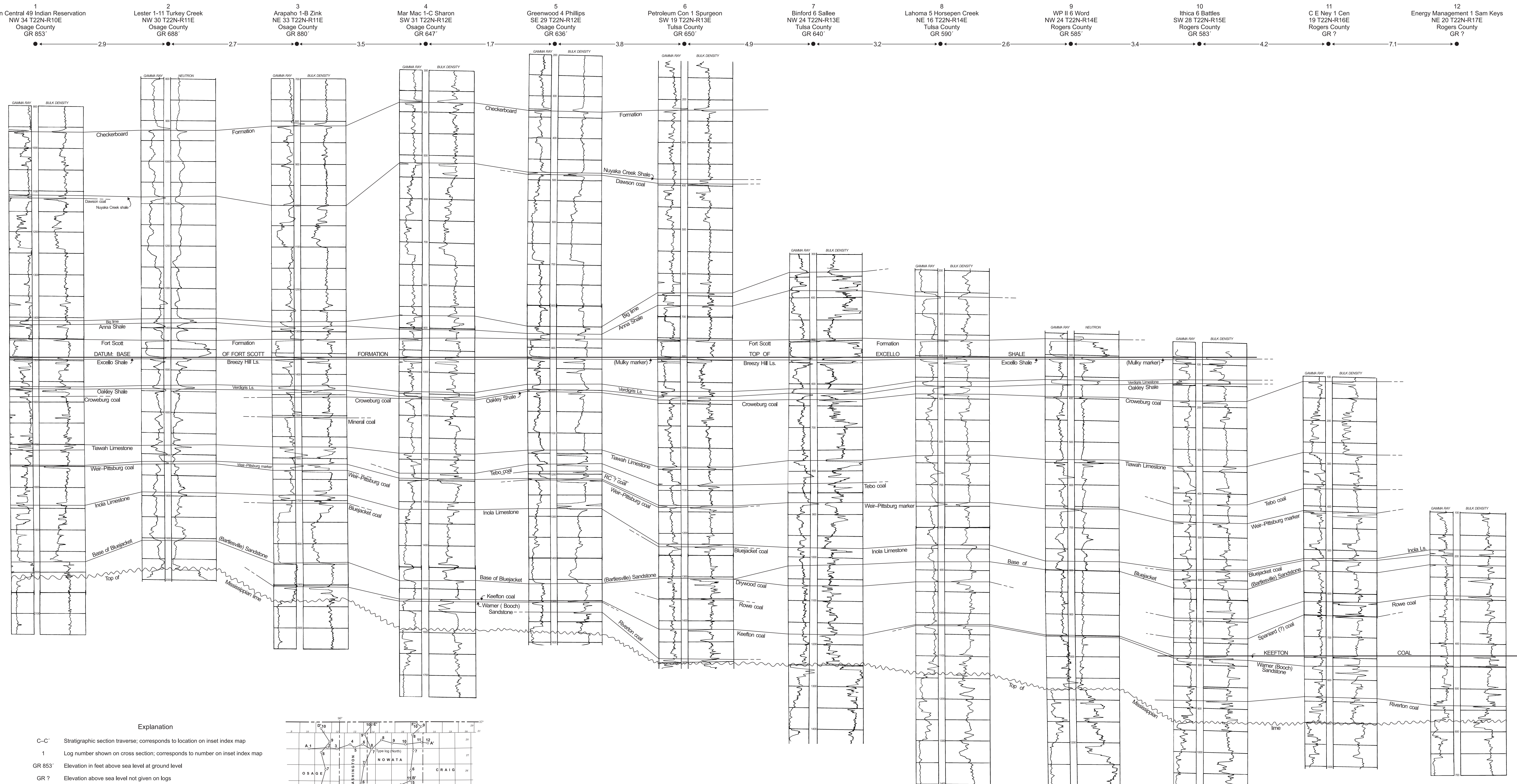


C

C'



Explanation

- C-C' Stratigraphic section traverse; corresponds to location on inset index map
- 1 Log number shown on cross section; corresponds to number on inset index map
- GR 853' Elevation in feet above sea level at ground level
- GR ? Elevation above sea level not given on logs
- Well symbol (status of well undetermined)
- ← 7.3 → Distance in miles between wells (no horizontal scale). Depth in feet below ground level shown in vertical column between log curves
- Lithologic boundary; dashed where inferred; line marks top of stratigraphic unit unless indicated otherwise
- ~~~~~ Unconformity
- Logs are modified parts of originals kept on file at the Oklahoma Geological Survey Log Library

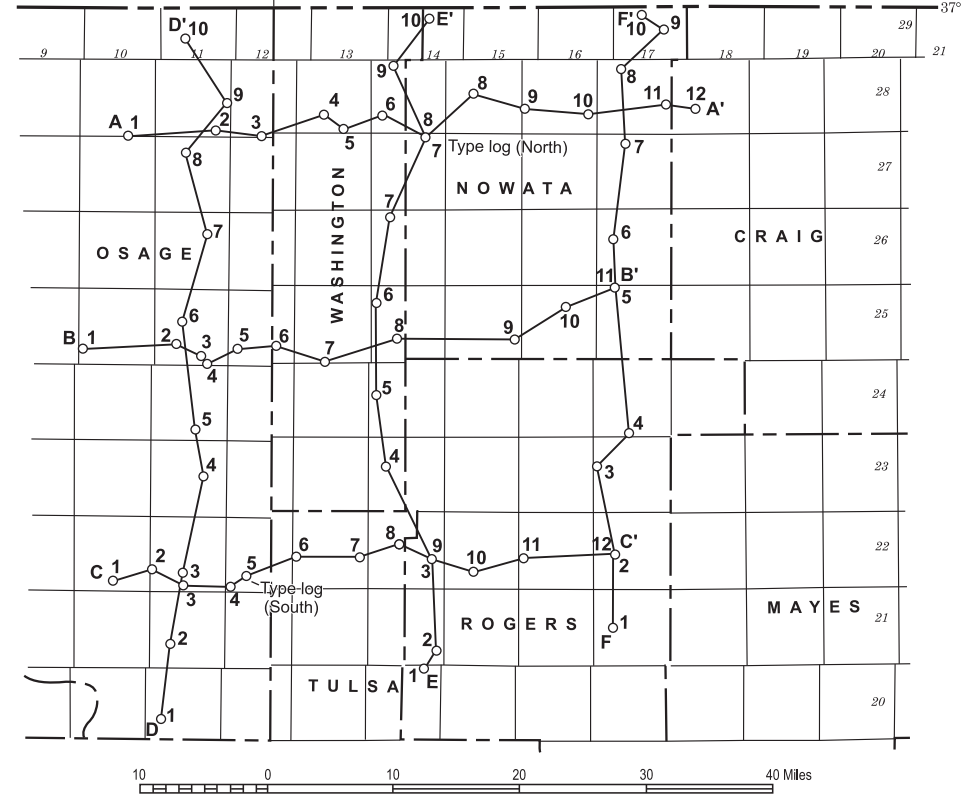


PLATE 3

**CROSS SECTION C-C' (WEST TO EAST) ACROSS
SOUTHERN PART OF NORTHEAST OKLAHOMA SHELF, SHOWING
PENNSYLVANIAN STRATIGRAPHIC CORRELATIONS**

By
LeRoy A. Hemish
2002