

Note: Estimated points in blue followed by E. These points are where logs were shielded from Base of Marlow by surface casing but they came close so the nearest log with log readings to Base of Marlow is used for thickness of zones not seen, to extrapolate an estimated depth. Points marked with X are water wells used in area where Blaine is aquifer because of near surface and lack of any other points for control.

OCC BTW MAP
Woodward County, OK

Oklahoma Corporation Commission
Base of the Treatable Water (datum)
circa November, 2000

by:
Dennis Niskern

Oklahoma Geological Survey
Open-File Report 45-2004

This map, prepared by the staff of the Oklahoma Corporation Commission, is being distributed by the Oklahoma Geological Survey as a service to the public.

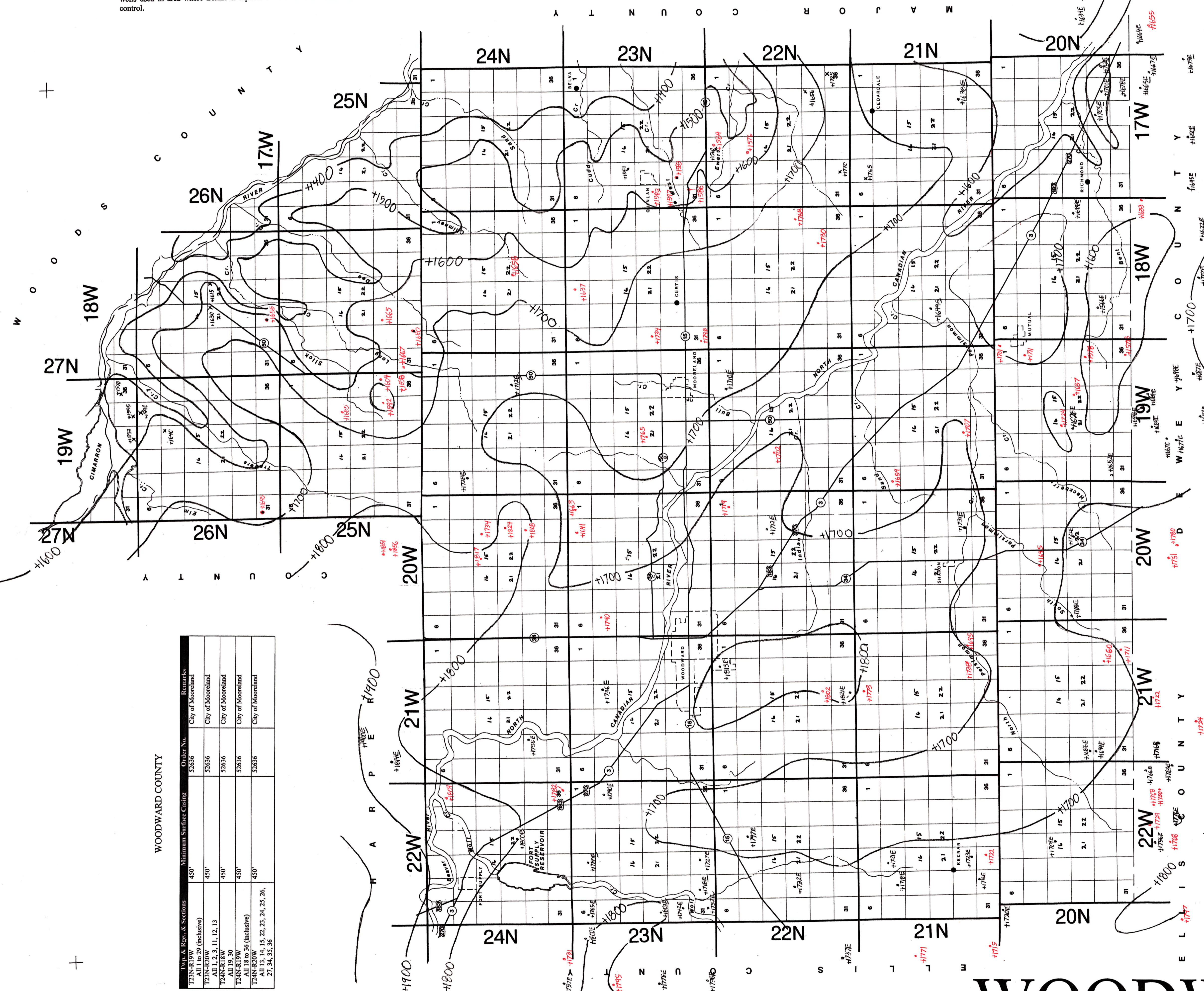
For official, updated information please contact:

OKLAHOMA WATER

STATE OF OKLAHOMA
CORPORATION COMMISSION
Oil & Gas Conservation Division
DENNIS NISKERN
Geologist
JIM THORPE BUILDING
PO BOX 52000
OKLAHOMA CITY, OK 73152-2000
OFFICE (405) 522-2977
FAX (405) 522-4452
E-MAIL: d.niskern@occcmail.com

How to Use Map
All points above sea level
Therefore, **subtract** from
Elevation for BTW depth

WOODWARD COUNTY
Base of Treatable Water
(Subsea)
C.I. = 100'
Prepared 11-2000
D.K. Niskern



WOODWARD COUNTY

Twp. & Range & Sections	Minimum Surface Casing	Order No.	Remarks
T23N-R19W All 1 to 29 (inclusive)	450'	52636	City of Mooreland
T23N-R20W All 1, 2, 3, 11, 12, 13	450'	52636	City of Mooreland
T24N-R18W All 19, 30	450'	52636	City of Mooreland
T24N-R19W All 18 to 36 (inclusive)	450'	52636	City of Mooreland
T24N-R20W 27, 34, 35, 36	450'	52636	City of Mooreland

WOODWARD