

OCC BTW MAP
Seminole County, OK

Oklahoma Corporation Commission
Base of the Treatable Water (datum)
circa November, 1998

by:
Dennis Niskern

Oklahoma Geological Survey
Open-File Report 39-2004

This map, prepared by the staff of the Oklahoma Corporation Commission, is being distributed by the Oklahoma Geological Survey as a service to the public.

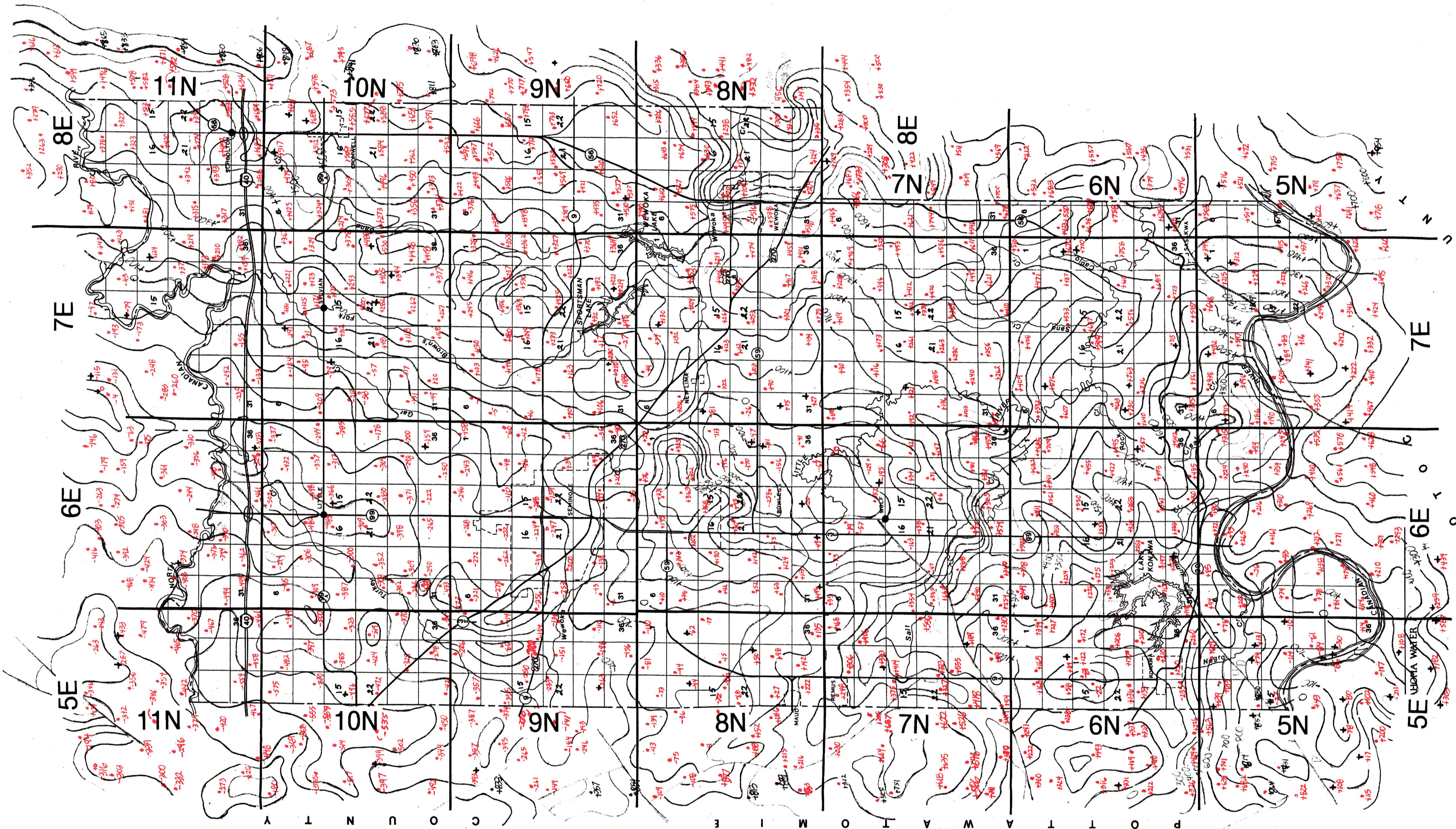
For official, updated information please contact:

STATE OF OKLAHOMA
CORPORATION COMMISSION
Oil & Gas Conservation Division



DENNIS NISKERN
Geologist

JIM THORPE BUILDING
PO BOX 52000
OKLAHOMA CITY, OK 73152-2000
OFFICE (405) 522-2977
FAX (405) 522-4452
E-MAIL: d.niskern@occcmail.com



SEMINOLE COUNTY

Twp. & Rge. & Sections	Minimum Surface Casing	Order No.	Remarks
T8N-R6E All 2, 3, 4, 5	Surface casing 50' below base Vamoosa	60107	City of Seminole, Vamoosa Formation and Watershed of Sportsman Lake
T8N-R7E NW 2, N/2 3	Same as above	60107	Same as above
T9N-R5E S/2 13, S/2 24	See T8N-R6E	60107	See T8N-R6E
T9N-R6E All of township	See T8N-R6E	60107	See T8N-R6E
T9N-R7E All 4 thru 9, W/2 10, W/2 15, 16 thru 22, SW 23, W/2 26, 27 thru 34, W/2 35	See T8N-R6E	60107	See T8N-R6E
T10N-R6E All 31 thru 36	See T8N-R6E	60107	See T8N-R6E
T10N-R7E All 25, 26, 35, 36	100'	10943	Droppleman Pool
All 31, 32, 33	See T8N-R6E	60107	See T8N-R6E
T11N-R8E (part in Okfuskee) All 3, N/2 10	100'	13711	North Bethel Pool

How to Use Map

- +500
- +400 above sea level
- +300 (subtract from elevation for BTW)
- +200
- +100
- 0 - sea level
- 100
- 200 below sea level
- 300 (add to elevation for BTW)
- 400
- 500

SEMINOLE COUNTY

Base of Treatable Water
(Subsea)
C.I. = 100'
Prepared 11-98
D.K. Niskern

SEMINOLE