

Note: Casing #s in Blue - Bigger above sea level subsea casing #s to surrounding data points must be honored vice versa smaller above sea level subsea casing #s to surrounding data points do not have to be honored. All casing point #s have 50 feet added to them.

Water well data points denoted with ww and are total depth as reported used only when well control lacking.

OCC BTW MAP
Rogers County, OK

Oklahoma Corporation Commission
Base of the Treatable Water (datum)
circa August, 2000

by:
Dennis Niskern

Oklahoma Geological Survey
Open-File Report 38-2004

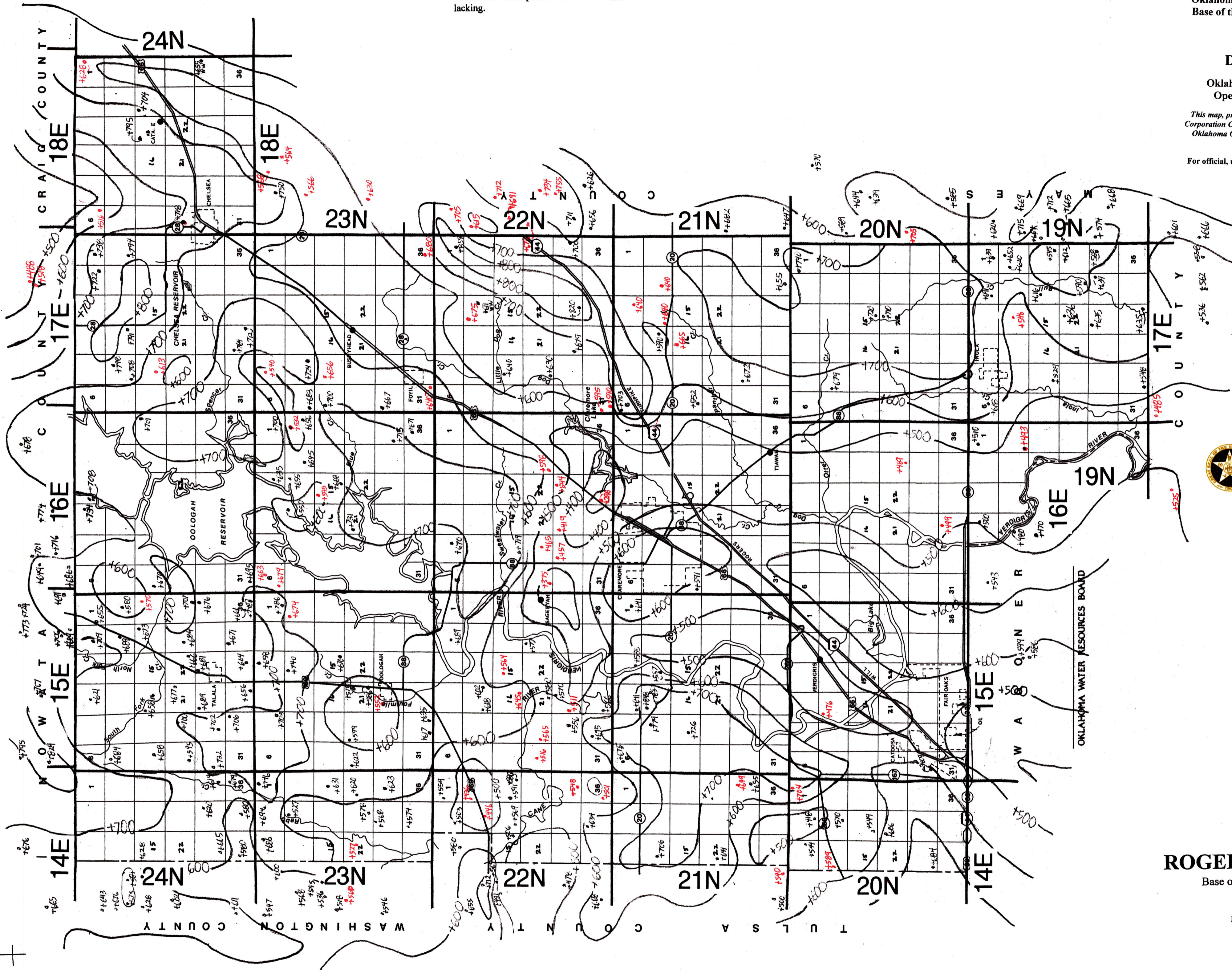
This map, prepared by the staff of the Oklahoma Corporation Commission, is being distributed by the Oklahoma Geological Survey as a service to the public.

For official, updated information please contact:

STATE OF OKLAHOMA
CORPORATION COMMISSION
Oil & Gas Conservation Division



DENNIS NISKERN
Geologist
JIM THORPE BUILDING
PO BOX 52000
OKLAHOMA CITY, OK 73152-2000
OFFICE: (405) 522-2977
FAX: (405) 522-4452
E-MAIL: d.niskern@occcmail.com



ROGERS COUNTY

Base of Treatable Water
(Subsea)
C.I. = 100'
Prepared 8-2000
D.K. Niskern

How to Use Map
All points above sea level
Therefore, subtract from
Elevation for BTW depth

ROGERS