

PAYNE COUNTY

Twp. & Rge. & Sections	Minimum Surface Casing	Order No.	Remarks
T17N-R4E 1 thru 5, 8 thru 16	200' See 0-24266 for diagram of area parts of these sections only	24266	City of Cushing
T17N-R5E 5 thru 8, 17 thru 18	200' See 0-24266 for diagram of area parts of these sections only	24266	City of Cushing
All 1 thru 18	750' D.V. permitted or 50' below fresh water	73697 amended by 94594	City of Cushing
T17N-R6E All 1 thru 3, 10 thru 15	125' above sea level	70256	City of Drumright
All 1 thru 11, 14 thru 18	750' D.V. permitted or 50' below fresh water	73697 amended by 94594	City of Cushing
T18N-R1E All 1, E/2 2, NE 11, All 12, 13, E/2 24, E/2 25	900'	12179	Ramsey Pool
T18N-R2E W/2 5, All 6, 7, W/2 8, W/2 17, All 18, 19, W/2 20, NW 29, All 30	900'	12179	Ramsey Pool
T18N-R4E 26 thru 29, 32 thru 36	200' See 0-24266 for diagram of area parts of these sections only	24266	City of Cushing

T18N-R5E All 7 thru 36	750' D.V. permitted or 50' below fresh water	73697 amended by 94594	City of Cushing
T18N-R6E All 7 thru 11, 14 thru 23, 26 thru 35	750' D.V. permitted or 50' below fresh water	73697 amended by 94594	City of Cushing
T19N-R1E 3 thru 10, 15 thru 22, 28 thru 32	125' above sea level	70256	City of Drumright
S/2 36	225' not less than covers drainage area Lake Carl Blackwell (see topo map)	23028 amended by 39694	Lake Carl Blackwell
T19N-R2E S/2 31	900'	12179	Ramsey Pool
T19N-R3E All 13, 24	100'	20314	Phillips Petroleum
T19N-R4E All 18, 19	100'	20314	Phillips Petroleum
T19N-R1W 1 thru 28, 35, 36	225' not less than covers drainage area Lake Carl Blackwell (see topo map)	23028 amended by 39694	Lake Carl Blackwell

OCC BTW MAP  
Payne County, OK

Oklahoma Corporation Commission  
Base of the Treatable Water (datum)  
circa May, 2003

by:  
**Dennis Niskern**

Oklahoma Geological Survey  
Open-File Report 33-2004

This map, prepared by the staff of the Oklahoma Corporation Commission, is being distributed by the Oklahoma Geological Survey as a service to the public.

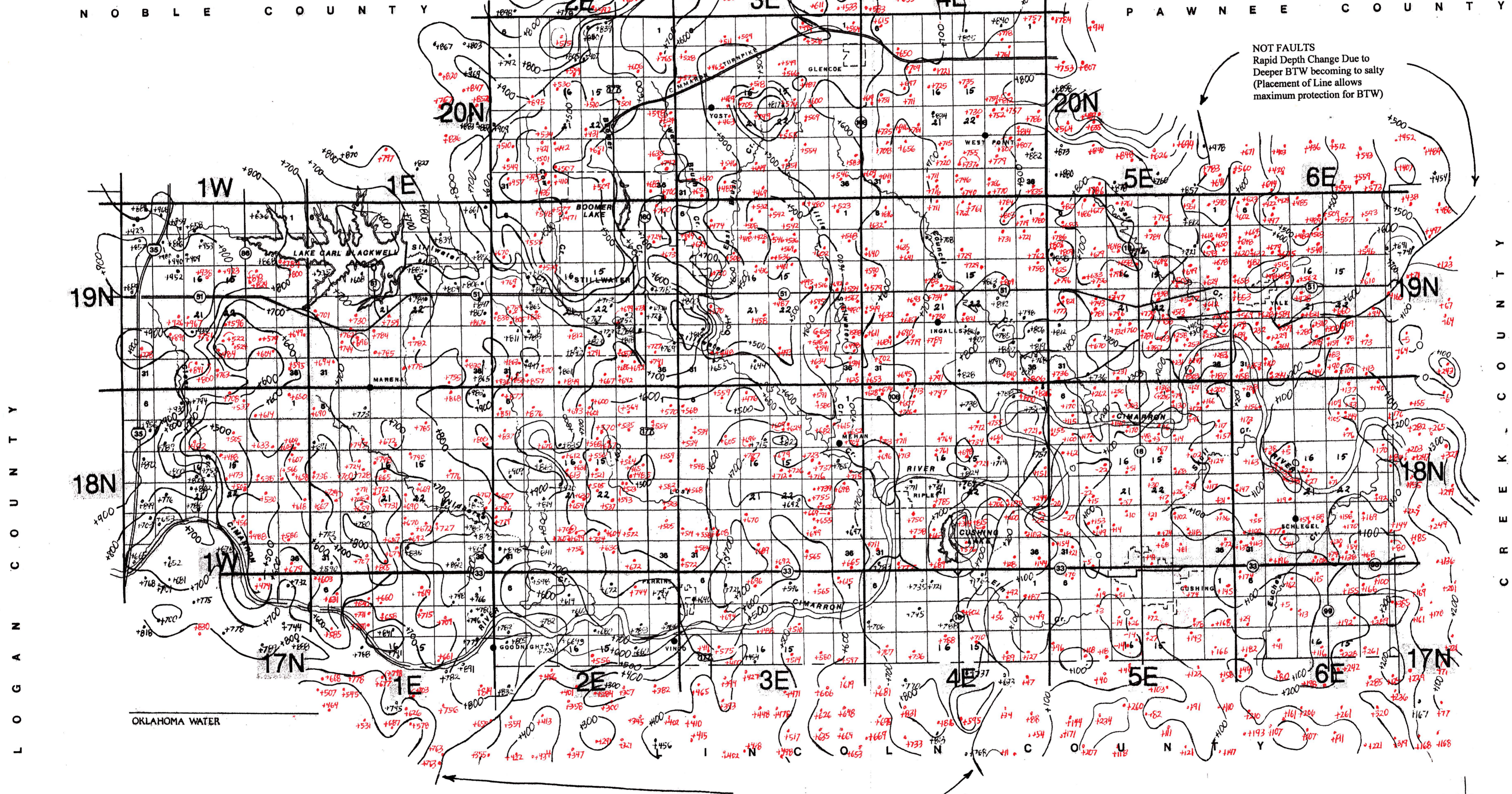
For official, updated information please contact:



STATE OF OKLAHOMA  
CORPORATION COMMISSION  
Oil & Gas Conservation Division

DENNIS NISKERN  
Geologist

JIM THORPE BUILDING  
PO BOX 52000  
OKLAHOMA CITY, OK 73152-2000  
OFFICE (405) 522-2977  
FAX (405) 522-4452  
E-MAIL: d.niskern@occcmail.com



Note: Casing #s in BLUE - bigger above sea level casing #s to surrounding data points must be honored vice versa smaller above sea level subsea casing #s to surrounding data points do not have to be honored. All casing point #s have 50 feet added to them.

NOT FAULTS  
Rapid Depth Change Due to Deeper BTW becoming to salty  
(Placement of Line allows maximum protection for BTW)

- How to Use Map**
- +600
  - +500
  - +400 above sea level
  - +300 (subtract from elevation for BTW)
  - +200
  - +100
  - 0 - sea level
  - 100
  - 200 below sea level
  - 300 (add to elevation for BTW)

**PAYNE COUNTY**  
Base of Treatable Water  
(Subsea)  
C.I. = 100'  
Prepared 05-2003  
D.K. Niskern