

OCC BTW MAP
McIntosh County, OK

Oklahoma Corporation Commission
Base of the Treatable Water (datum)
circa July, 2002

by:
Dennis Niskern

Oklahoma Geological Survey
Open-File Report 28-2004

This map, prepared by the staff of the Oklahoma Corporation Commission, is being distributed by the Oklahoma Geological Survey as a service to the public.

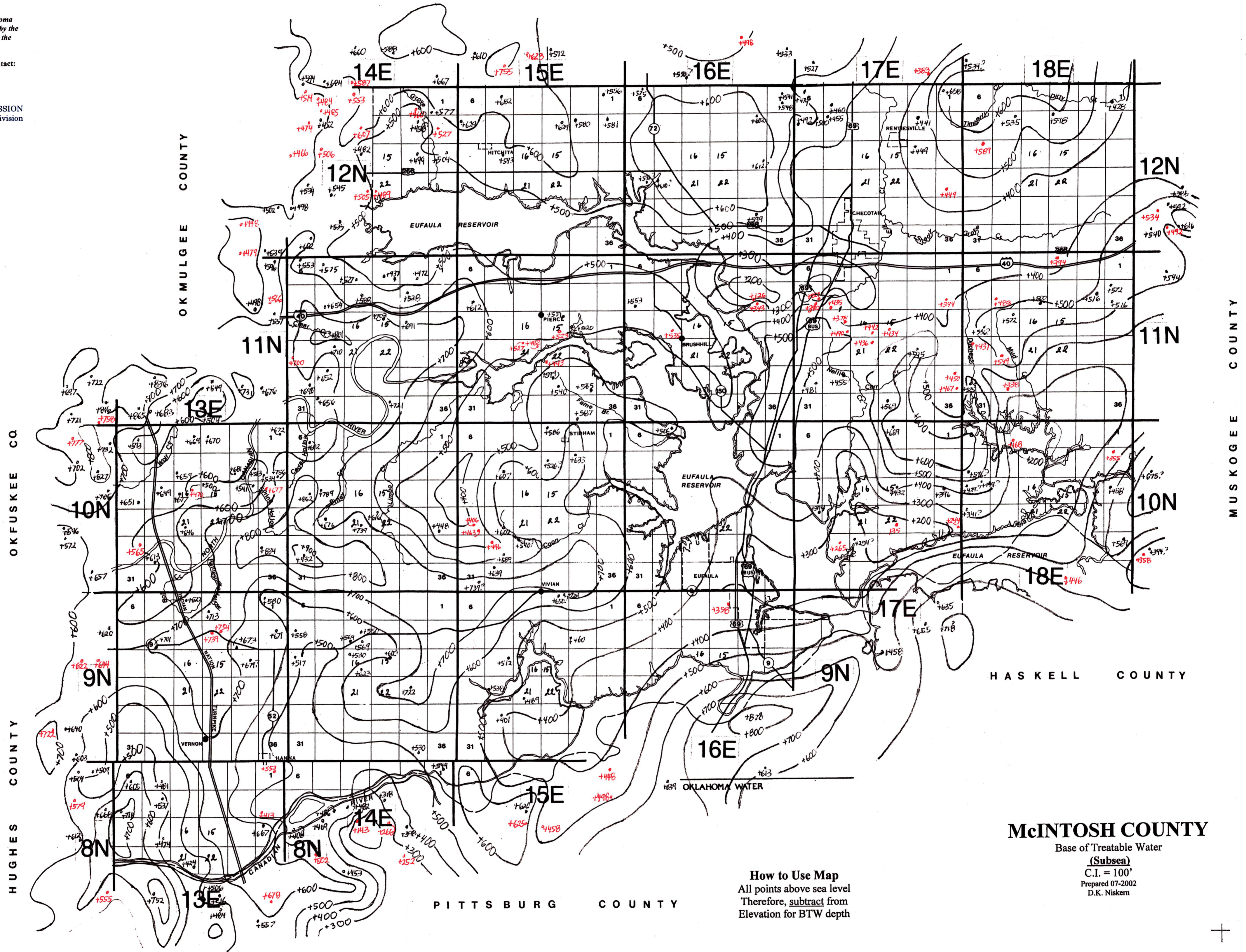
For official, updated information please contact:

STATE OF OKLAHOMA
CORPORATION COMMISSION
Oil & Gas Conservation Division
DENNIS NISKERN
Geologist



JIM THORPE BUILDING
PO BOX 52000
OKLAHOMA CITY, OK 73152-2000
OFFICE: (405) 522-2977
FAX: (405) 522-1452
E-MAIL: d.niskern@occcmail.com

MUSKOGEE COUNTY



McINTOSH COUNTY
Base of Treatable Water
(Subsea)
C.I. = 100'
Prepared 07-2002
D.K. Niskern

How to Use Map
All points above sea level
Therefore, **subtract** from
Elevation for BTW depth

Note: Casing #s in BLUE - bigger above sea level casing #s to surrounding data points must be honored vice versa smaller above sea level subsea casing #s to surrounding data points do not have to be honored. All casing point #s have 50 feet added to them.

MC INTOSH