

Note: Casing #s in BLUE – bigger above sea level casing #s to surrounding data points must be honored vice versa smaller above sea level subsea casing #s to surrounding data points do not have to be honored. All casing point #s have 50 feet added to them.

OCC BTW MAP
Kingfisher County, OK

Oklahoma Corporation Commission
Base of the Treatable Water (datum)
circa February, 2002

by:
Dennis Niskern

Oklahoma Geological Survey
Open-File Report 23-2004

This map, prepared by the staff of the Oklahoma Corporation Commission, is being distributed by the Oklahoma Geological Survey as a service to the public.

For official, updated information please contact:

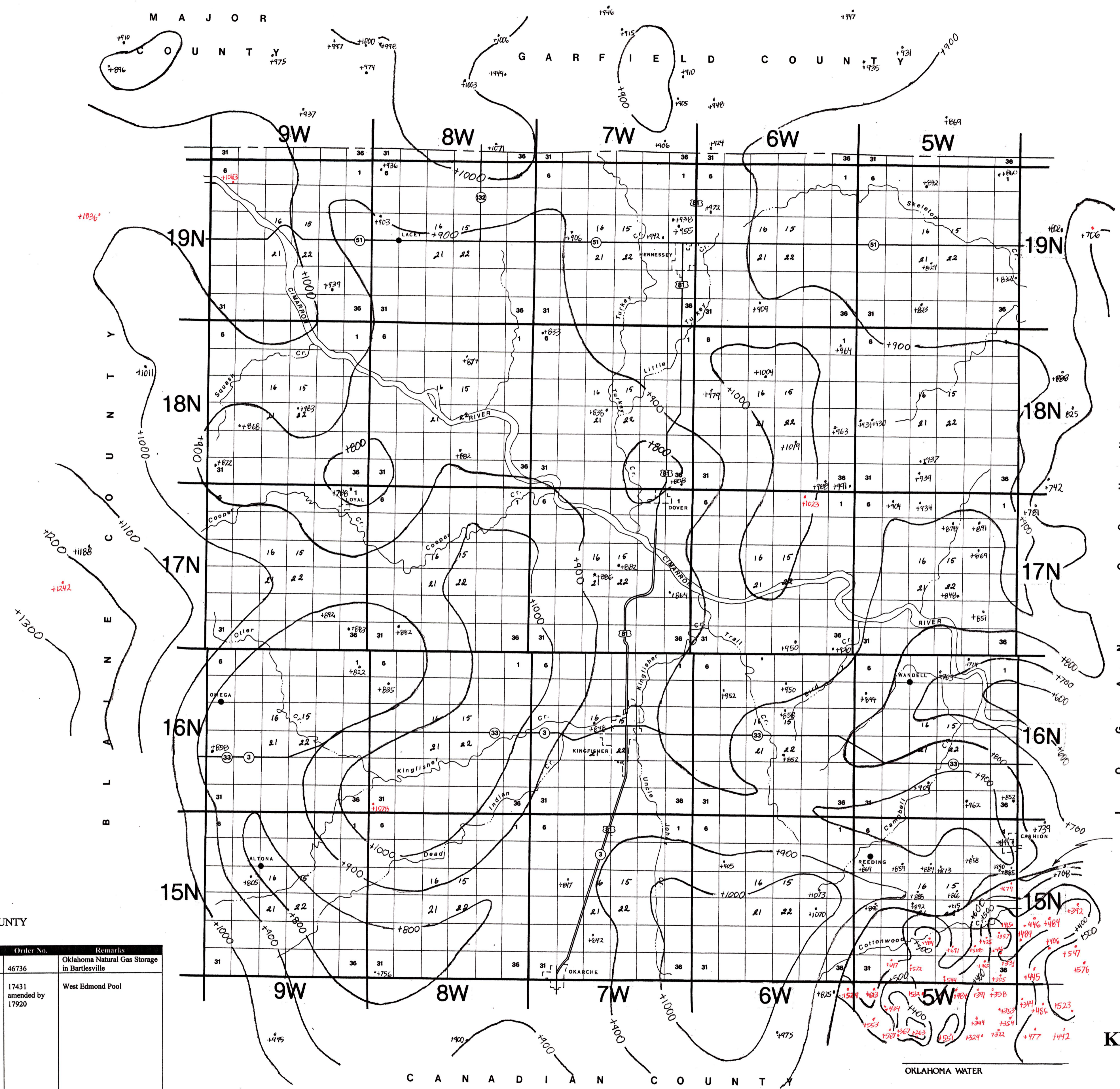
STATE OF OKLAHOMA
CORPORATION COMMISSION
Oil & Gas Conservation Division
DENNIS NISKERN
Geologist



JIM THORPE BUILDING
PO BOX 52000
OKLAHOMA CITY, OK 73152-2000
OFFICE (405) 522-2977
FAX (405) 522-4452
E-MAIL: d.niskern@occcmail.com

KINGFISHER COUNTY

Twp. & Rce. & Sections	Minimum Surface Casing	Order No.	Remarks
T15N-R5W S/2 S/2 24, All 25, 26, 27	None Required by Order	46736	Oklahoma Natural Gas Storage in Bartlesville
T15N-R5W NW SE, SE SE, NE SW, NW NW, SE NW 11, SE, SE SW 12, NE, S/2 SE, W/2 13, N/2 NE, SE, NE SW, NE NW 14, NW NE, SE NE, NE SE, NE NW 23, W/2 NE, SE, E/2 SW, E/2 NW, NW NW 24, E/2, E/2 SW, NW SW, E/2 NW, SW NW 25, NE, N/2 SE, N/2 SW, E/2 NW, SW NW 26, S/2 NE, N/2 SE, NE SW, SW SE, SW NW 27, S/2 NE, NE NW 28, W/2 NE 35, E/2, SW, E/2 NW 36	300'	17431 amended by 17920	West Edmond Pool
T17N-R6W All 6, 7, 18	300'	23720 amended by 41036 & 42410	City of Kingfisher water supply
T17N-R7W All 1, 2, 3, 4, 11, 12, 13, All of Sections 5, 6, 10 North of Cimarron River	300'	23720 amended by 41036 & 42410	City of Kingfisher water supply
T18N-R6W All 30, 31	300'	23720 amended by 41036 & 42410	City of Kingfisher water supply
T18N-R7W All 19, 20, 21, 22, 25, 26, 27, 28, 29, 30, 31, 32, 33, 34, 35, 36	300'	23720 amended by 41036 & 42410	City of Kingfisher water supply



NOT A FAULT
Rapid Depth Change Due to Deeper BTW becoming to salty (Placement of Line allows maximum protection for BTW)

How to Use Map
All points above sea level
Therefore, subtract from
Elevation for BTW depth

KINGFISHER COUNTY
Base of Treatable Water
(Subsea)
C.I. = 100'
Prepared 02-2002
D.K. Niskern

KINGFISHER