

Trp. & Reg. & Sections	Minimum Surface Casing	Order No.	Remarks
T5N-R10E SW 4; SE 5; E/2 7; all 8 (except SE SE); NW, NW SW 9; NW NE, W/2 17; E/2 18; NE 19; NW 20	480'	12823	Calvin Pool For Viola Penetration
T5N-R11E SE SW, SE, SE NE 23, S/2 NW, SW 24, N/2 NW, SW NW, N/2 SE NW 25, all 26, SE NE, SE 27, NE 34, NW NW 35	None per order	379066/ 379235	Central Oklahoma Oil Gas Storage in Hartshorne 3300'
T7N-R10E All 2, 3, 4, 5, 8, 9, 10, 11 N/2 N/2 1, NE NE 2	300'	29729	Greasy Creek Springs Gas Storage in Channel Booch 2490'
T8N-R10E E/2 SE, SE NE 35, S/2 NE, S/2 S/2 NW 36	None per order	95952/96291	Greasy Creek Springs Gas Storage in Channel Booch 2490'
T8N-R11E S/2 SW/ SE, SE SE 20, S/2 NE, SE NW 21, W/2 W/2 22, W/2 NW 27, N/2 NW SE, N/2 SW, N/2 S/2 SW 28, S/2 NE, S/2 NW, NE NW29, S/2 SW, SE 30, SW, N/2 N/2 SE, N/2 31, N/2 NW, N/2 S/2 NW, N/2 N/2 NE 32	None per order	95952/96291	Greasy Creek Springs Gas Storage in Channel Booch 2490'
T9N-R12E All 13, 14, N/2 23, N/2 24	95'	22813	

OCC BTW MAP
Hughes County, OK

Oklahoma Corporation Commission
Base of the Treatable Water (datum)
circa March, 1999

by:
Dennis Niskern

Oklahoma Geological Survey
Open-File Report 22-2004

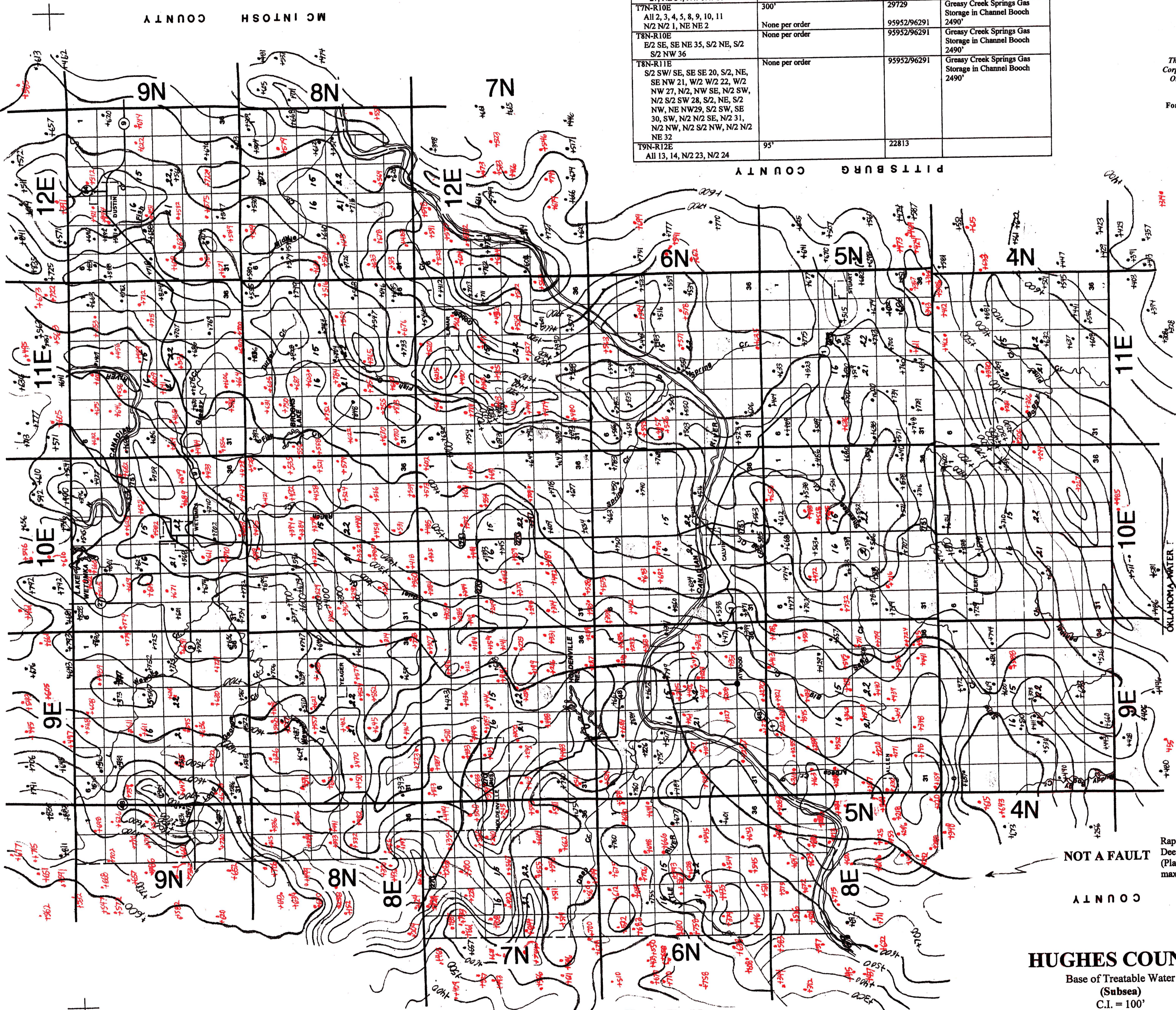
This map, prepared by the staff of the Oklahoma Corporation Commission, is being distributed by the Oklahoma Geological Survey as a service to the public.

For official, updated information please contact:

STATE OF OKLAHOMA
CORPORATION COMMISSION
Oil & Gas Conservation Division

 DENNIS NISKERN
Geologist

JIM THORPE BUILDING
PO BOX 83000
OKLAHOMA CITY, OK 73152-2000
OFFICE (405) 522-2977
FAX (405) 522-4452
E-MAIL: d.niskern@occcmail.com



Note Casing #s in BLUE - Bigger above sea level subsea casing #s to surrounding data points must be honored vice versa
Smaller above sea level subsea casing #s to surrounding data points do not have to be honored.
All casing point #s have 50 feet added to them.

How to Use Map
+600
+500
+400 above sea level
+300 (subtract from elevation for BTW)
+200
+100
0 - sea level
-100
-200 below sea level
-300 (add to elevation for BTW)

HUGHES COUNTY
Base of Treatable Water
(Subsea)
C.I. = 100'
Prepared 3-99
D.K. Niskern

HUGHES