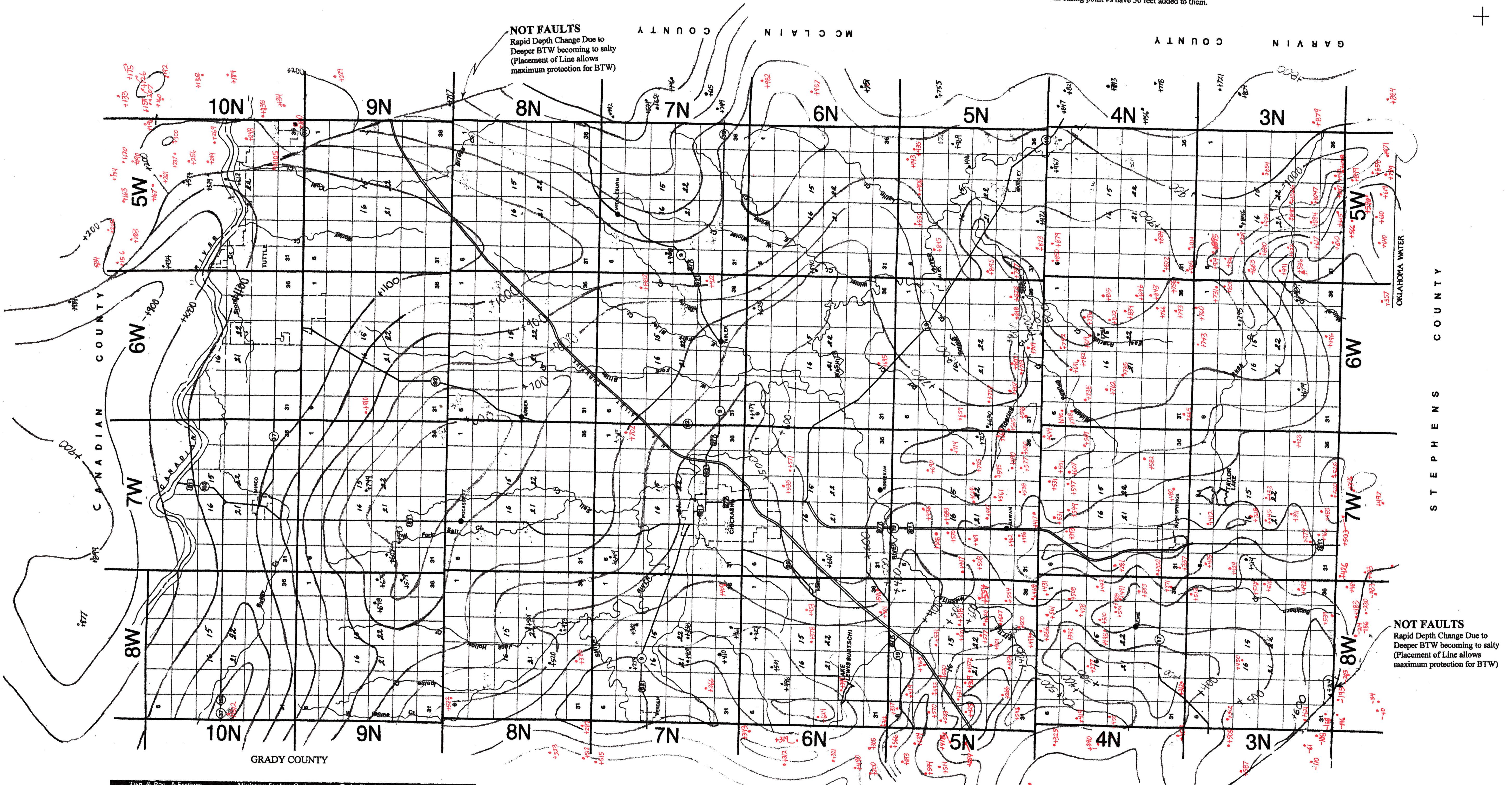


Note Casing #s in BLUE - Bigger above sea level subsea casing #s to surrounding data points must be honored vice versa
 Smaller above sea level subsea casing #s to surrounding data points do not have to be honored.
 All casing point #s have 50 feet added to them.



NOT FAULTS
 Rapid Depth Change Due to Deeper BTW becoming to salty
 (Placement of Line allows maximum protection for BTW)

NOT FAULTS
 Rapid Depth Change Due to Deeper BTW becoming to salty
 (Placement of Line allows maximum protection for BTW)

Twp. & Rge., & Sections	Minimum Surface Casing	Order No.	Remarks
T4N-R5W W/2 1, all 2, E/2 3 E/2 1, all 11, 12, 13, 14, E/2 15, NE 22, N/2 23, N/2 24, 4, 9, 10 W/2 3	1000' 300'	29201 31521	
T4N-R7W All of township	500' minimum	15206	
T4N-R8W All of township	500' minimum (exception see order 28691 below)	15206	
T4N-R8W All of township	250' minimum in wells less than 3500' deep	28691	
T5N-R5W SW 25, S/2 26, SE 27, E/2 34, 35, W/2 36 SE 25, N/2 26, NE 27, W/2 34, E/2 36	1000' 300'	29201 31521	
T5N-R7W All of township	500' minimum	15206	
T5N-R8W All of township	500' minimum (exception see order 28691 below)	15206	
T5N-R8W All of township	250' minimum in wells less than 3500' deep	28691	

C A D D O C O U N T Y

OCC BTW MAP
 Grady County, OK

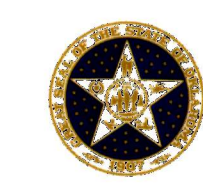
Oklahoma Corporation Commission
 Base of the Treatable Water (datum)
 circa July, 1999

by:
Dennis Niskern

Oklahoma Geological Survey
 Open-File Report 20-2004

This map, prepared by the staff of the Oklahoma Corporation Commission, is being distributed by the Oklahoma Geological Survey as a service to the public.

For official, updated information please contact:



STATE OF OKLAHOMA
 CORPORATION COMMISSION
 Oil & Gas Conservation Division
 DENNIS NISKERN
 Geologist
 JIM THORPE BUILDING
 PO BOX 82000
 OKLAHOMA CITY, OK 73152-2000
 OFFICE (405) 522-2977
 FAX (405) 522-4452
 E-MAIL d.niskern@occcmail.com

C O M A N C H E C O U N T Y

GRADY COUNTY

Base of Treatable Water
 (Subsea)

C.I. = 100'
 Prepared 7-99
 D.K. Niskern

How to Use Map
 All points above sea level
 Therefore subtract from
 Elevation for BTW depth

GRADY