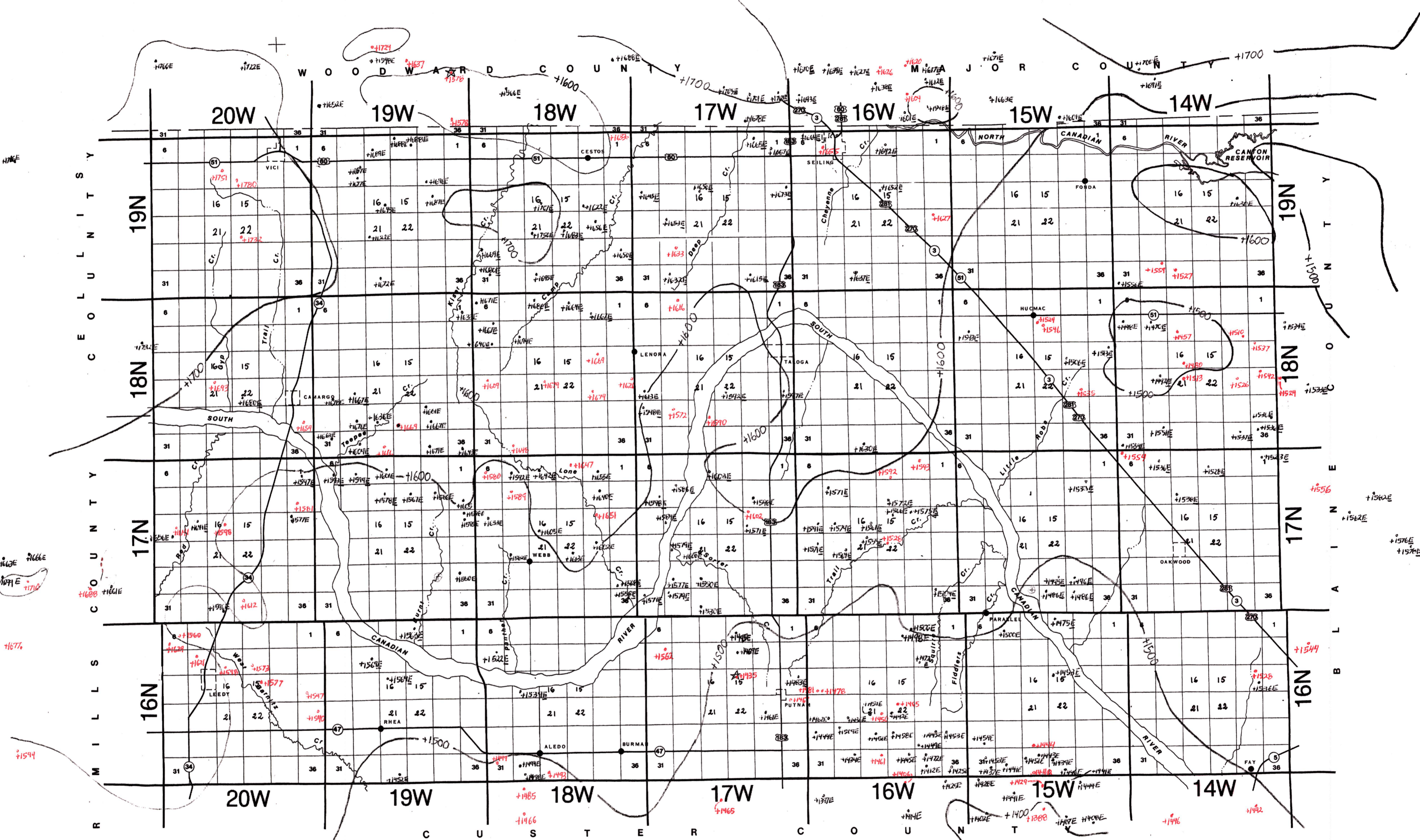


Note: Estimated points in blue followed by E. These points are where logs were shielded from Base of Marlow by surface casing but they came close so the nearest log with log readings to Base of Marlow is used for thickness of zones not seen, to extrapolate an estimated depth.

Key Logs

- LOG Sec. 15-16N-17W - Union Oil Company of California - Darrell Coit #1
Tops from Faye & Hart Oklahoma Geological Survey Bulletin 114
- LOG Sec. 24-20N-19W - Dominion Oil & Gas Corp. - Johnson #1
Neutron-Density (porosity) log up into Marlow across water aquifers Marlow and facies change in Dog Creek from siltstone to sand zone that needs surface casing protection because it too is fresh water aquifer.



DEWEY COUNTY

OCC BTW MAP
Dewey County, OK

Oklahoma Corporation Commission
Base of the Treatable Water (datum)
circa February, 2000

by:
Dennis Niskern

Oklahoma Geological Survey
Open-File Report 17-2004

This map, prepared by the staff of the Oklahoma Corporation Commission, is being distributed by the Oklahoma Geological Survey as a service to the public.

For official, updated information please contact:

How to Use Map
All points above sea level
Therefore, subtract from
Elevation for BTW depth

DEWEY COUNTY

Base of Treatable Water
(Subsea)
C.I. = 100'
Prepared 2-2000
D.K. Niskern

Twp. & Rge., & Sections	Minimum Surface Casing	Order No.	Remarks
T16N-R14W All 3- thru 36	500' or Stage Tool at depth not less than 500'	42589	City of Thomas
T16N-R15W All of township	500' or Stage Tool at depth not less than 500'	42589	City of Thomas
T16N-R16W All of township	If stage tool used, tool must be set not less than 500'	39839	Magnolia Petroleum Co.

STATE OF OKLAHOMA
CORPORATION COMMISSION
Oil & Gas Conservation Division
DENNIS NISKERN
Geologist
JIM THORPE BUILDING
PO BOX 52000
OKLAHOMA CITY, OK 73152-2000
OFFICE (405) 522-2977
FAX (405) 522-4452
E-MAIL: d.niskern@occcmail.com

DEWEY