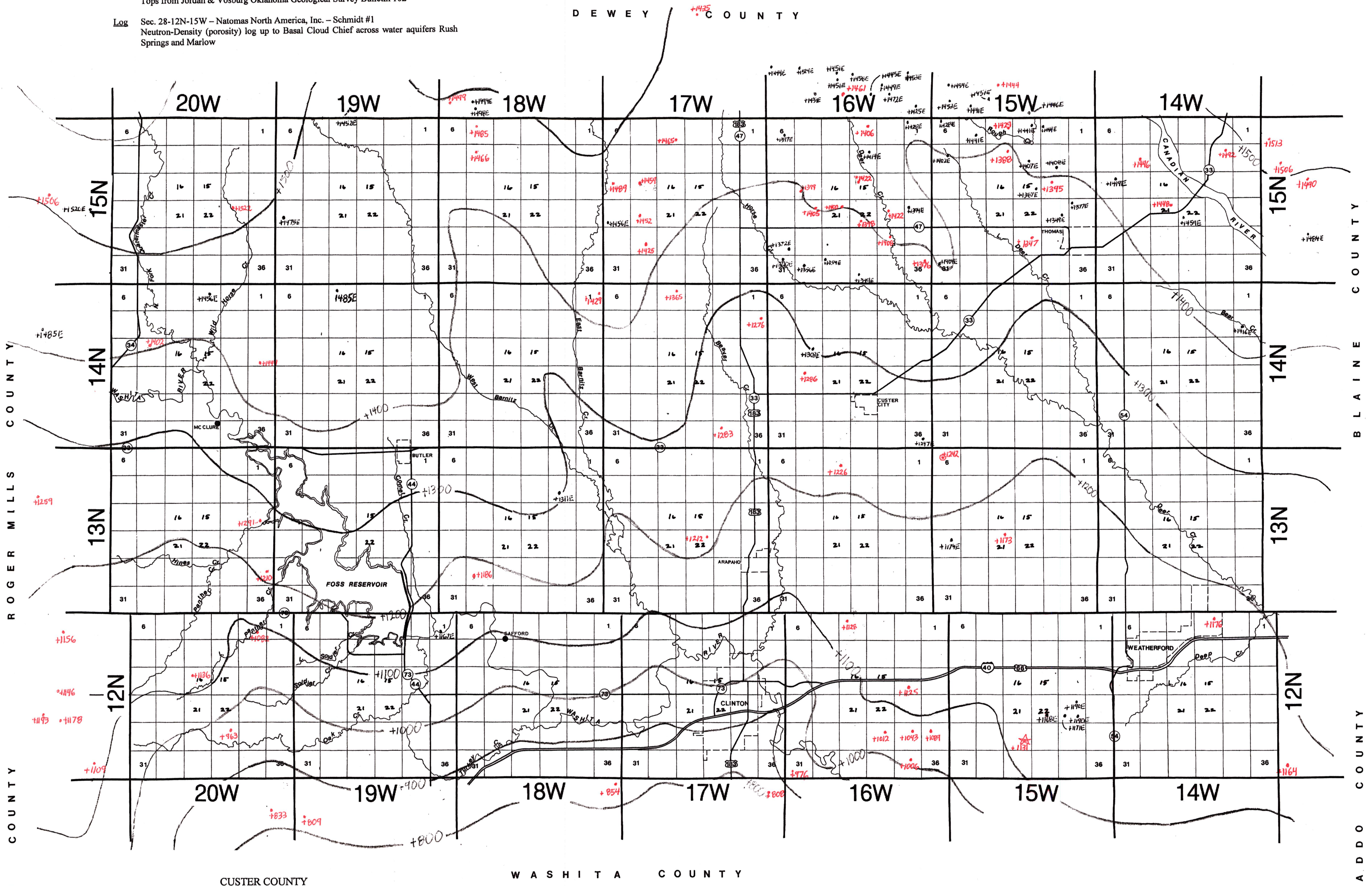


Note: Estimated points in black followed by E. These points are where logs were shielded from Base of Marlow by surface casing but they came close so the nearest log with log readings to Base of Marlow is used for thickness of zones not seen, to extrapolate an estimated depth.

Key Logs

Log Sec. 6-13N-15W - Gulf Oil Corp. - Burgdorf #1
Tops from Jordan & Vosburg Oklahoma Geological Survey Bulletin 102

Log Sec. 28-12N-15W - Natomas North America, Inc. - Schmidt #1
Neutron-Density (porosity) log up to Basal Cloud Chief across water aquifers Rush Springs and Marlow



Twp. & Rge. & Sections	Minimum Surface Casing	Order No.	Remarks
T13N-R14W All 1 thru 20	500' or Stage tool at depth not less than 500'	42589	City of Thomas
T13N-R15W All 1 thru 24	500' or Stage tool at depth not less than 500'	42589	City of Thomas
T13N-R16W All 1, 2, 12	500' or Stage tool at depth not less than 500'	42589	City of Thomas
T14N-R14W All of township	500' or Stage tool at depth not less than 500'	42589	City of Thomas
T14N-R15W All of township	500' or Stage tool at depth not less than 500'	42589	City of Thomas
T14N-R16W All of township	500' or Stage tool at depth not less than 500'	42589	City of Thomas
T15N-R14W All of township	500' or Stage tool at depth not less than 500'	42589	City of Thomas
T15N-R15W All of township	500' or Stage tool at depth not less than 500'	42589	City of Thomas
T15N-R16W All of township	500' or Stage tool at depth not less than 500'	42589	City of Thomas
T15N-R16W All of township	Stage tool required not less than 500'	39839	

OCC BTW MAP
Custer County, OK

Oklahoma Corporation Commission
Base of the Treatable Water (datum)
circa May, 1999

by:
Dennis Niskern

Oklahoma Geological Survey
Open-File Report 16-2004

This map, prepared by the staff of the Oklahoma Corporation Commission, is being distributed by the Oklahoma Geological Survey as a service to the public.

For official, updated information please contact:

How to Use Map
All points above sea level
Therefore, subtract from
Elevation for BTW depth

CUSTER COUNTY
Base of Treatable Water
(AKA Base Marlow and Base Whitehorse Group)
(Subsea)
C.I. = 100'
Prepared 5-99
D.K. Niskern



STATE OF OKLAHOMA
CORPORATION COMMISSION
Oil & Gas Conservation Division

DENNIS NISKERN
Geologist

JIM THORPE BUILDING
PO BOX 52000
OKLAHOMA CITY, OK 73152-2000
OFFICE (405) 522-2977
FAX (405) 522-4452
E-MAIL d.niskern@occcmail.com

CUSTER