

OCC BTW MAP
Canadian County, OK

Oklahoma Corporation Commission
Base of the Treatable Water (datum)
circa February, 2002

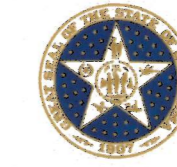
by:
Dennis Niskern

Top. & Reg. & Sections	Minimum Surface Casing	Order No.	Remarks
T10N-R5W All 1, 12	850'	44650	Short Junction Pool
T11N-R5W S/2 13, SE 14, E/2 23, All 24, 25, E/2 26, E/2 35, All 36	850'	44650	Short Junction Pool
T14N-R5W E/2, NW, E/2 SW 1, NE 2, SE NE, SW SE 10, SE SE, SE SW, NW SW 11, E/2, SW, SE NW 12, E/2 NE, NW NE, E/2 SE 13, NW NE, SE NE, NE SE, S/2 NW 14, NE NE, SE 15, E/2 E/2 24, E/2 E/2, SW SE, SE SW 25, SE SW, SW SE 26, E/2 NE, NW SE, NE SW, SW SW 35, N/2 36	300'	17431 amended by 17920	West Edmond Pool

Oklahoma Geological Survey
Open-File Report 13-2004

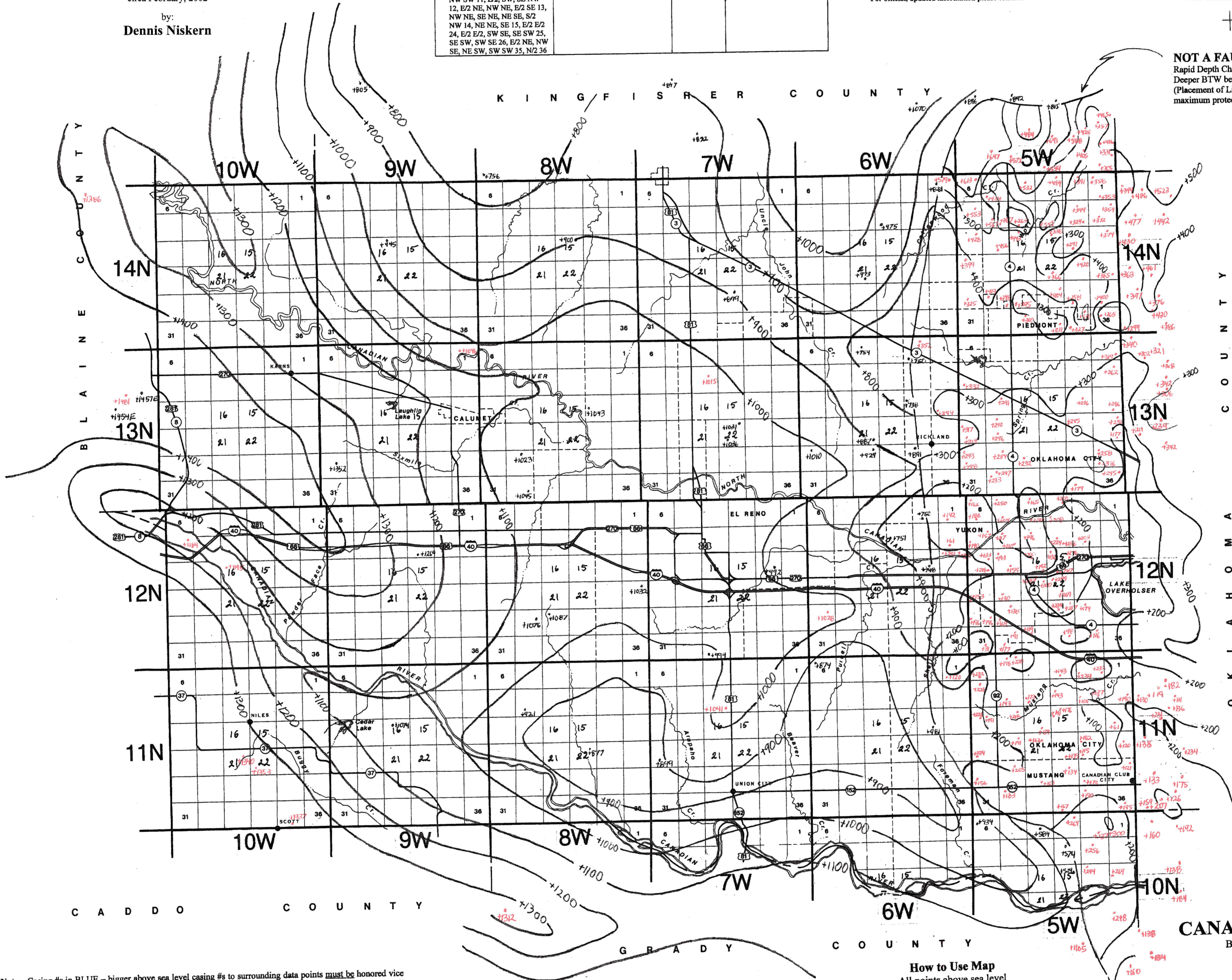
This map, prepared by the staff of the Oklahoma
Corporation Commission, is being distributed by the
Oklahoma Geological Survey as a service to the
public.

For official, updated information please contact:



STATE OF OKLAHOMA
CORPORATION COMMISSION
Oil & Gas Conservation Division
DENNIS NISKERN
Geologist
JIM THORPE BUILDING
PO BOX 52000
OKLAHOMA CITY, OK 73152-2000
OFFICE (405) 522-2977
FAX (405) 522-4482
E-MAIL: d.niskern@occomail.com

NOT A FAULT
Rapid Depth Change Due to
Deeper BTW becoming to salty
(Placement of Line allows
maximum protection for BTW)



Note: Casing #s in BLUE - bigger above sea level casing #s to surrounding data points must be honored vice smaller above sea level subsea casing #s to surrounding data points do not have to be honored. All casing point #s have 50 feet added to them.

OKLAHOMA WATER

How to Use Map
All points above sea level
Therefore, subtract from
Elevation for BTW depth

CANADIAN COUNTY
Base of Treatable Water
(Subsea)
C.I. = 100'
Prepared 02-2002
D.K. Niskern

CANADIAN