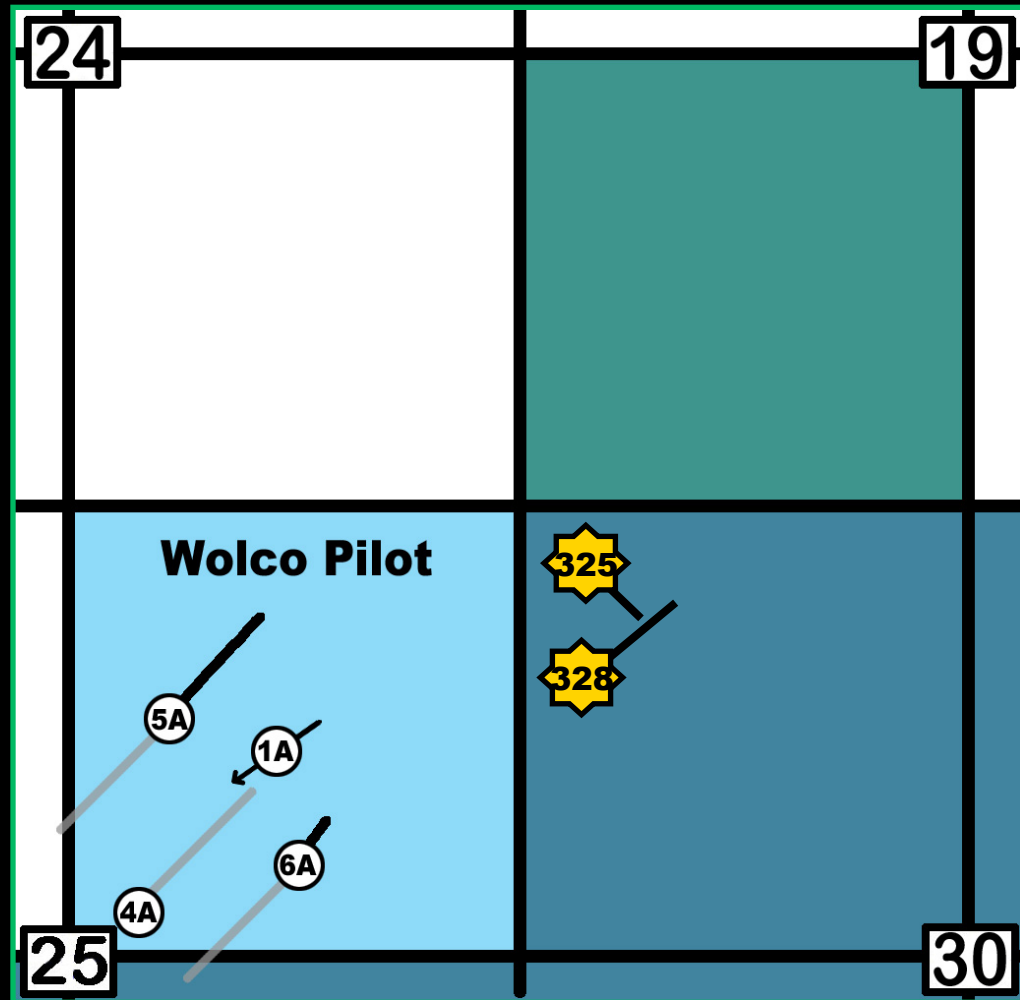




Chapter 7

AVANT EXPANSION

North Avant Expansion



Shot Hole Plug Back

Plug with sand

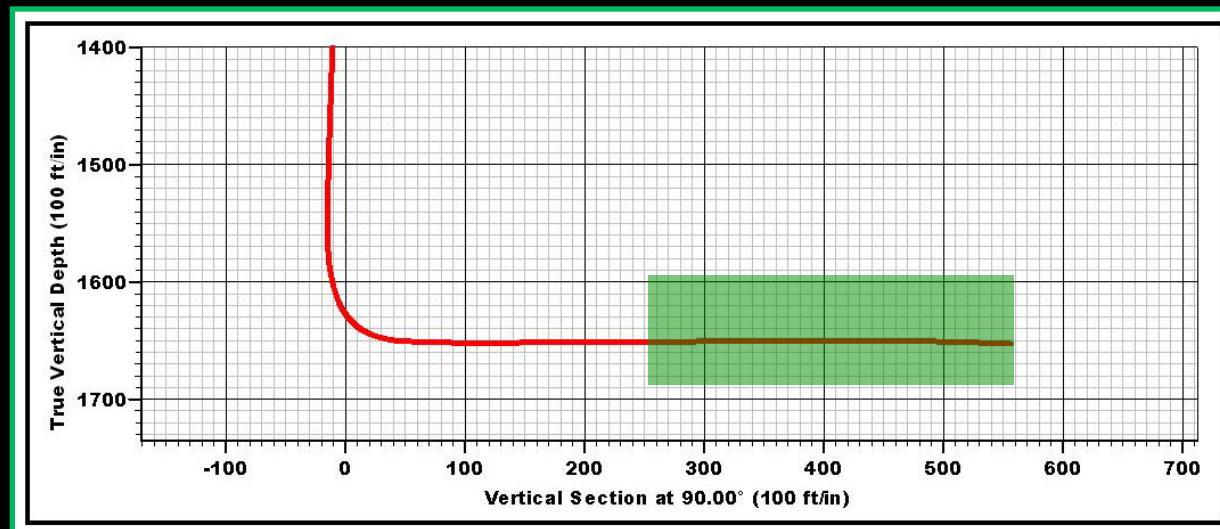
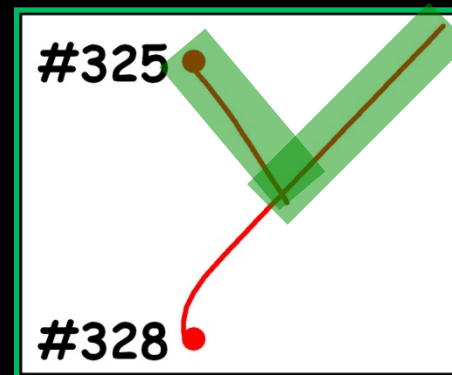
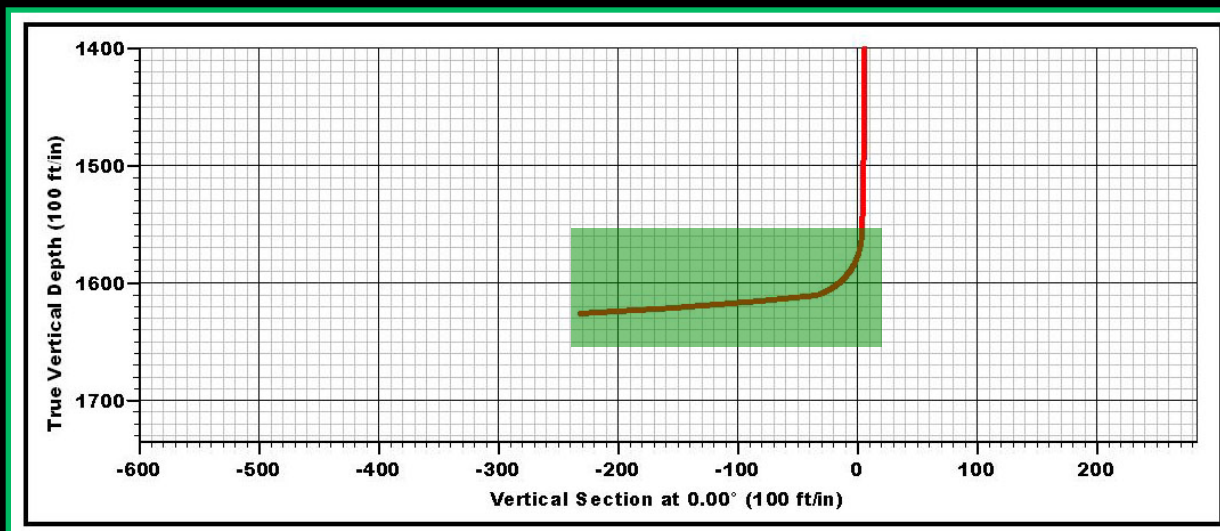
Dress off cement plug to
KOP

Set balanced cement
plug on top of sand into
casing

Drill curve with curve
drilling assembly

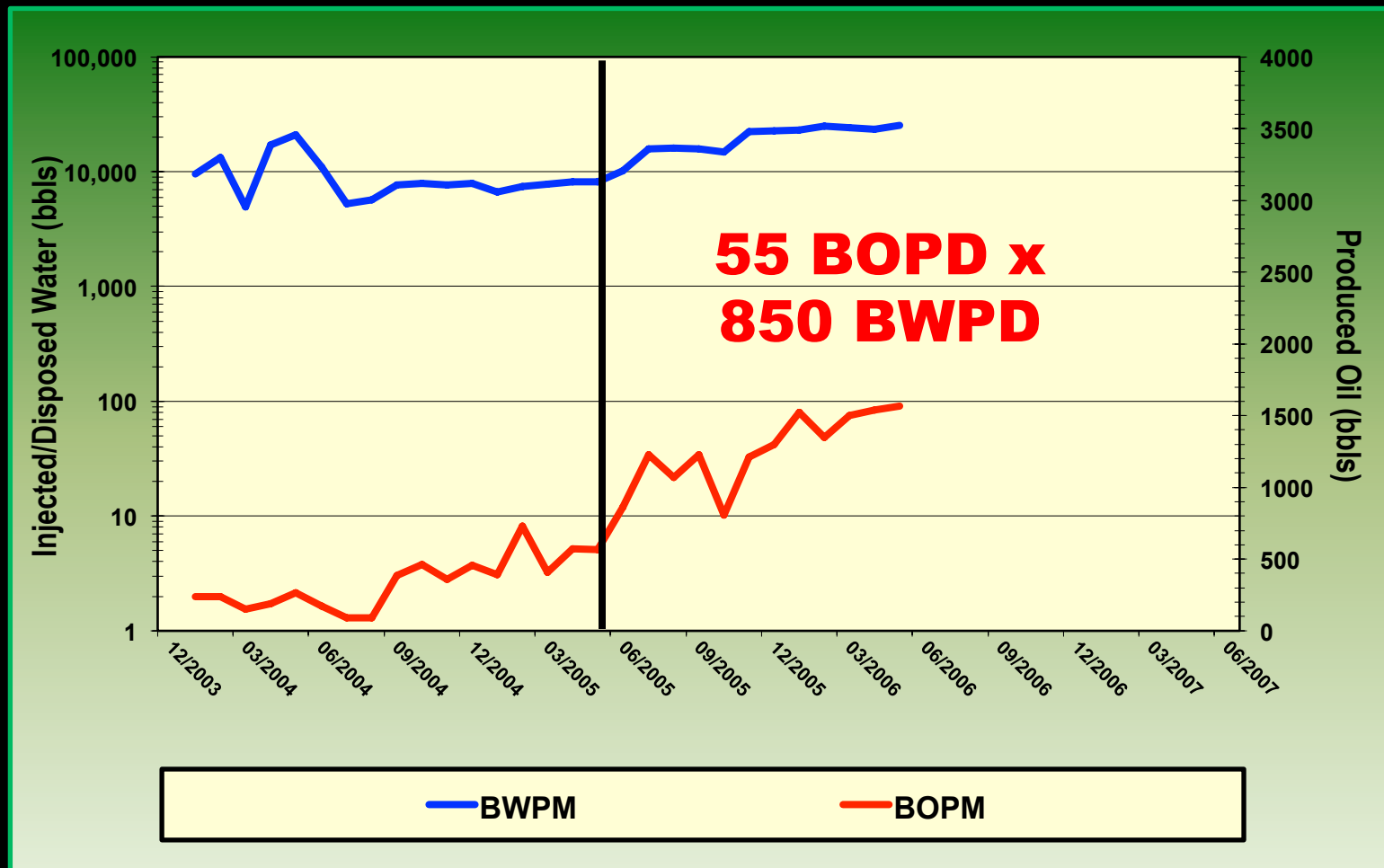
Clean fill and junk
out of hole to below
KOP







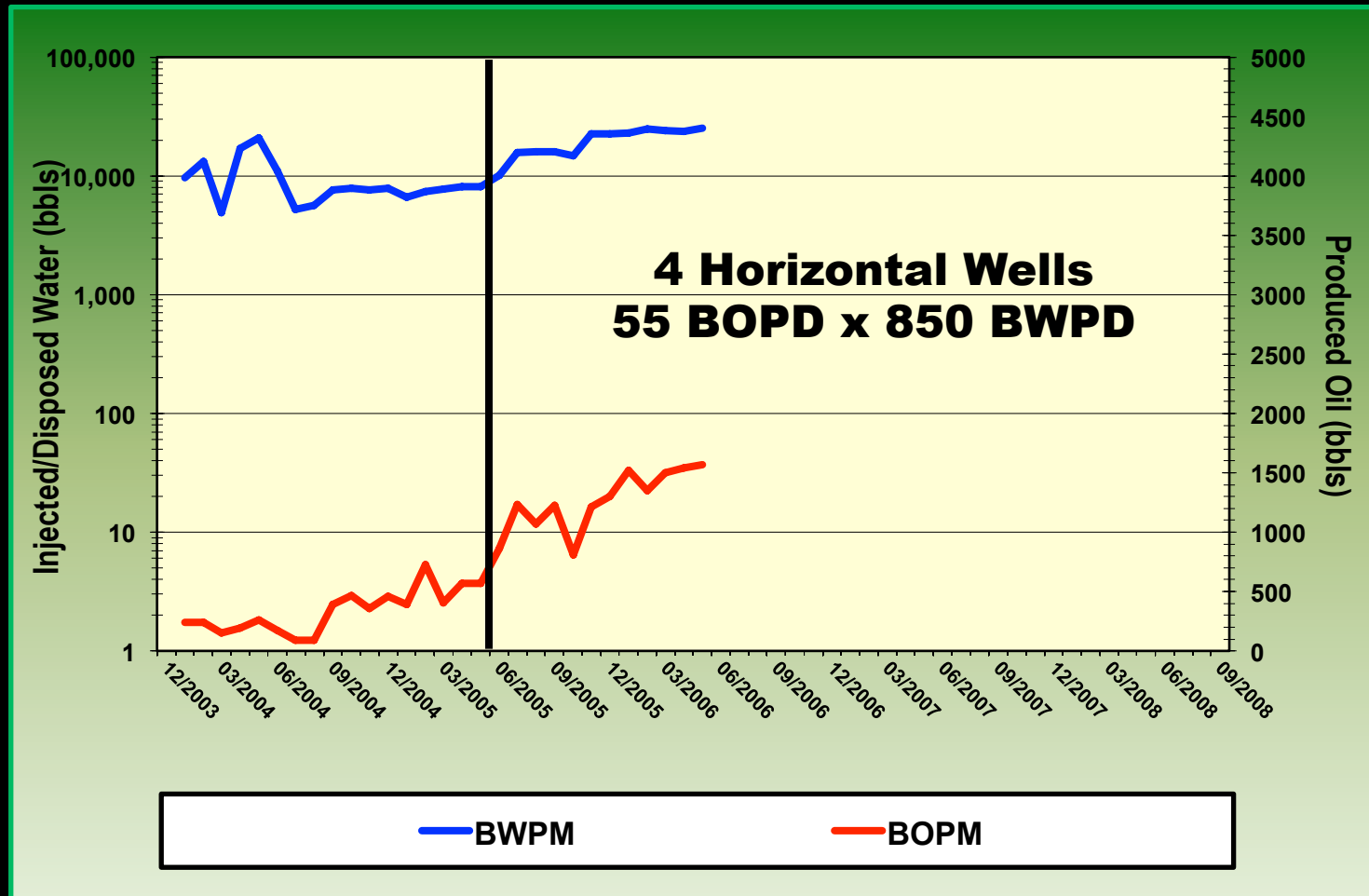
North Avant Expansion



The effect of 325 and 328 on production

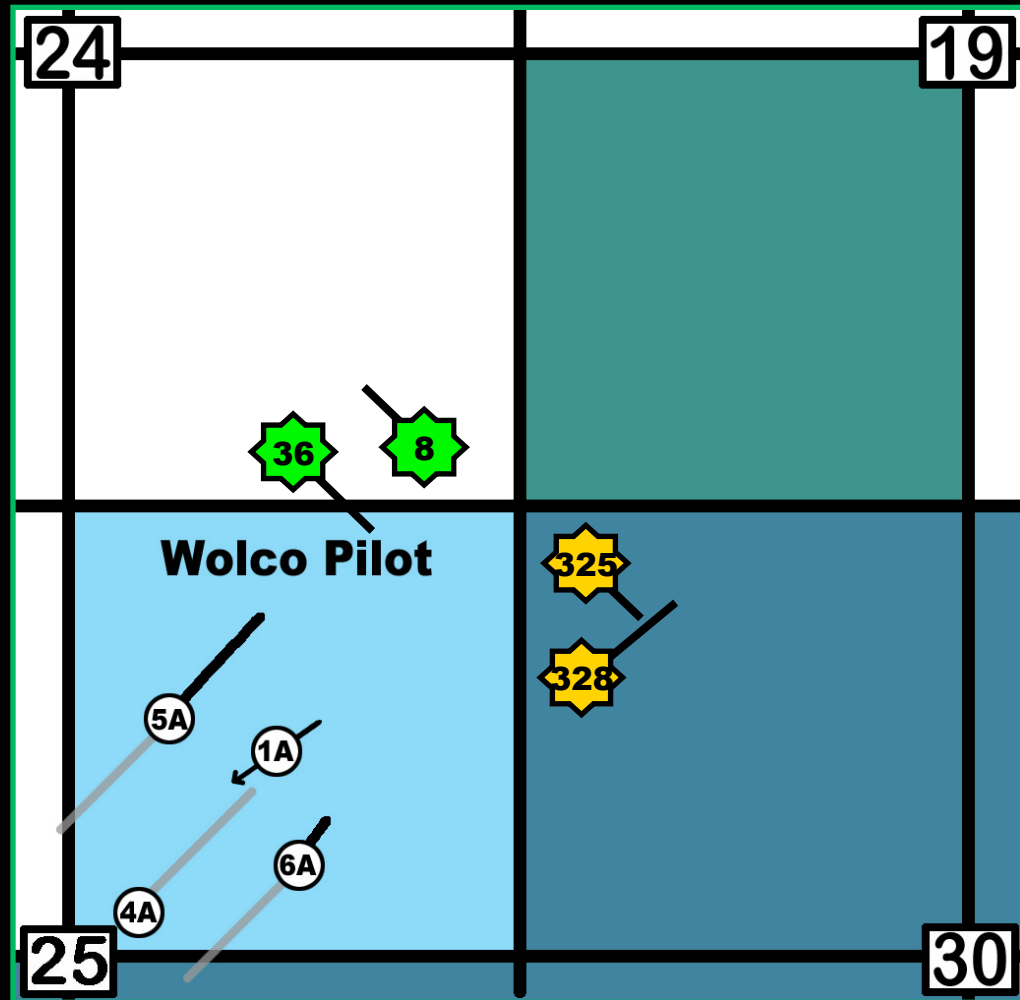


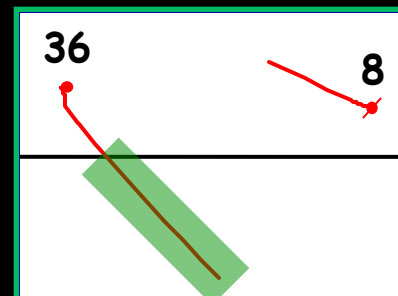
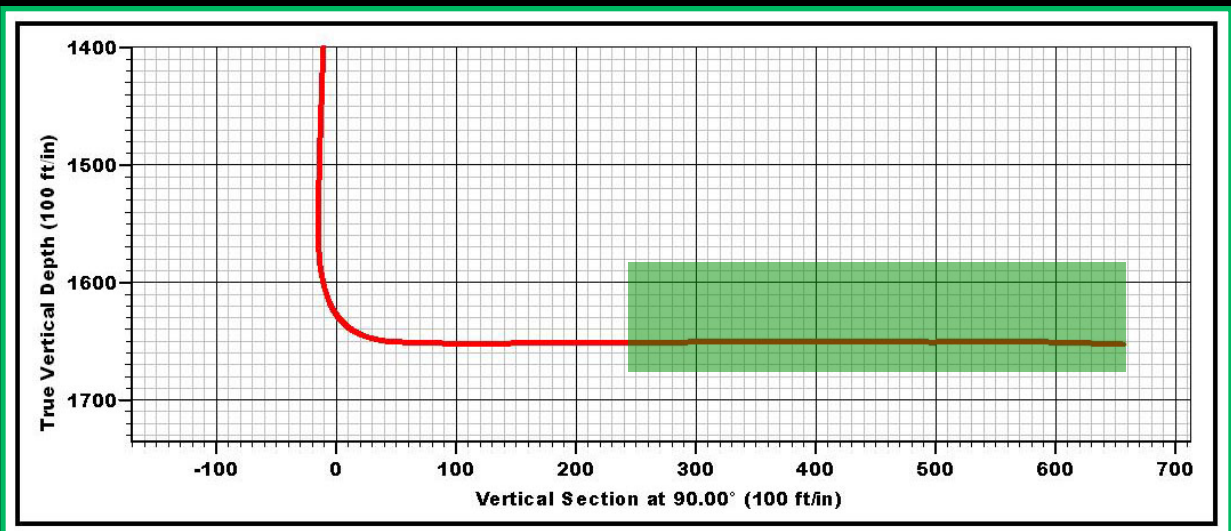
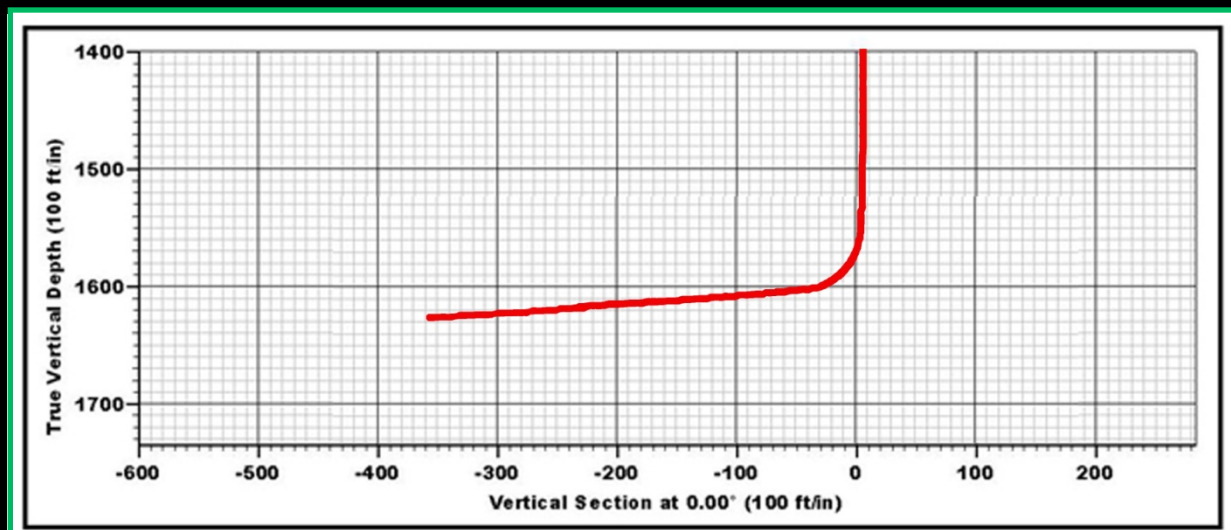
North Avant Expansion



The effect of 325 and 328 on production

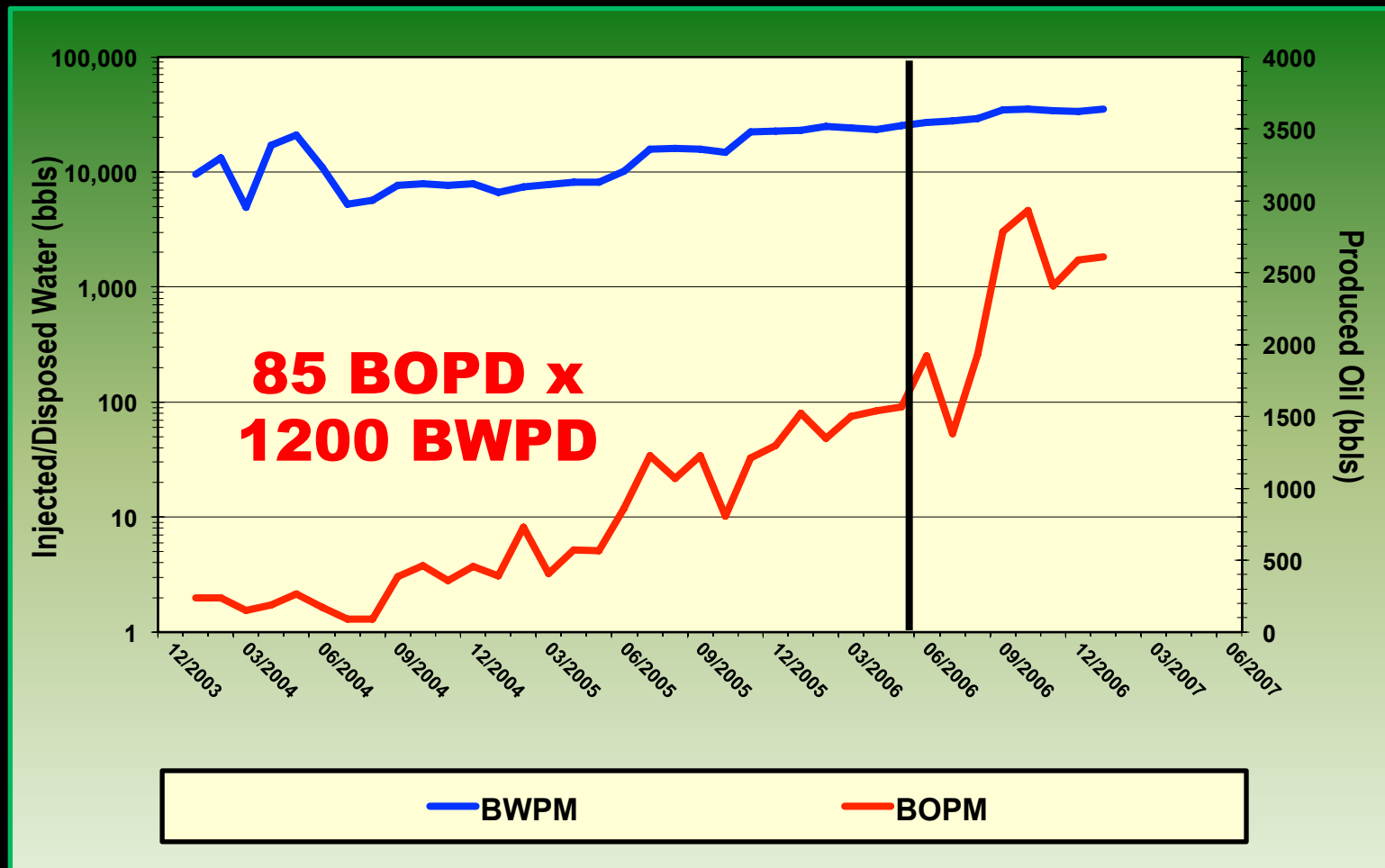
North Avant Expansion







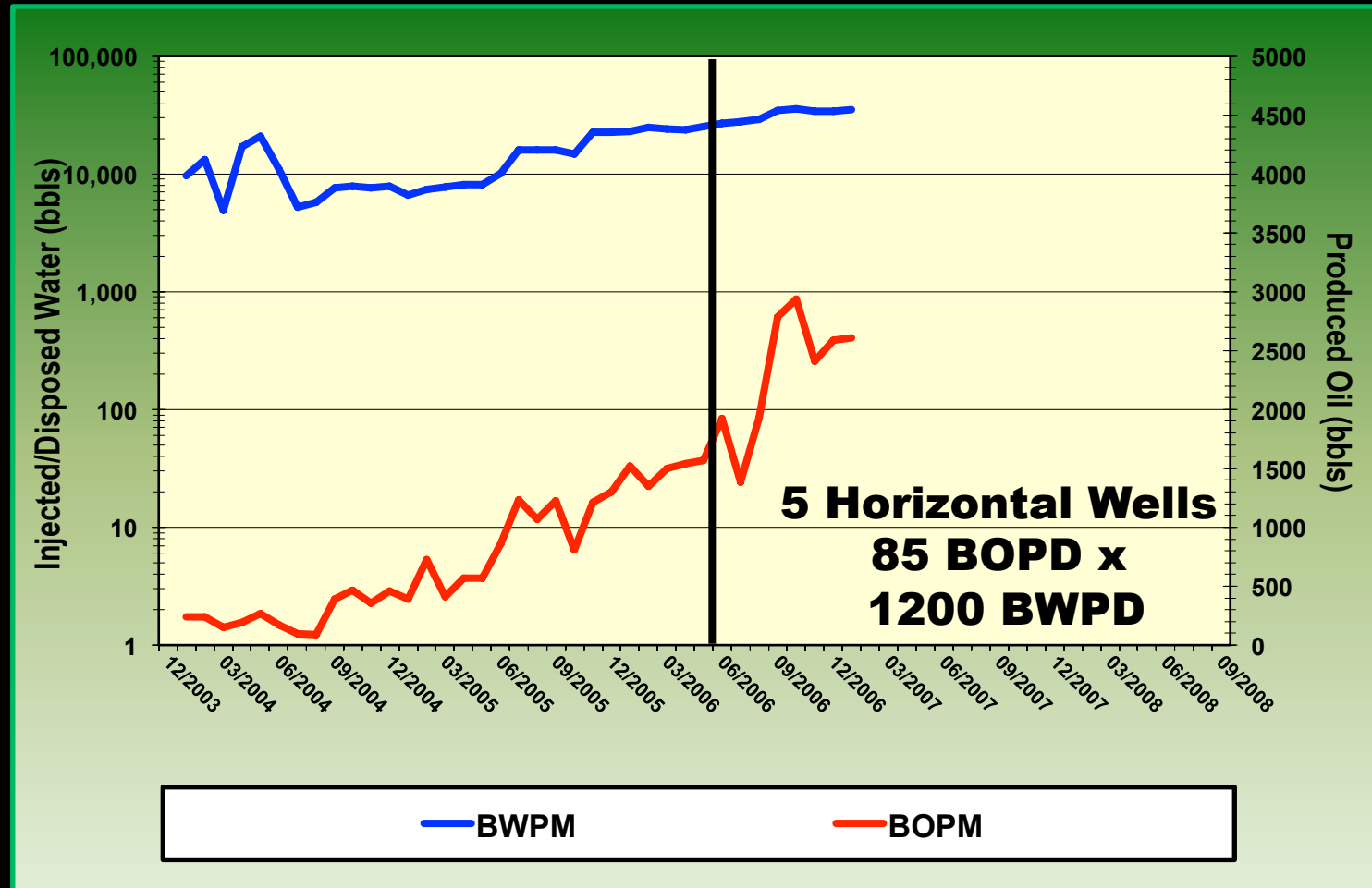
North Avant Expansion



The effect of 36 on production

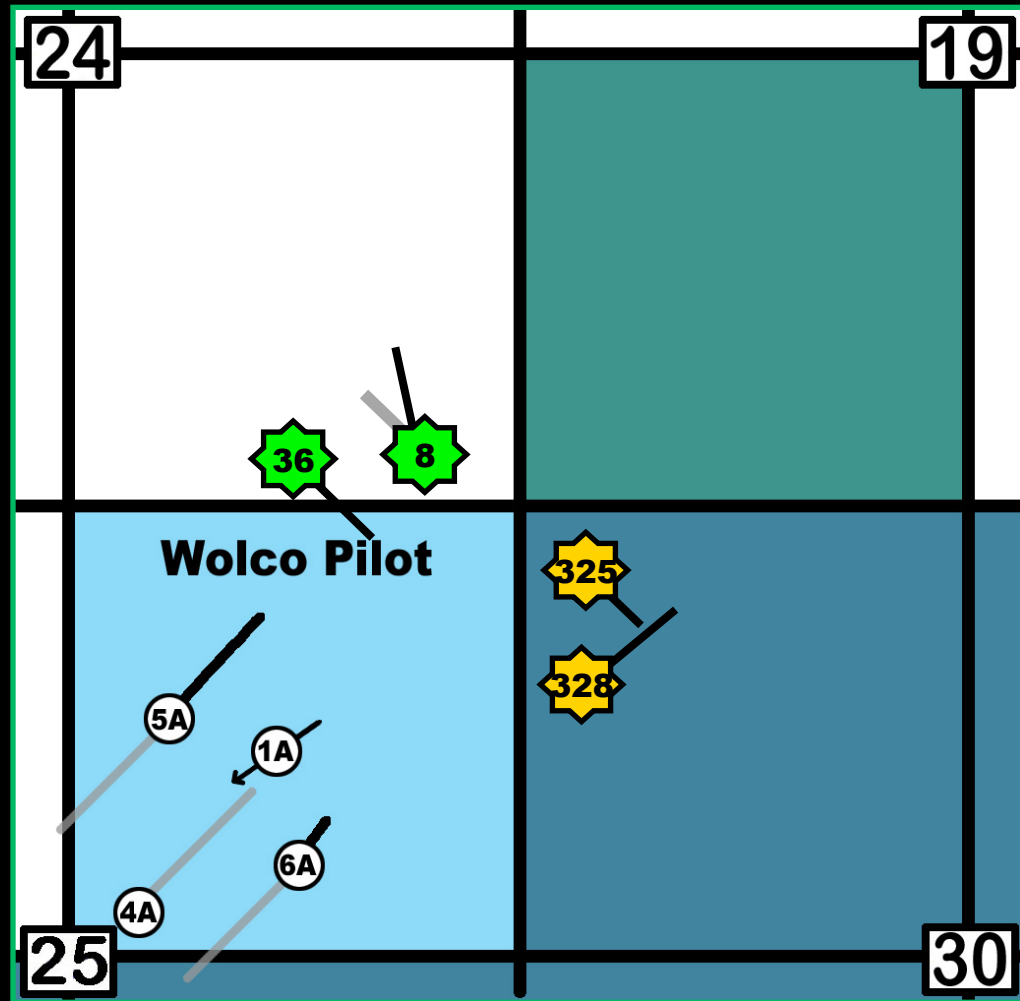


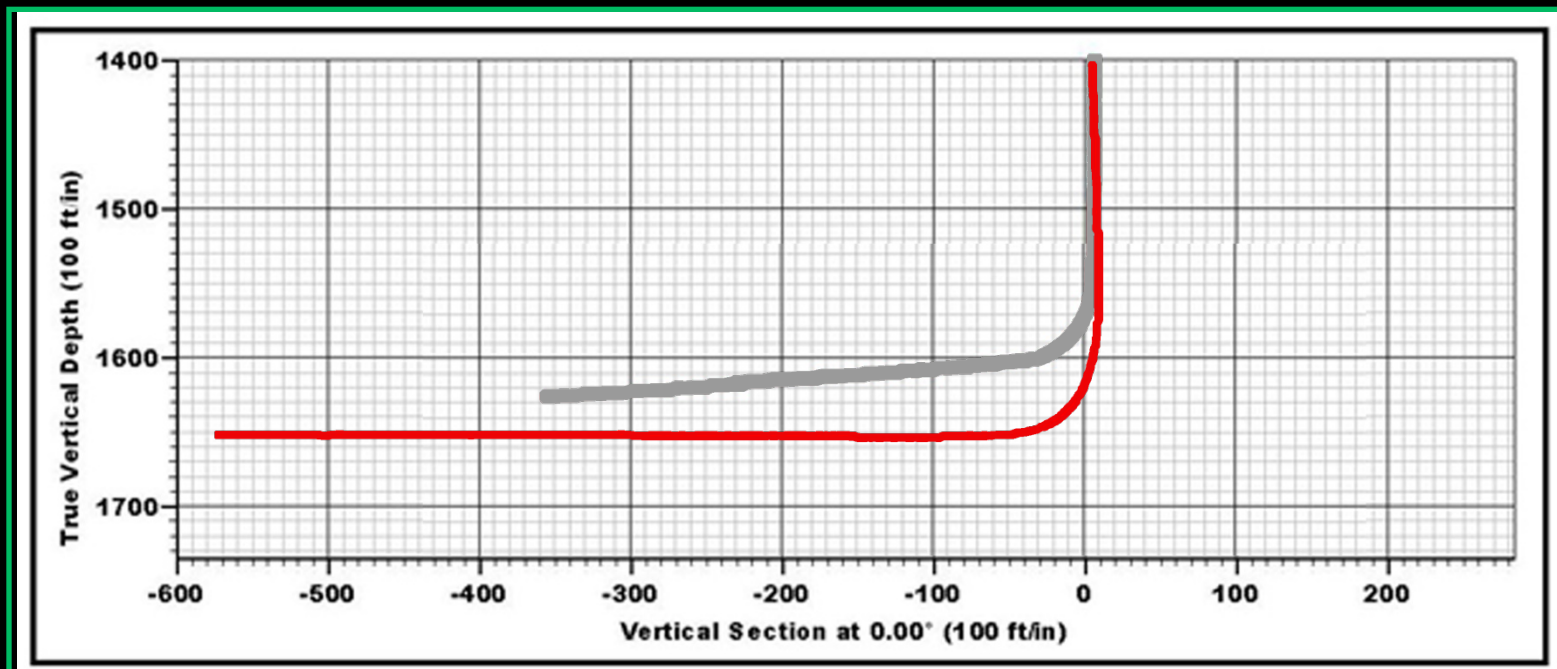
North Avant Expansion



The effect of 36 on production

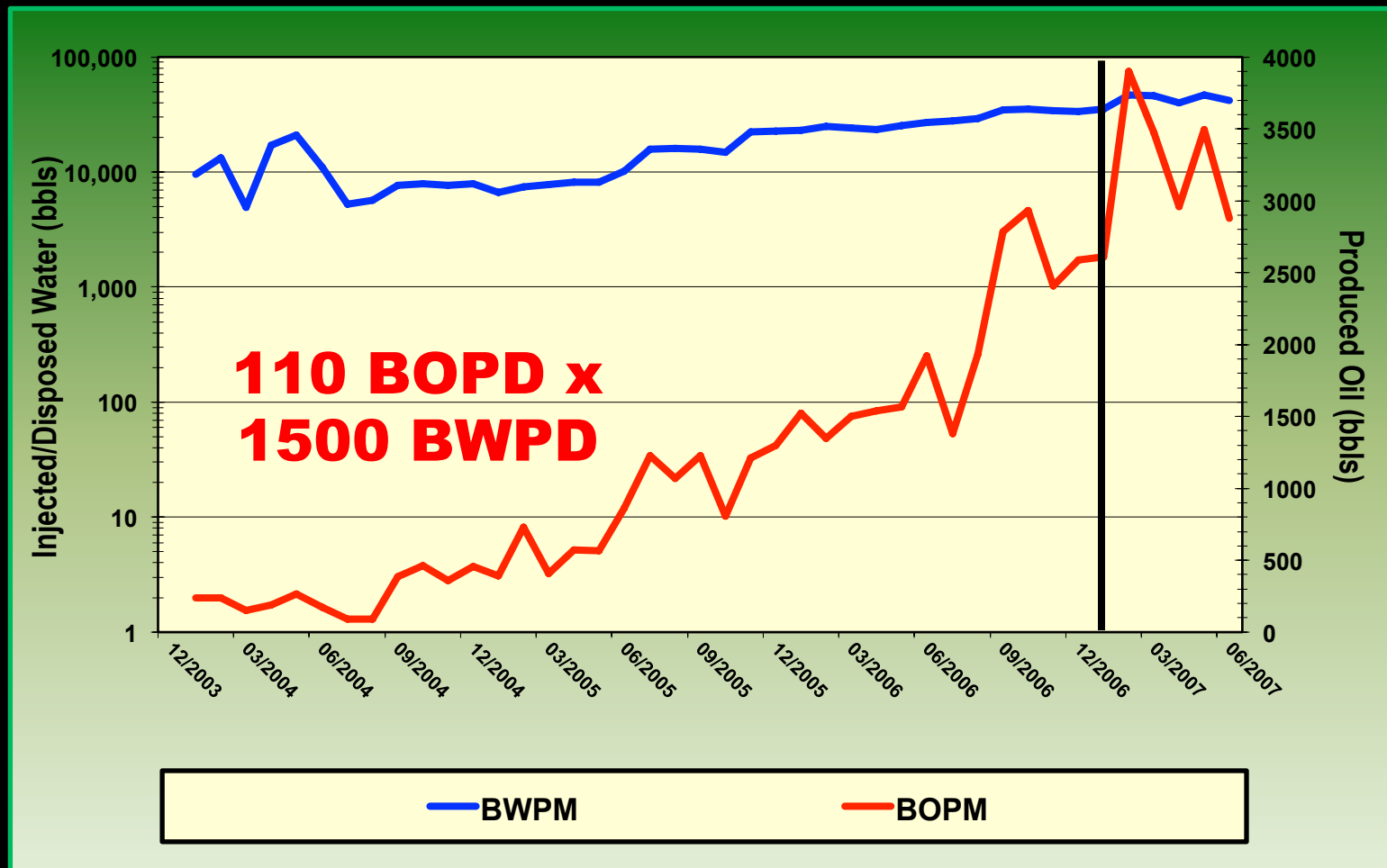
North Avant Expansion







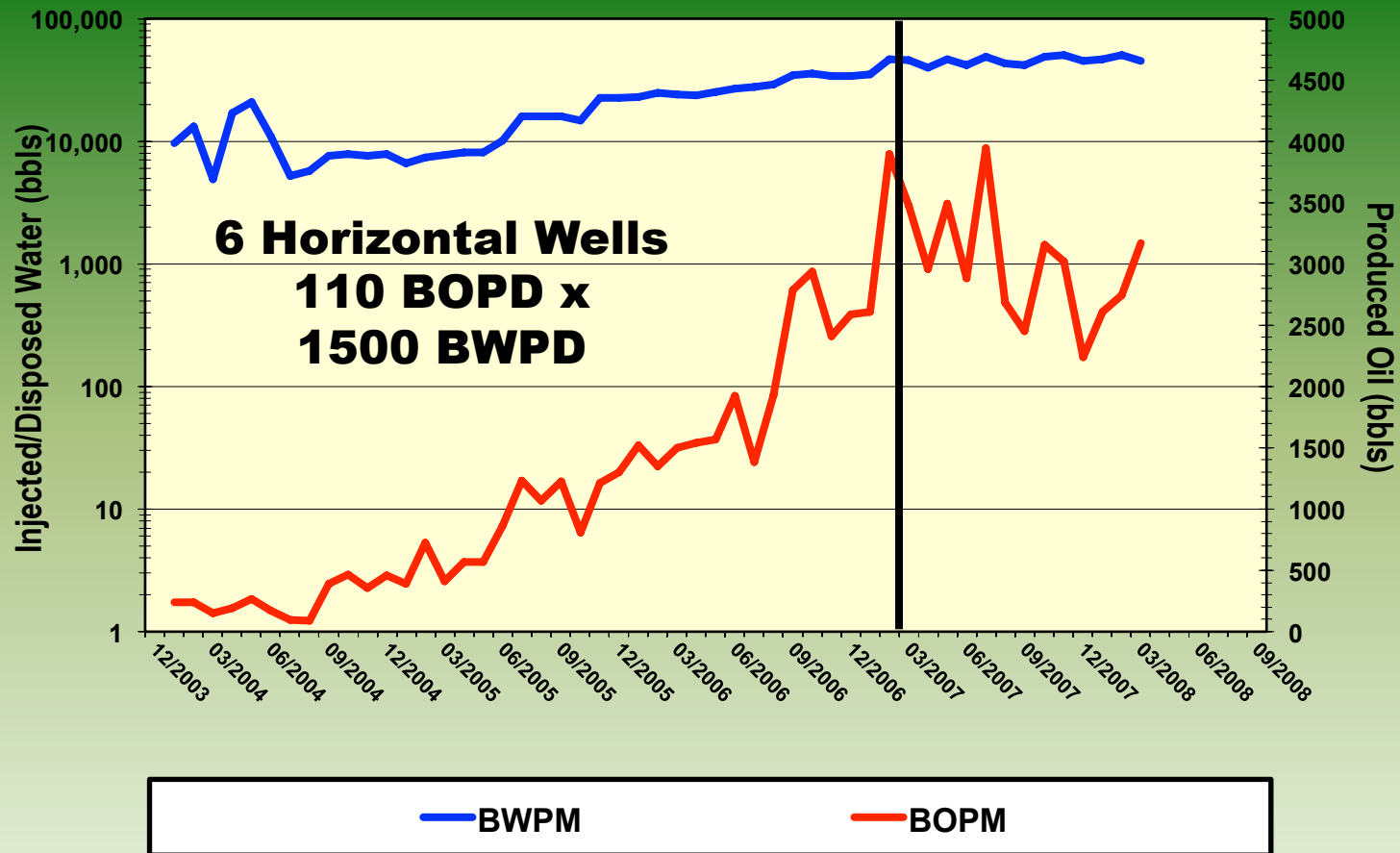
North Avant Expansion



Production after re-drilling 8

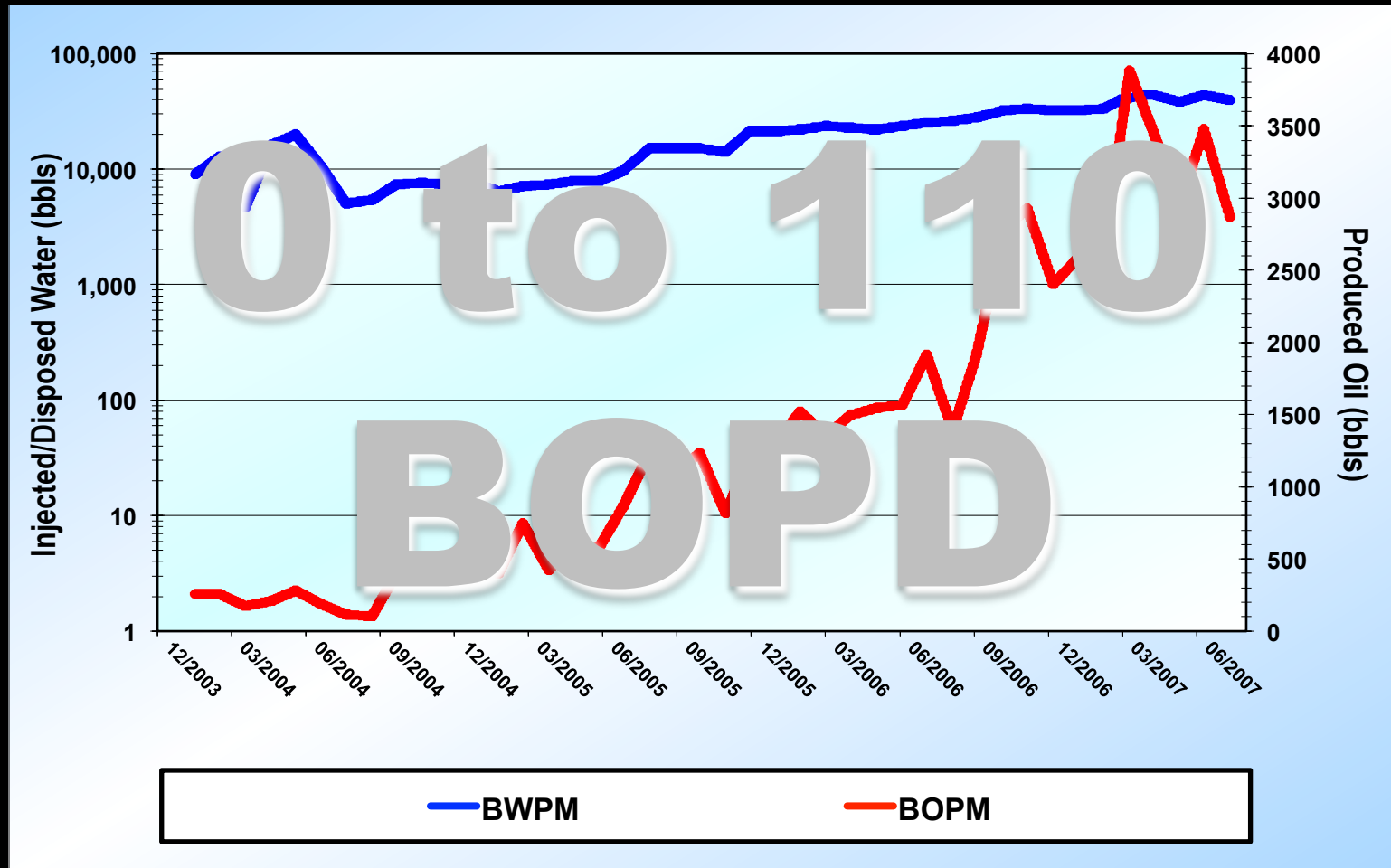


North Avant Expansion



Production after re-drilling 8

How?





Avant Expansion

Conclusion

- 2 new vertical wells:
Re-drilled horizontal
- 4 old wells (95+ years):
Plugged back and drilled horizontal
- 1 old well:
Plugged back and re-drilled horizontal



Workshop Summary

1. Team approach
2. Understand depositional environment
3. Computer model reservoir to determine economics of horizontal wells
4. Determine completion requirements
5. Design horizontal drilling program to satisfy completion requirements