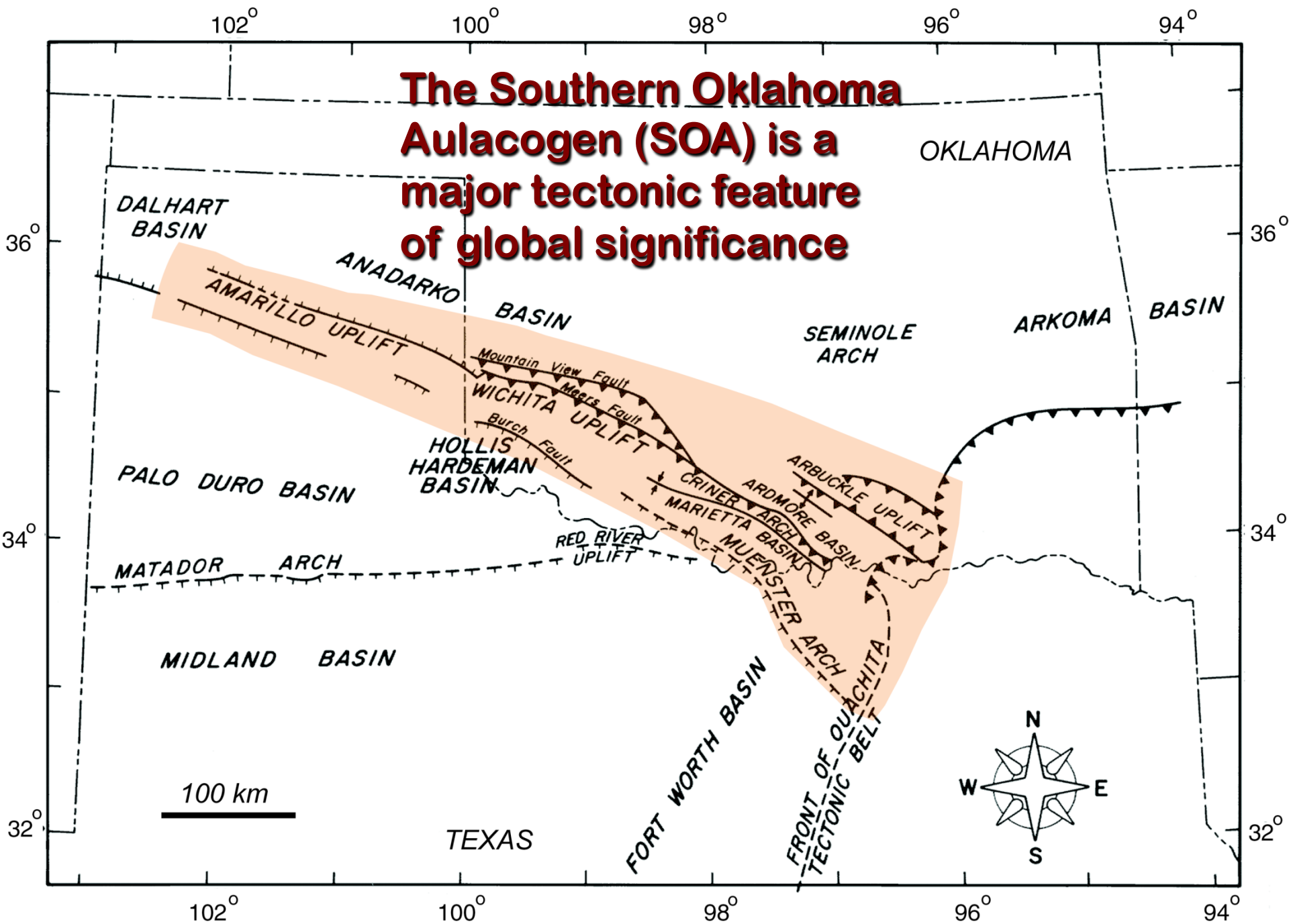


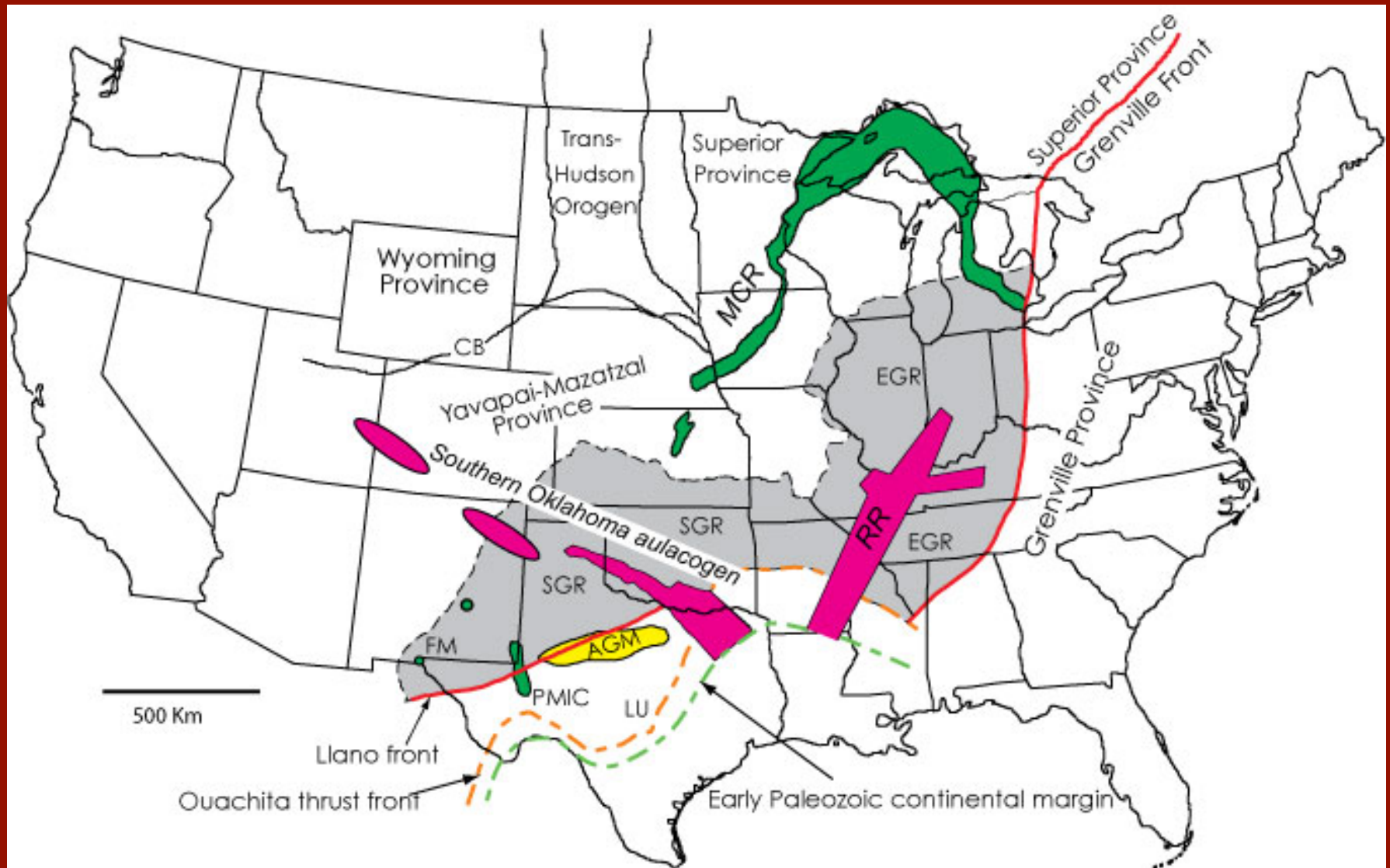
The Granite Wash: A Few Thoughts About The Big Picture

G. Randy Keller



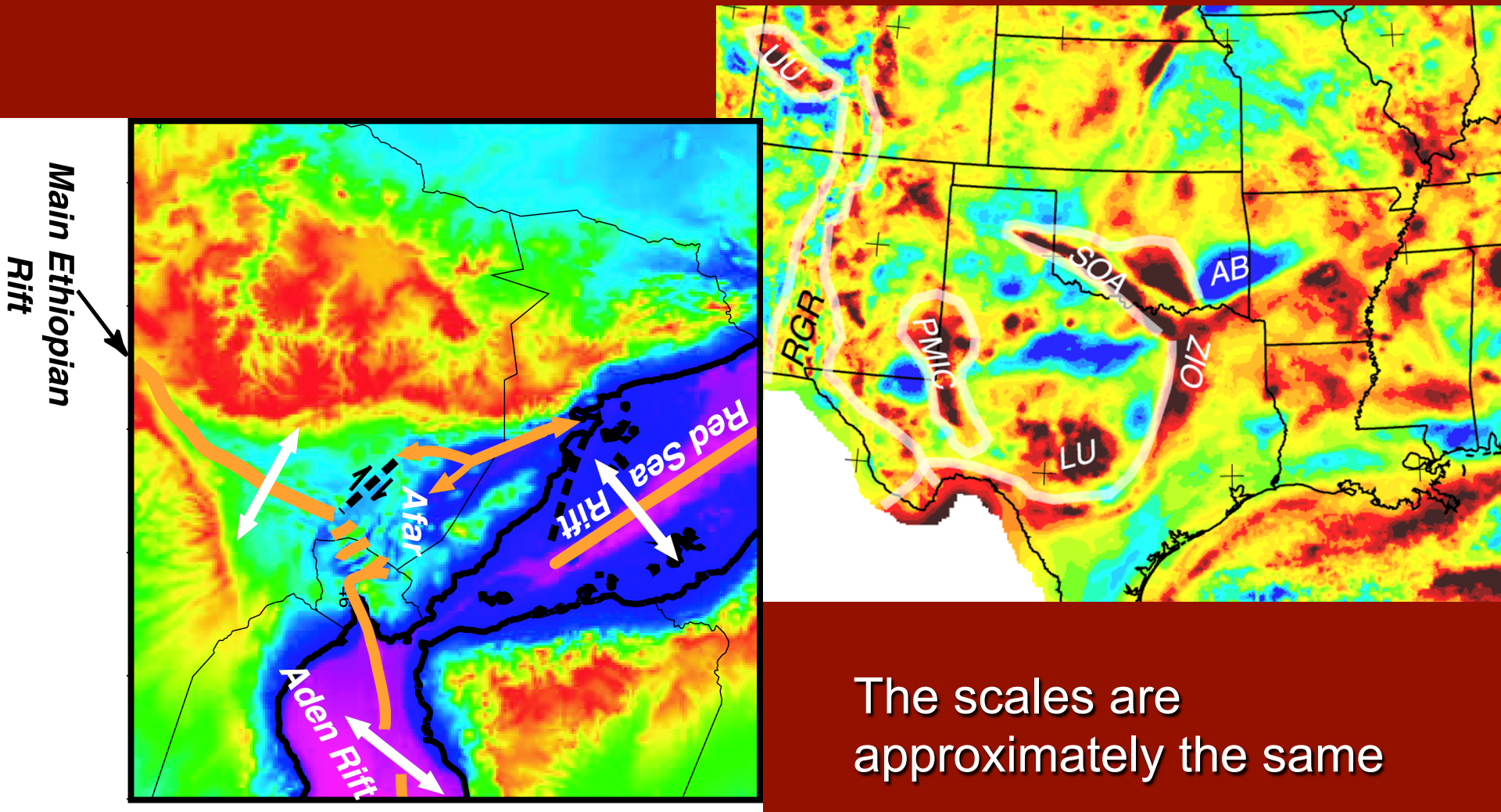


The Late Precambrian Structural Framework

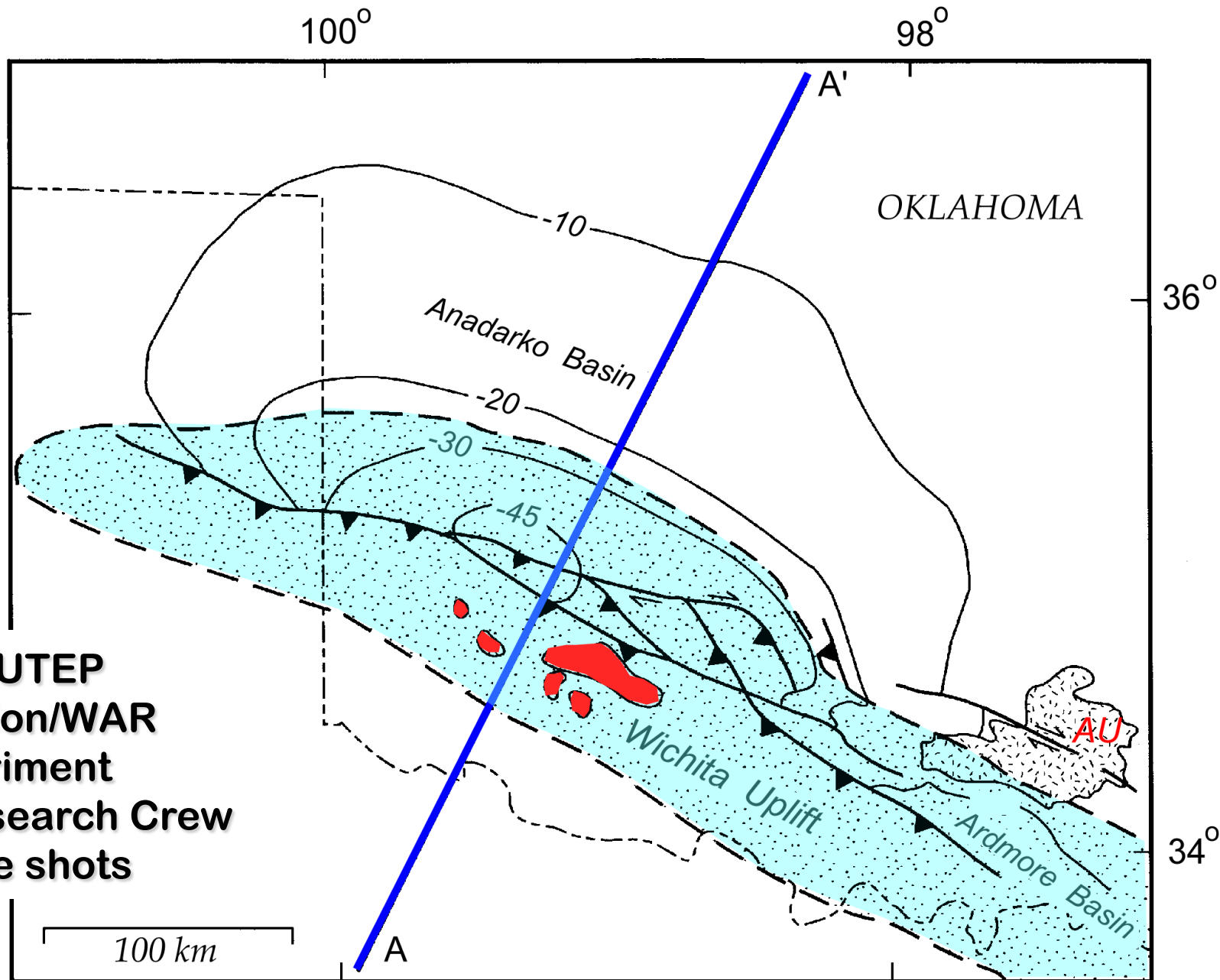


(modified from Barnes and others, 1999, originally modified from Van Schmus and others, 1996).

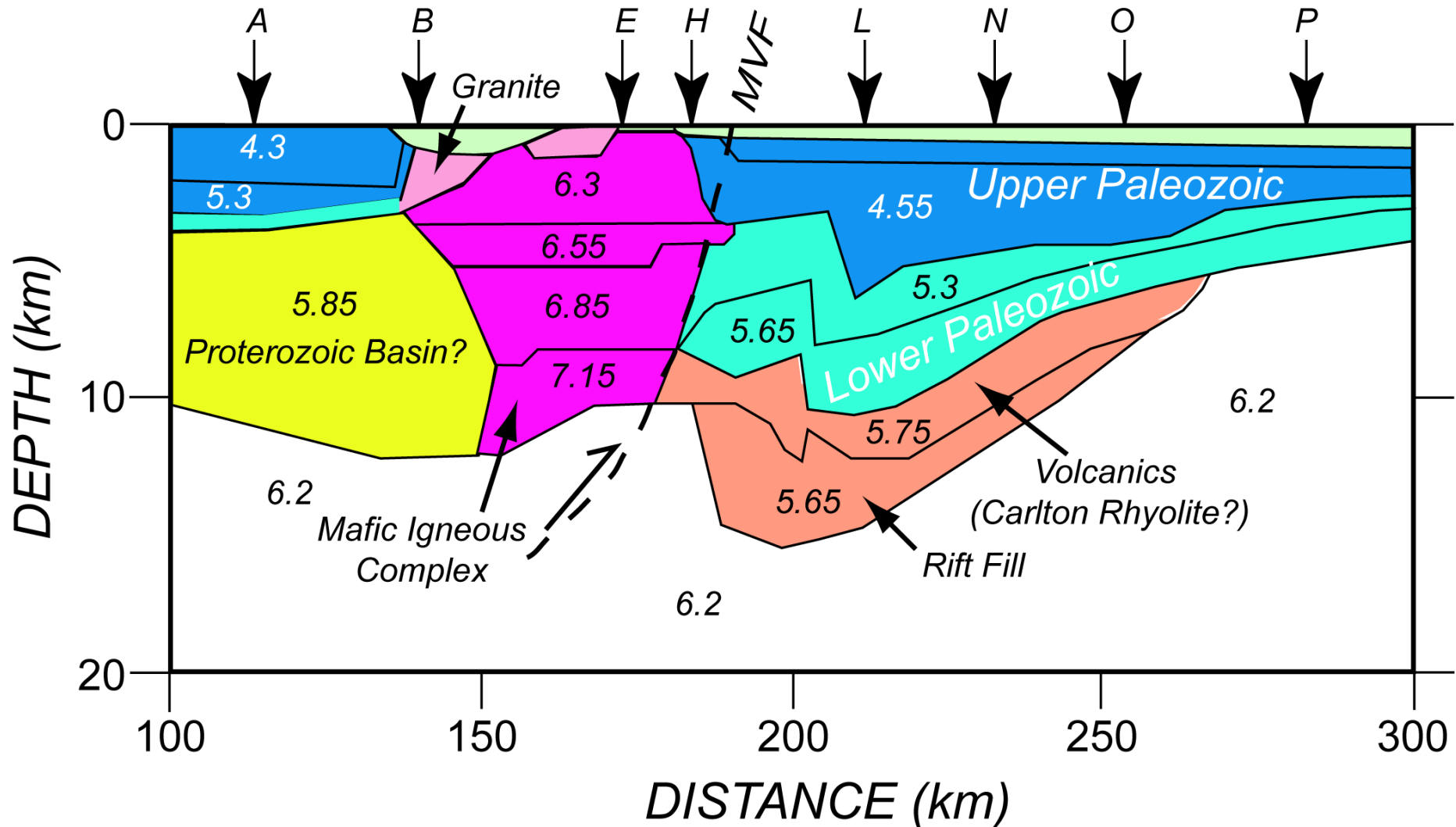
Afar vs. SOA Triple Junctions



**UTD/UTEP
Refraction/WAR
Experiment
AMOCO Research Crew
21 large shots**

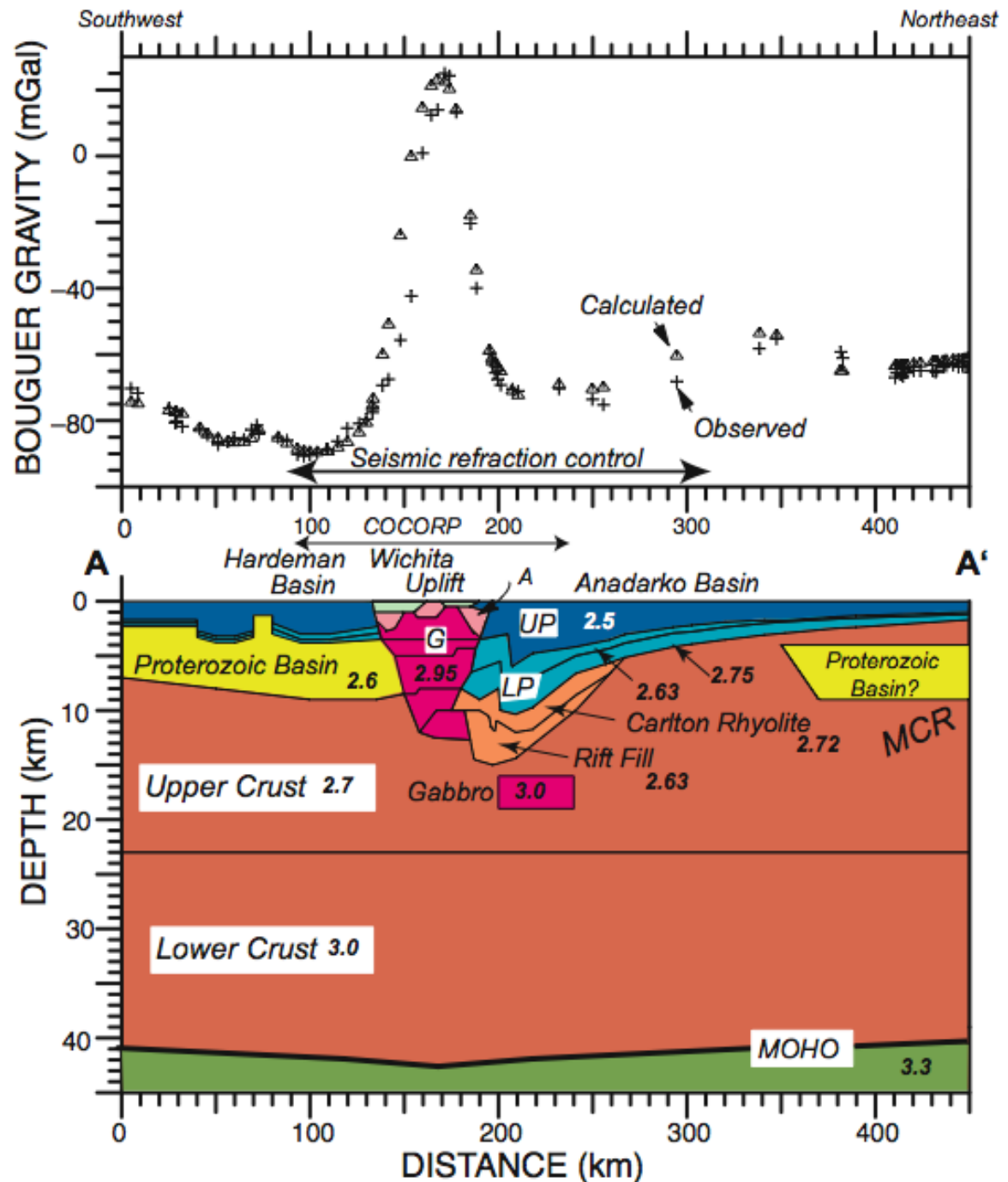


SOA Velocity Model-Upper Crust

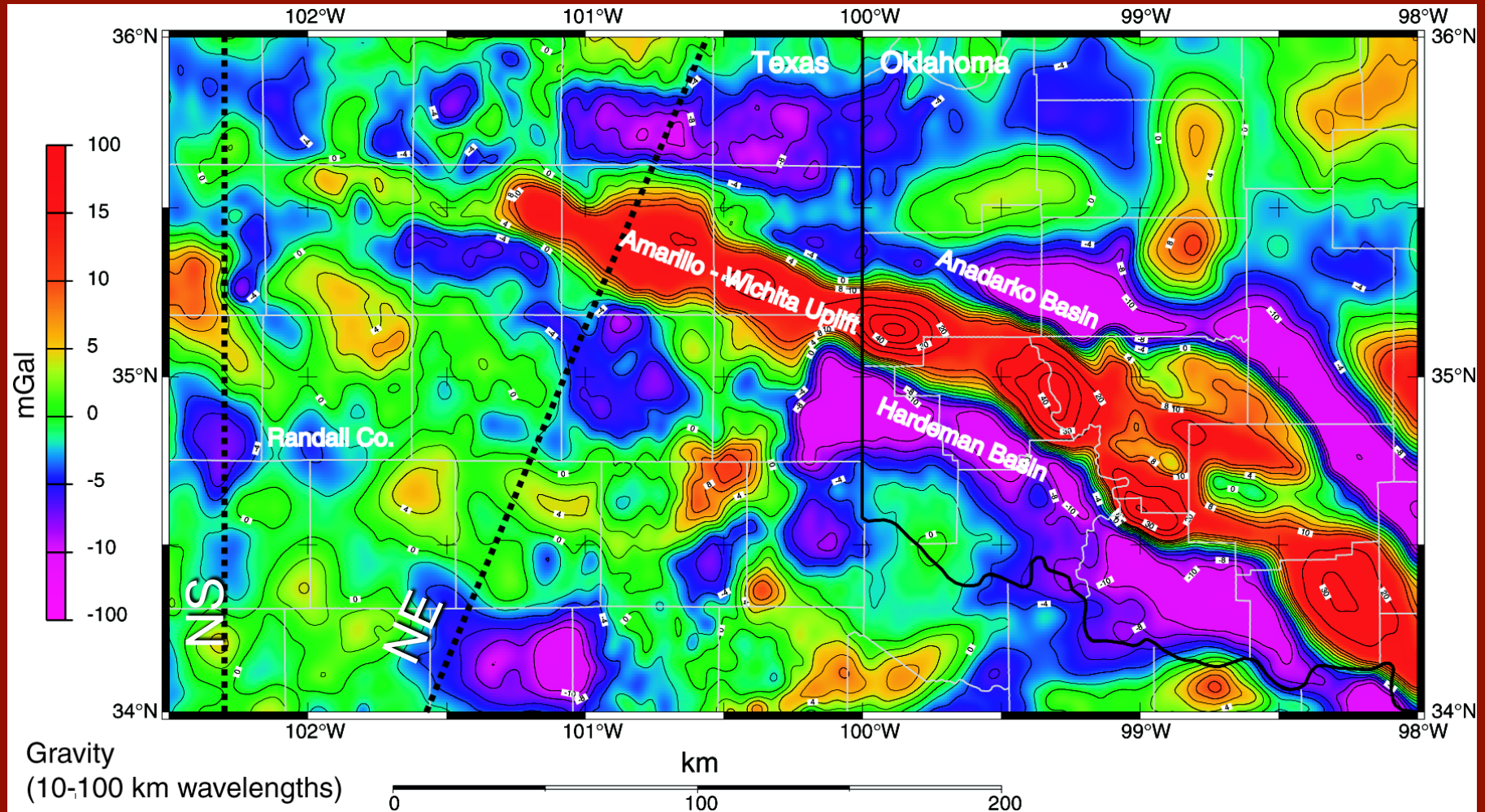


Crustal model derived by integrated analysis of seismic, geologic, and gravity data

The mafic core of the Wichita uplift resides almost completely in the upper plate of the Mountain View thrust system

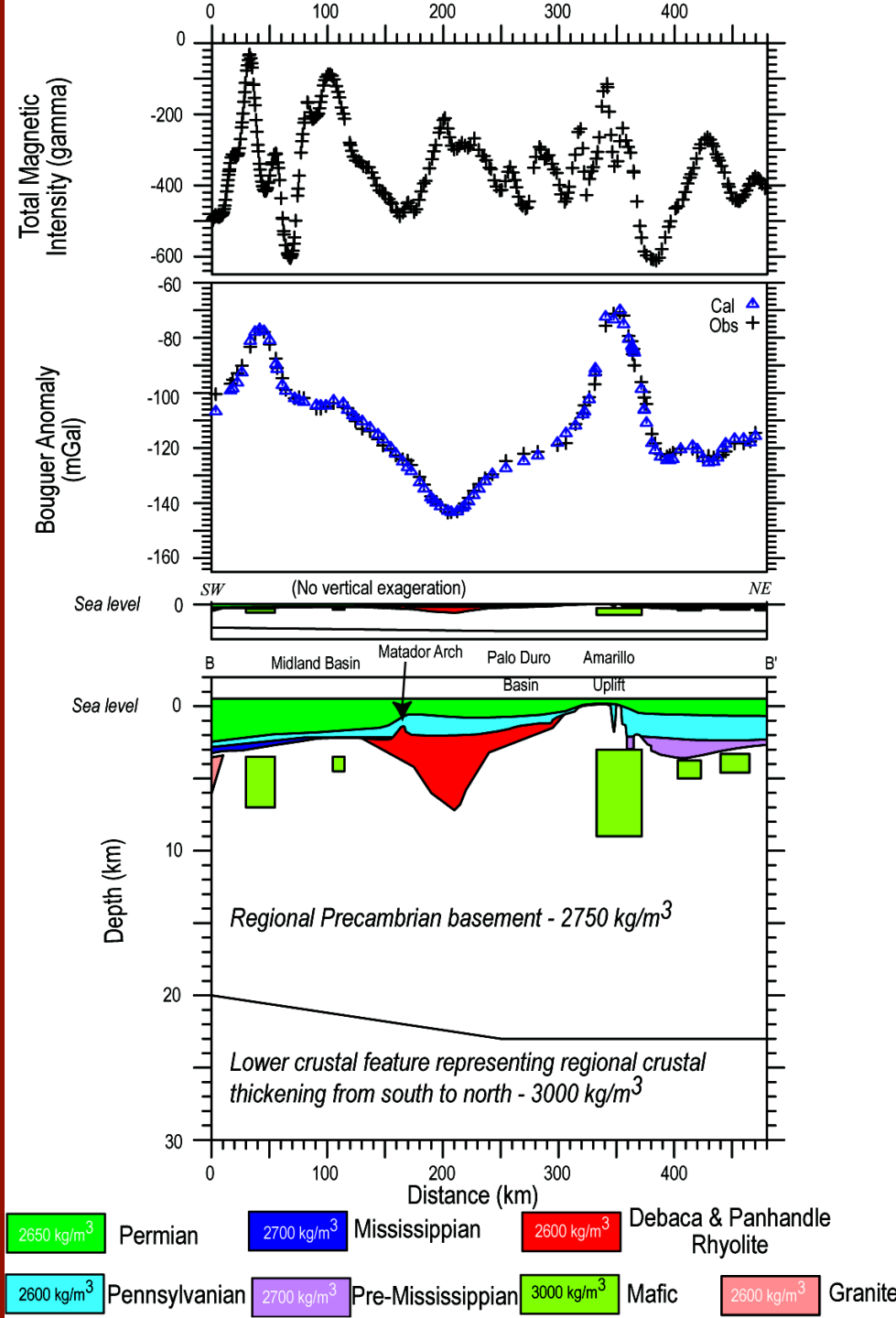


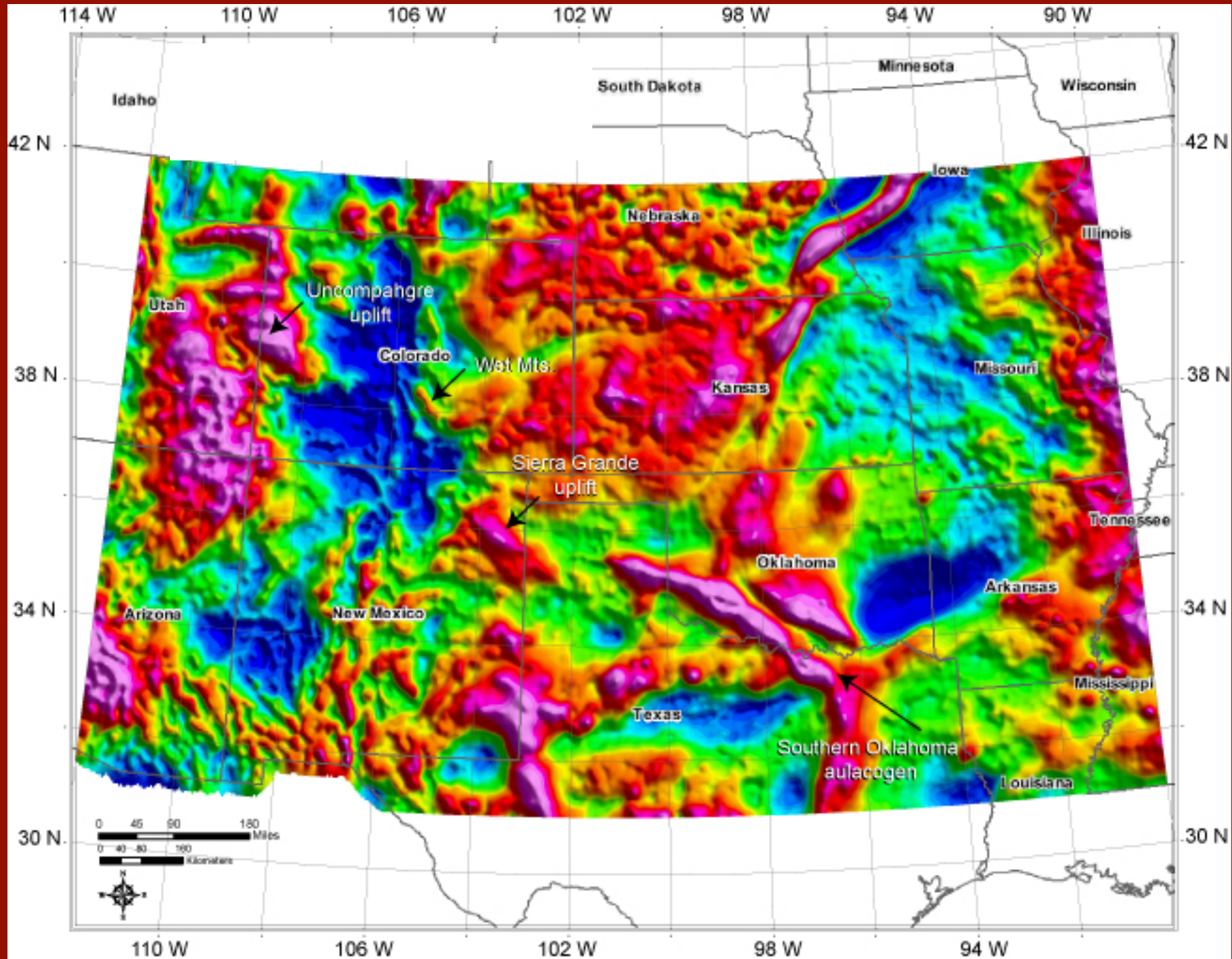
Gravity Anomalies - Amarillo Uplift



Integrated model for the NE profile (by Diana Smith)

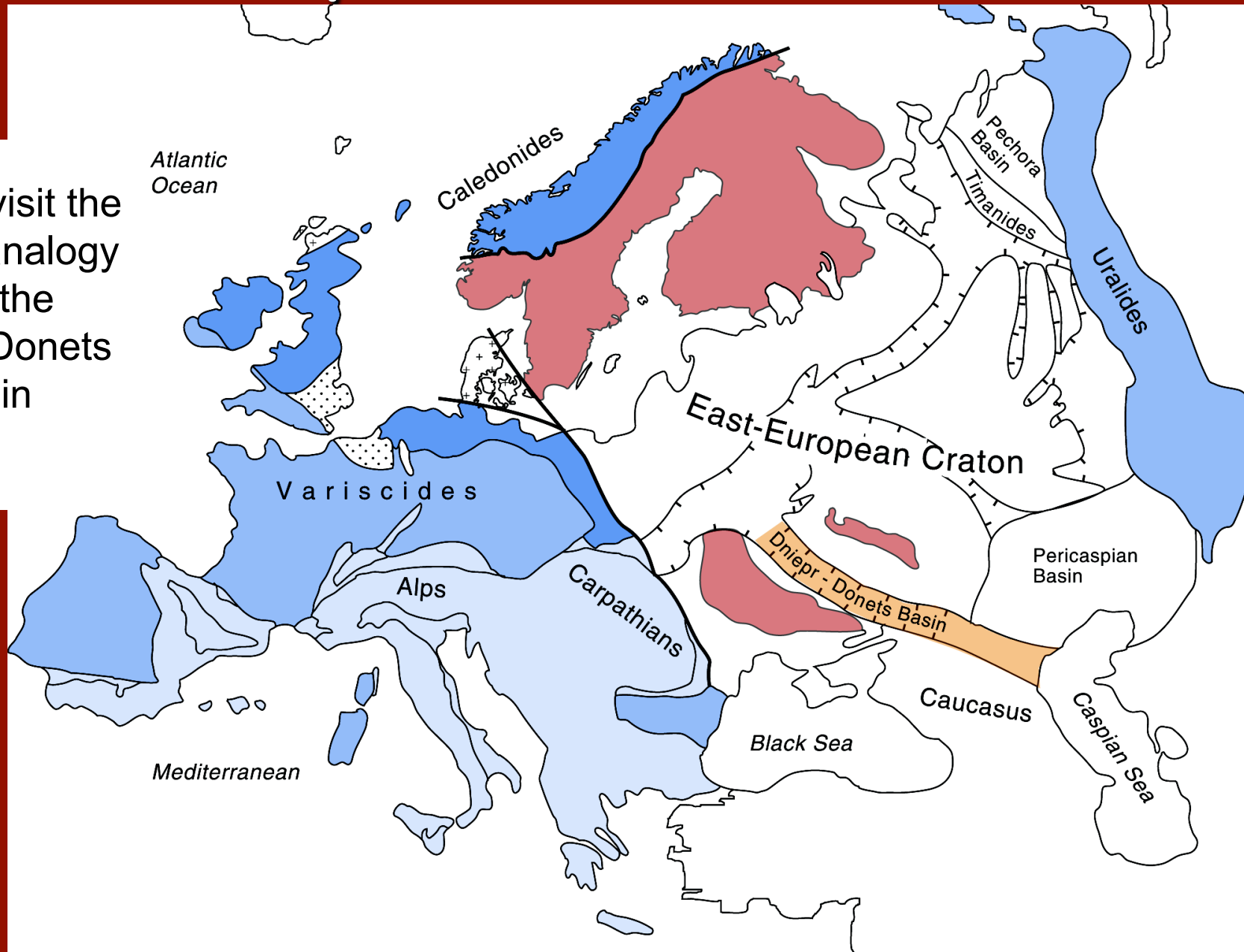
A large mafic core
and a nearly vertical
fault on the north side
of the uplift are
required to fit the
observed data.



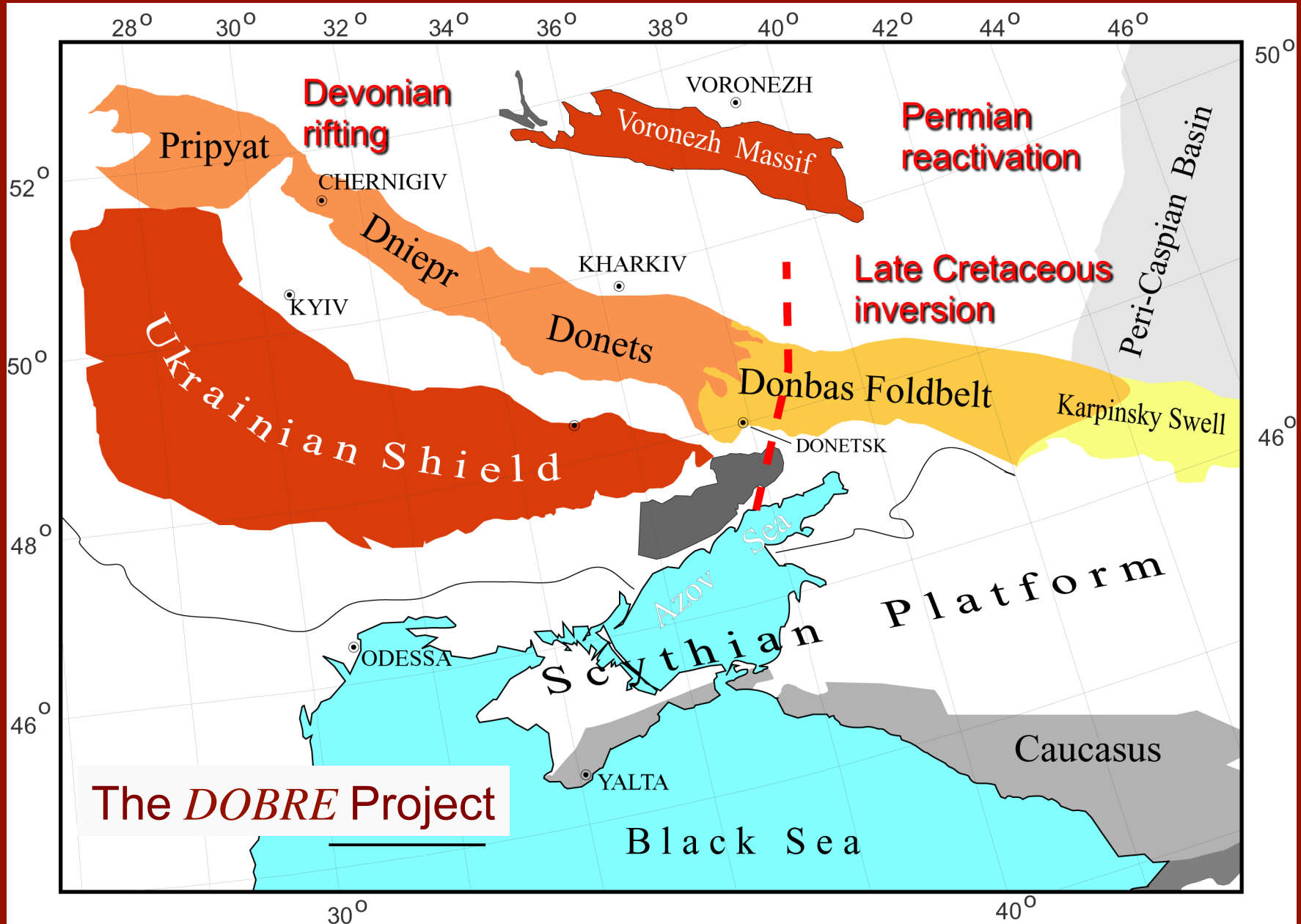


European Tectonics

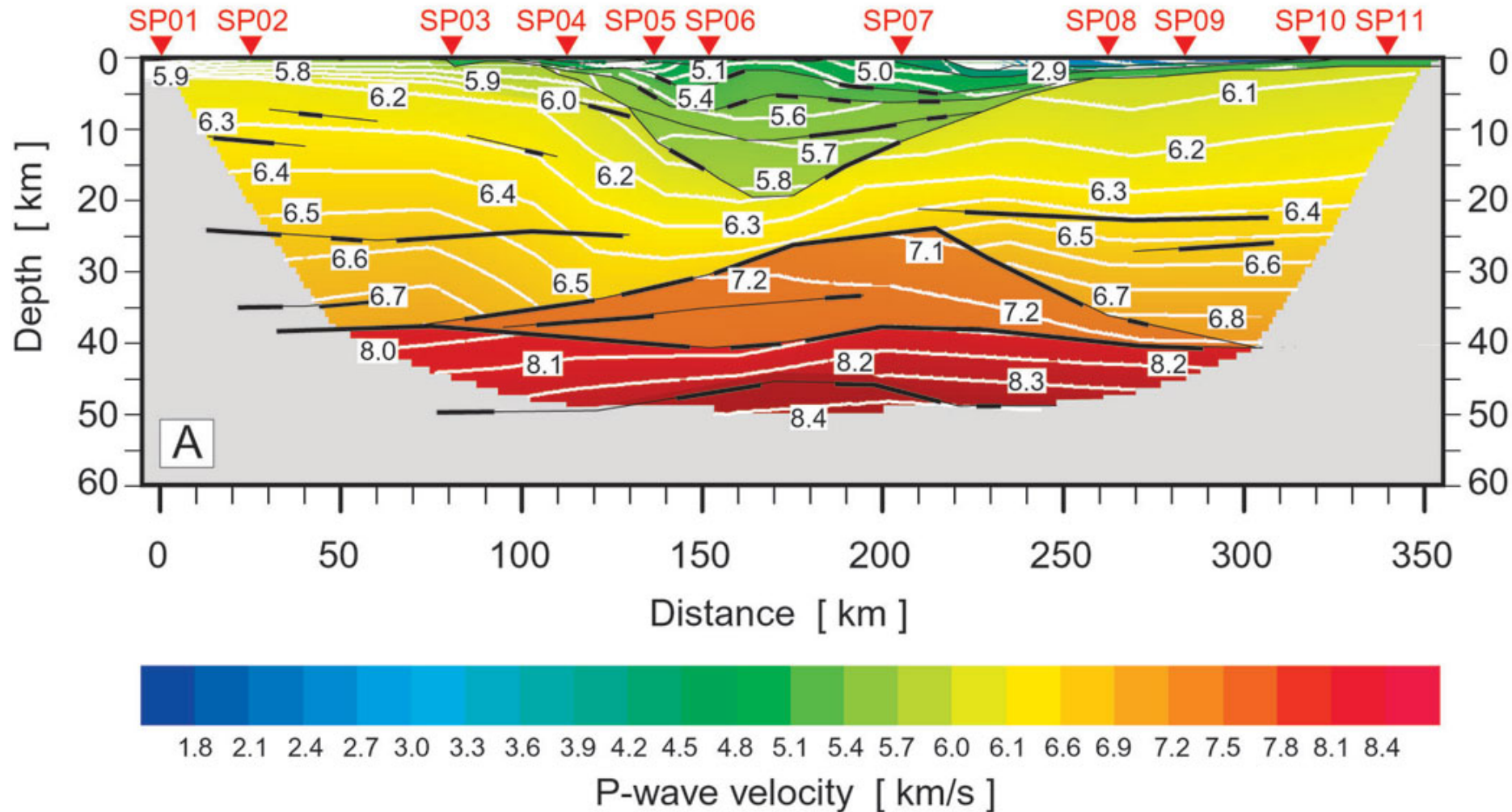
Let's revisit the classic analogy with the Dniepr-Donets basin



Pripyat-Dniepr-Donets-Basin



SW	Ukrainian shield	Donets basin	Voronezh massif	NE
-----------	------------------	--------------	-----------------	-----------



Major tectonic inversion that involved thrusting and strike-slip created the structures that were the source of the “Granite Wash”. A better understanding of these structures should help our efforts to exploit the “Granite Wash” and perhaps even find new fields.