

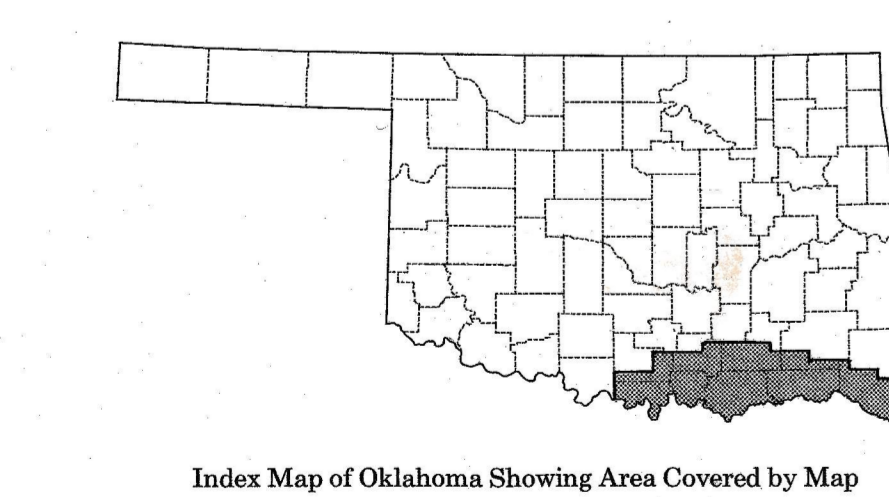
Base from U.S. Geological Survey 1:250,000 series: Ardmore, 1967; Sherman, 1963; McAlester, 1946; and Texarkana, 1950

Geology compiled by R. O. Fay in Harp D. L., Jr., 1974, and Marcher, M. V., and Bergman, D. L., in preparation

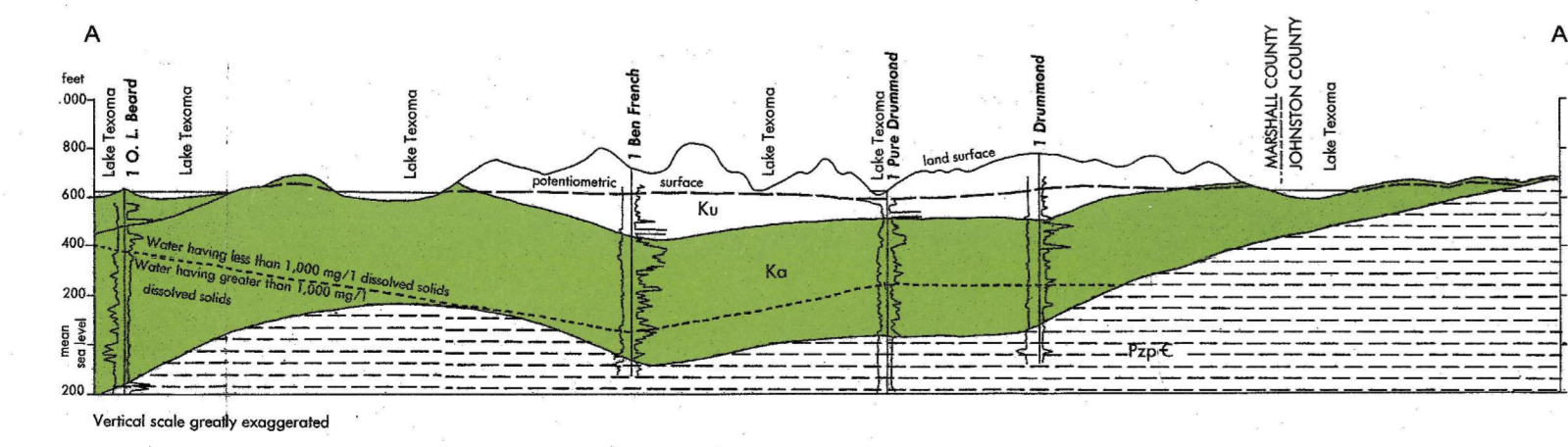
SCALE 1:250,000  
CONTOUR INTERVAL 100 FEET  
WITH SUPPLEMENTARY CONTOURS AT 50-FOOT INTERVALS  
DATUM: MEAN SEA LEVEL

**EXPLANATION**  
*The stratigraphic nomenclature is that of the Oklahoma Geological Survey and does not necessarily agree with that of the U.S. Geological Survey.*

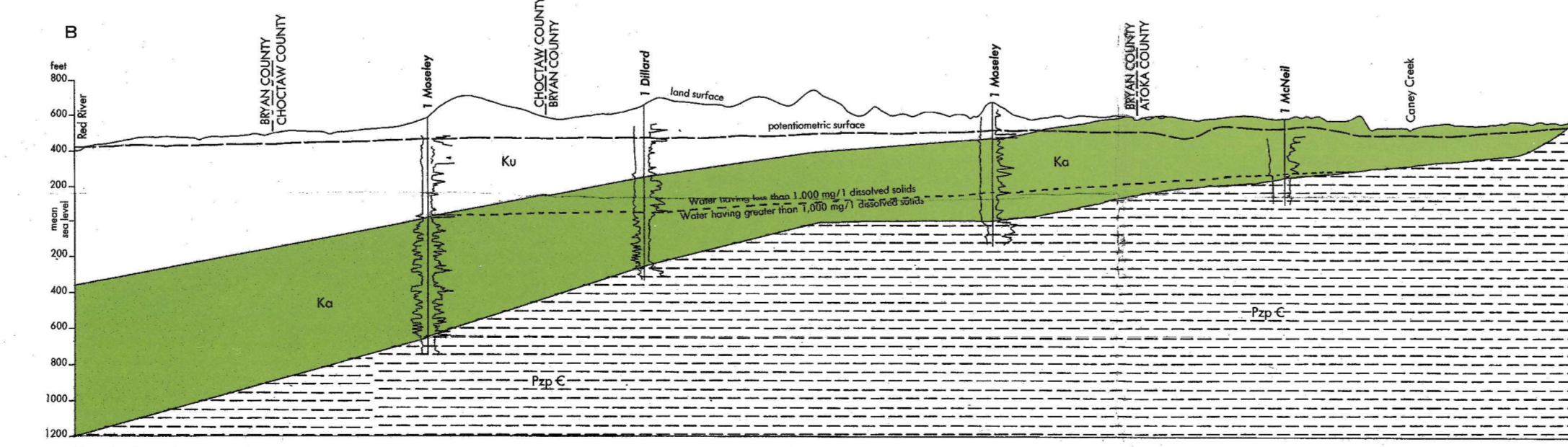
- ALLUVIUM AND TERRACE DEPOSITS  
Shown only where they directly overlie the Antlers Sandstone.
- KANSAS (Ku)
- KANSAS (Kc)
- PALEOZOIC AND PRECAMBRIAN FORMATIONS
- Geologic contact
- Well  
Upper number is depth of well, in feet; middle number is depth to water below land surface, in feet; lower number is reported well yield in gallons per minute. ? = flowing well, \* = no data.
- Spring  
Number beside spring symbol is the estimated or reported yield, in gallons per minute.



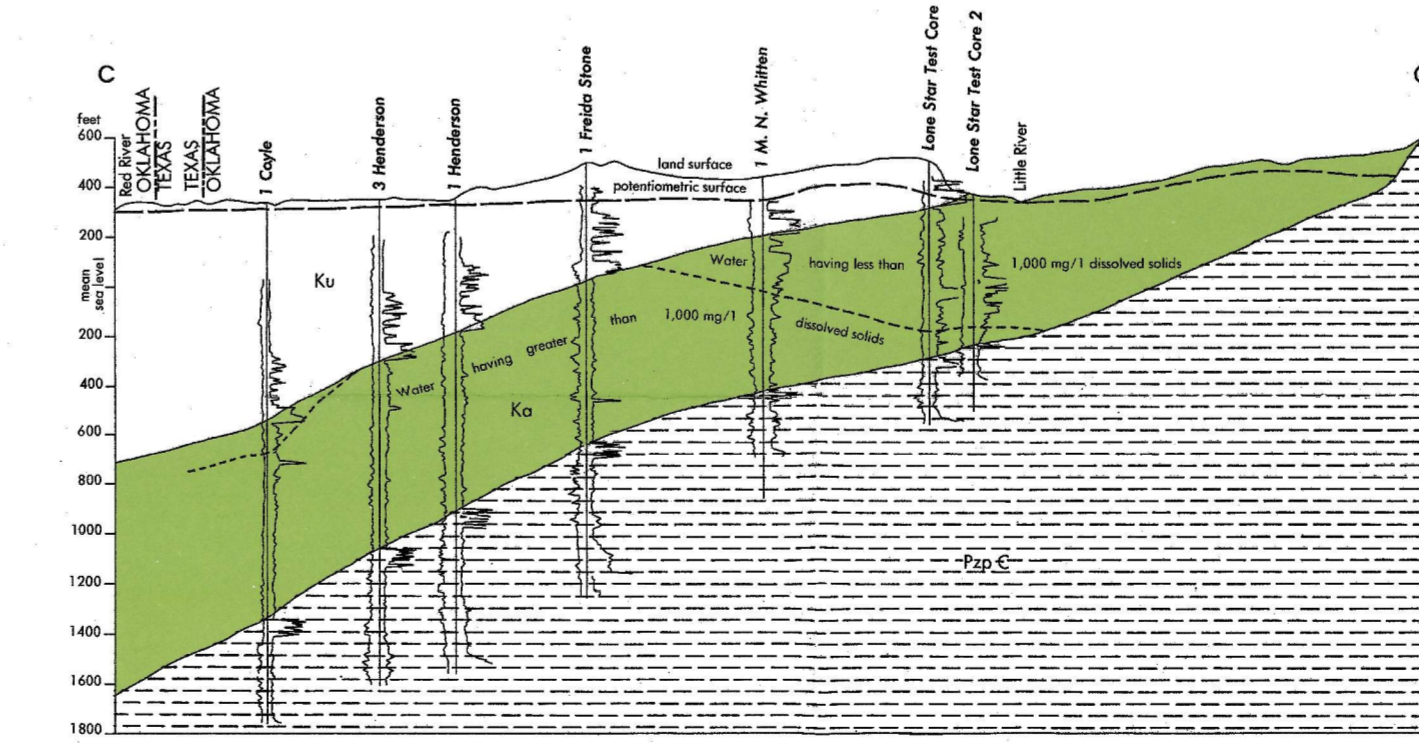
Index Map of Oklahoma Showing Area Covered by Map



Vertical scale greatly exaggerated



Vertical scale greatly exaggerated



Vertical scale greatly exaggerated

**EXPLANATION**

- KANSAS (Ku)
- KANSAS (Kc)
- PALEOZOIC AND PRECAMBRIAN FORMATIONS
- Geologic contact
- Geophysical log having spontaneous potential and short normal curve.

**GEOHYDROLOGIC MAP AND SECTIONS OF ANTLERS SANDSTONE**

By  
Donald L. Hart, Jr., and Robert E. Davis  
U.S. Geological Survey  
1980