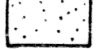
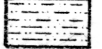


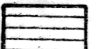
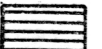




**PROGRESS GEOLOGICAL MAP
OF
OKLAHOMA**

Prepared by
Chas. N. Gould
Director
Oklahoma Geological Survey.
1911.

-  Sand hills.
-  Tertiary.
-  Cretaceous.
- Carboniferous:**
 -  Permian (Red beds)
 -  Pennsylvanian.
 -  Undifferentiated (in Ouachita Mts.)
 -  Mississippian.
- Lower Paleozoic.**
Cambrian, Ordovician, Silurian & Devonian.
-  **Igneous Rocks.**
Chiefly Granite.

SCALE IN STATUTE MILES.
0 5 10 20 30

● COUNTY SEATS.

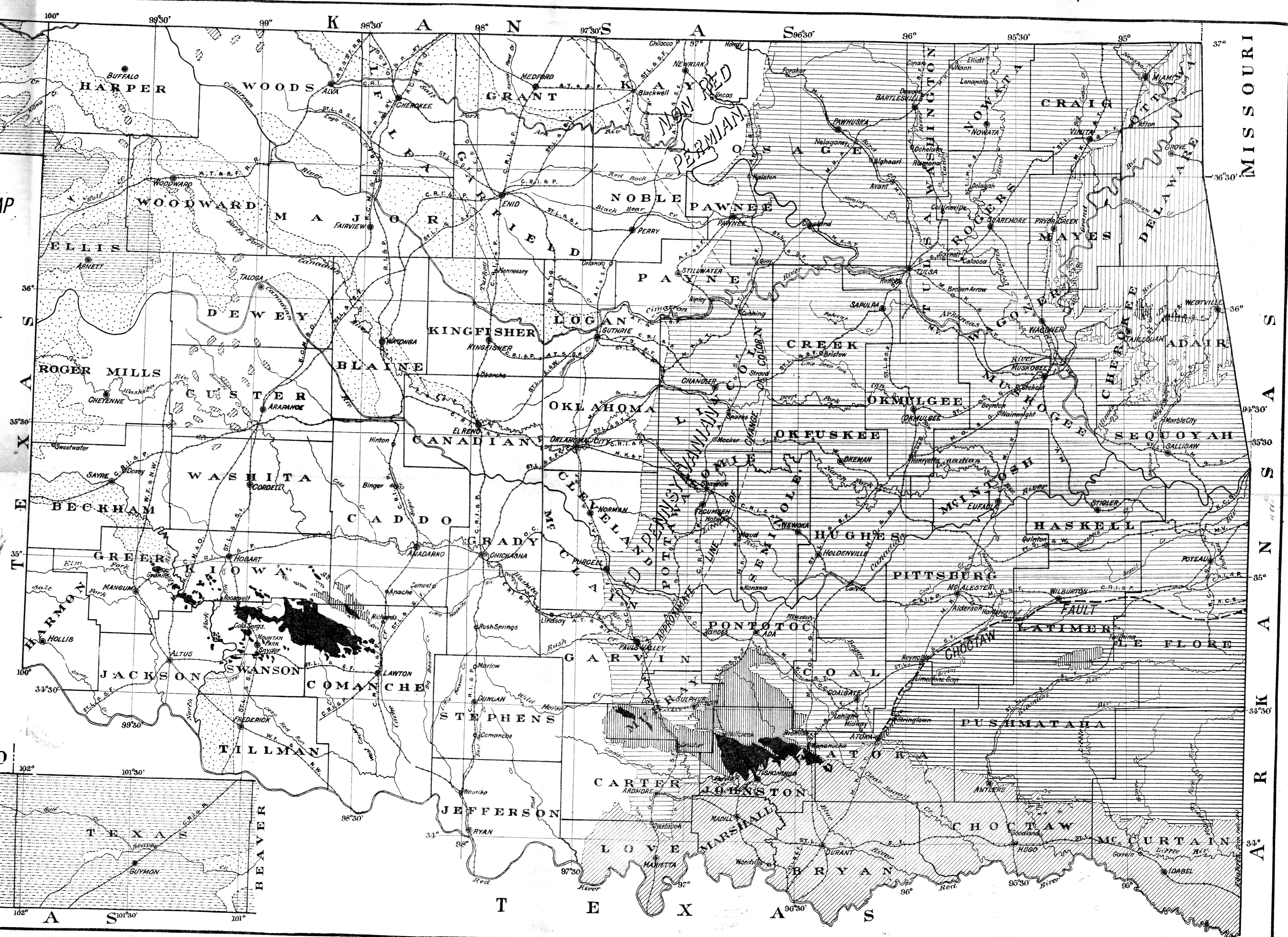
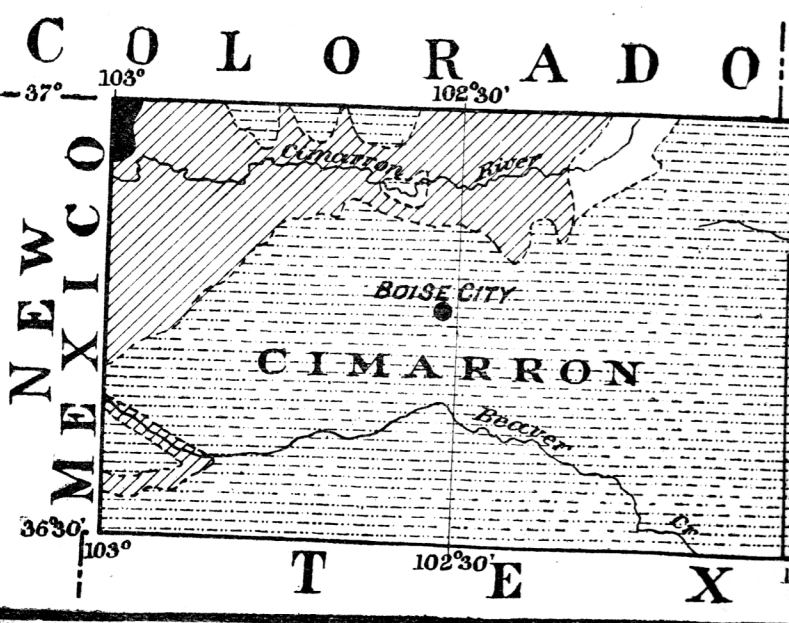


Plate III. Geological Map of Oklahoma.