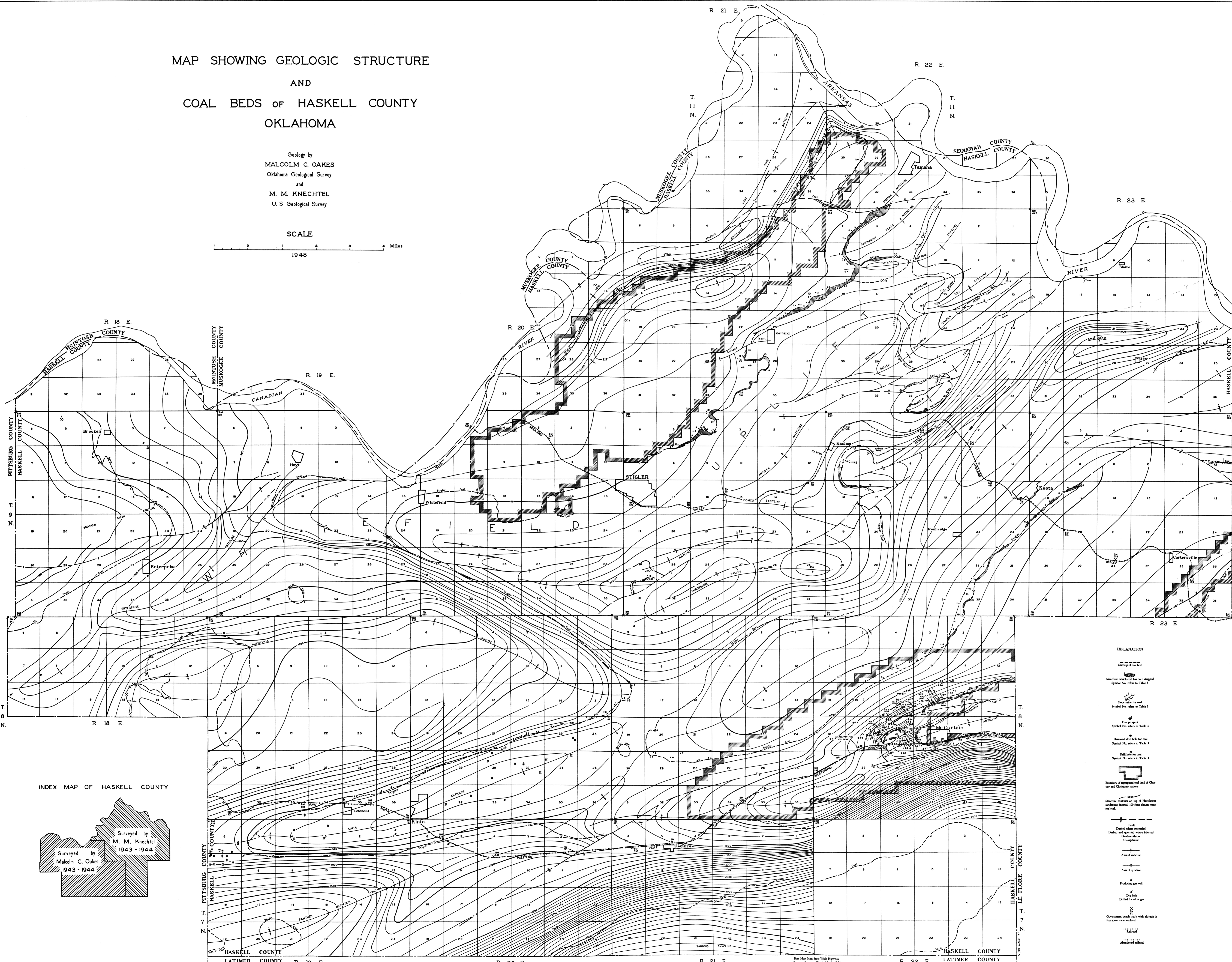
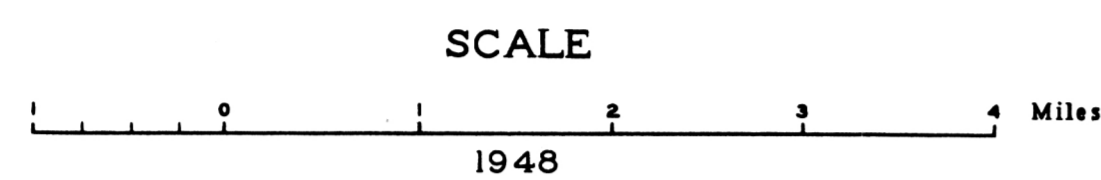
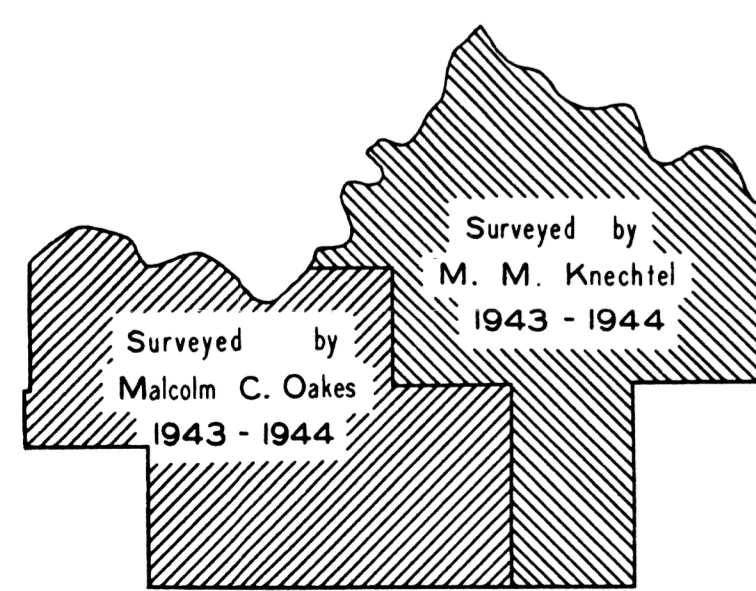


MAP SHOWING GEOLOGIC STRUCTURE AND COAL BEDS OF HASKELL COUNTY OKLAHOMA

Geology by
 MALCOLM C. OAKES
 Oklahoma Geological Survey
 and
 M. M. KNECHTEL
 U. S. Geological Survey



INDEX MAP OF HASKELL COUNTY



EXPLANATION

- Area from which coal has been stripped
Symbol No. refers to Table 3
- Shale and sandstone
Symbol No. refers to Table 3
- Coal prospect
Symbol No. refers to Table 3
- Channel sandstone
Symbol No. refers to Table 3
- Drill hole and well
Symbol No. refers to Table 3
- Boundary of segregated land of Cherokee and Chickasaw nations
- Structure contours on top of Harshorn member; interval 200 feet; datum mean sea level
- Fault
- Dashed where concealed, undated and unspaced where indicated
D-dipdown
U-updip
- Axis of anticline
- Axis of syncline
- Producing gas well
- Dry hole
- Drilled for oil or gas
- Government bench mark with altitude in feet above mean sea level
- Railroad
- Abandoned railroad

Base Map from State Wide Highway Planning Survey. Checked in the field from aerial photographs, 1943-44.