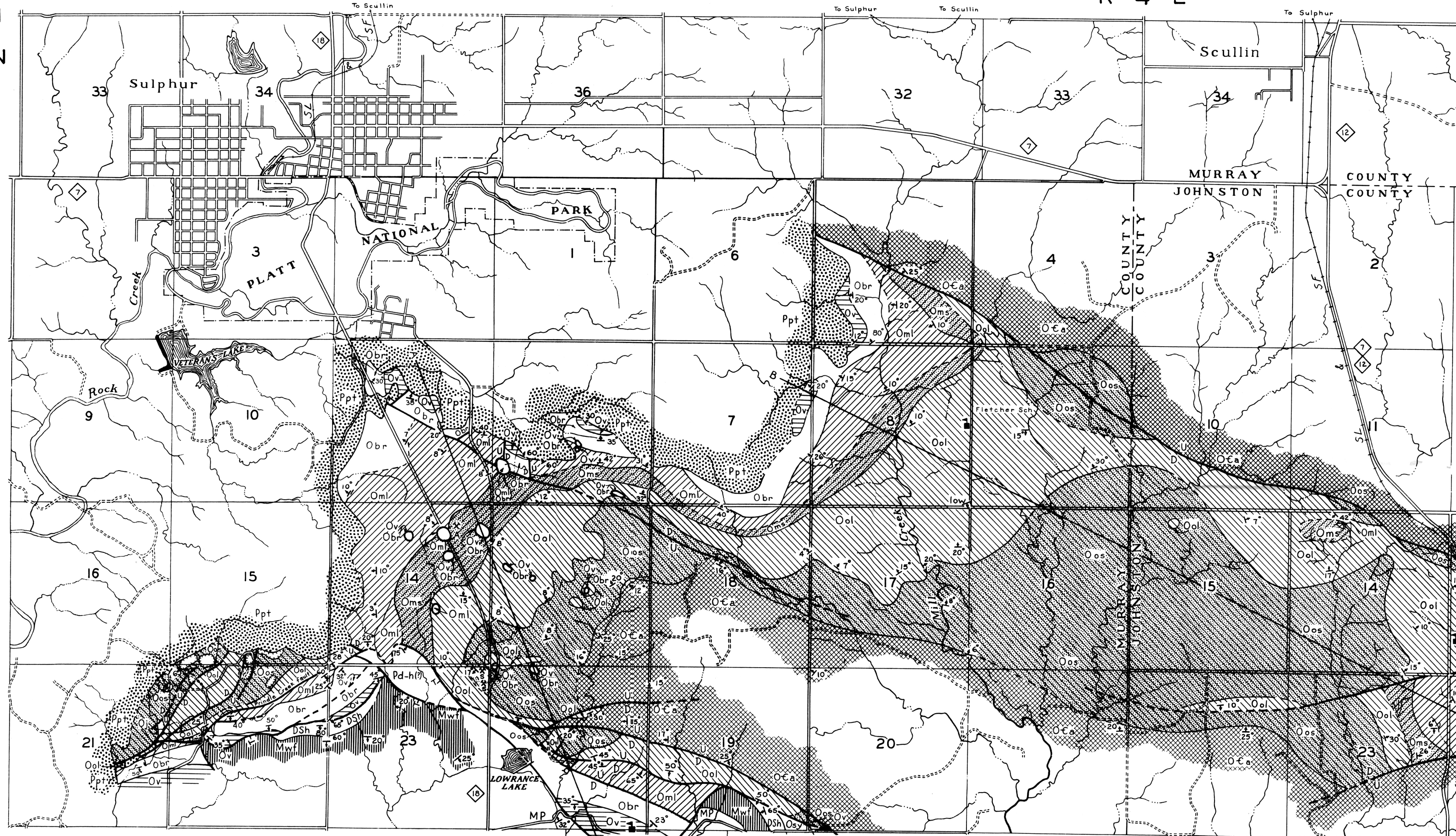


T
I
N
R 3 E

R 4 E

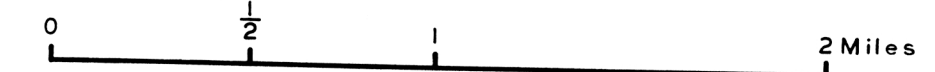
R 5 E

T
I
S



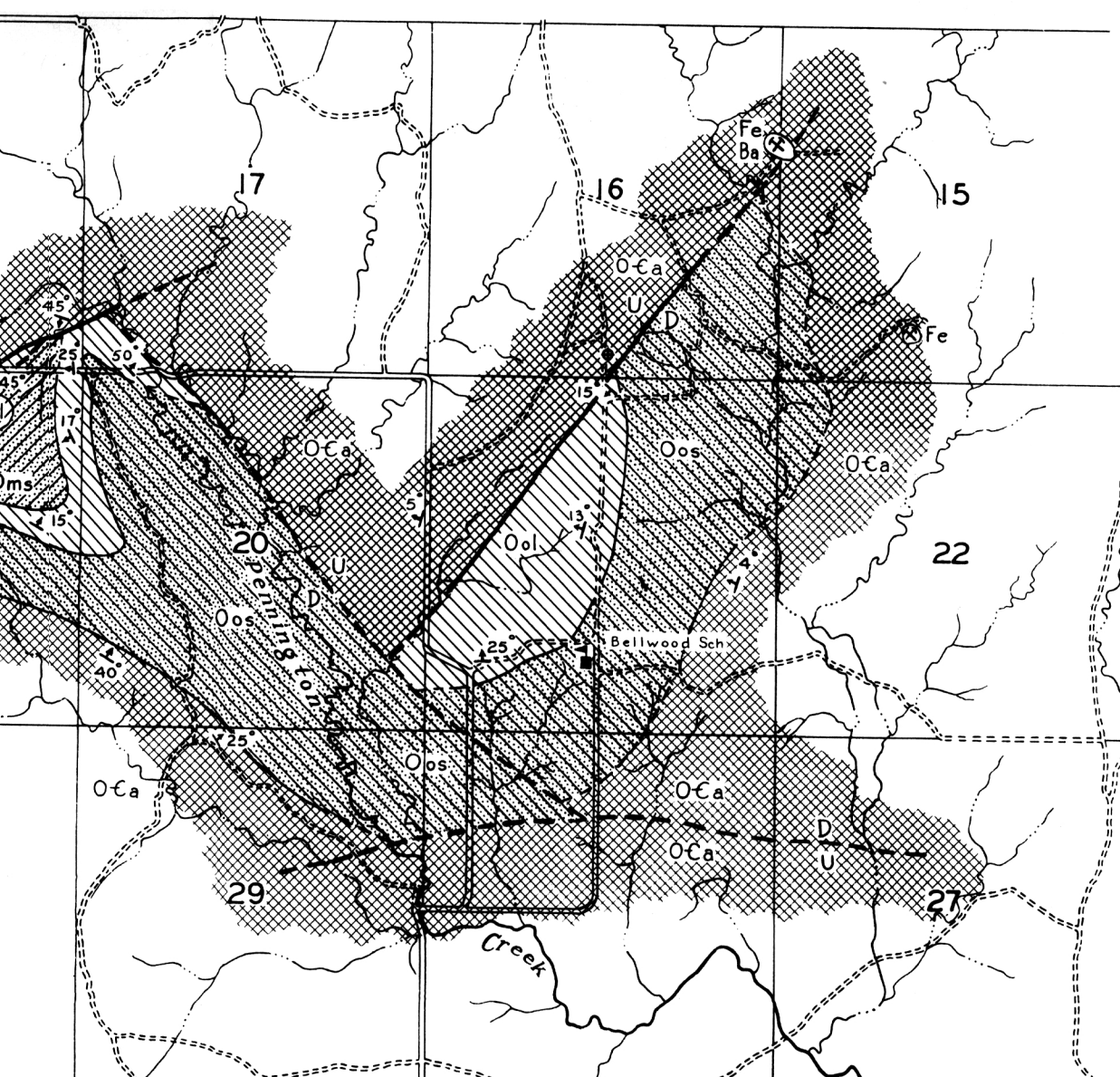
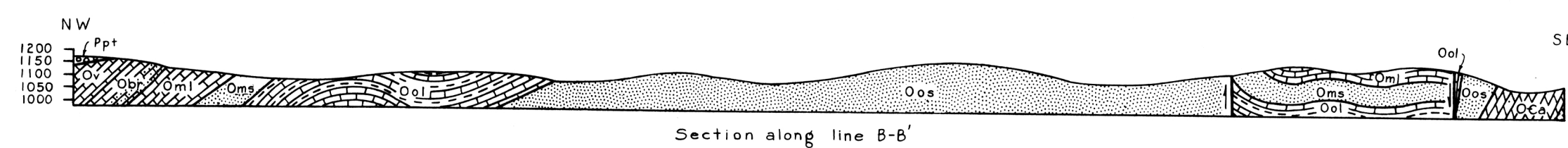
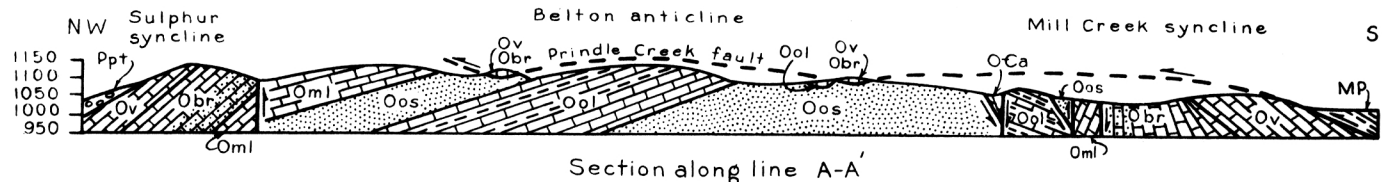
GEOLOGIC MAP AND SECTIONS
OF SULPHUR AREA
OKLAHOMA

by
Charles E. Decker and William E. Ham
1945



EXPLANATION

- Pontotoc (Vanoss) limestone conglomerate
- Pd-hB Shale, fossiliferous limestone, and limestone conglomerate, probably Devonian age
- MP Upper Mississippian (Canev shale) and lower Pennsylvanian, undifferentiated
- Woodford siliceous shale
- DSH Hinton limestone
- Osy Sylvan shale
- Ovl Viola limestone
- Obr Bromide formation undifferentiated
- McLish formation (limestone member)
- McLish formation (sandstone member)
- Ool Oil Creek formation (limestone member)
- Oos Oil Creek formation (sandstone member)
- Oj Joins formation
- A-buckle dolomite
- Fault (dashed where concealed or inferred)
- D downthrow
- U upthrow
- Overthrust fault (T overthrust side)
- Klippe
- Strike and dip of beds
- Strike of vertical beds
- Horizontal beds
- Glass sand quarry
- Sand asphalt quarry
- Sand asphalt prospect
- Limonite-barite prospect (Fe Ba)
- Limonite prospect (Fe)



Drainage and culture compiled from aerial photographs, 1940
Geology sketched in field on aerial photographs