

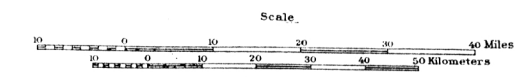
NEW MEXICO TEXAS

OKLAHOMA GEOLOGICAL SURVEY
CHAS. N. GOULD, DIRECTOR
NORMAN, OKLAHOMA
DECEMBER 1925

GEOLOGIC MAP OF OKLAHOMA

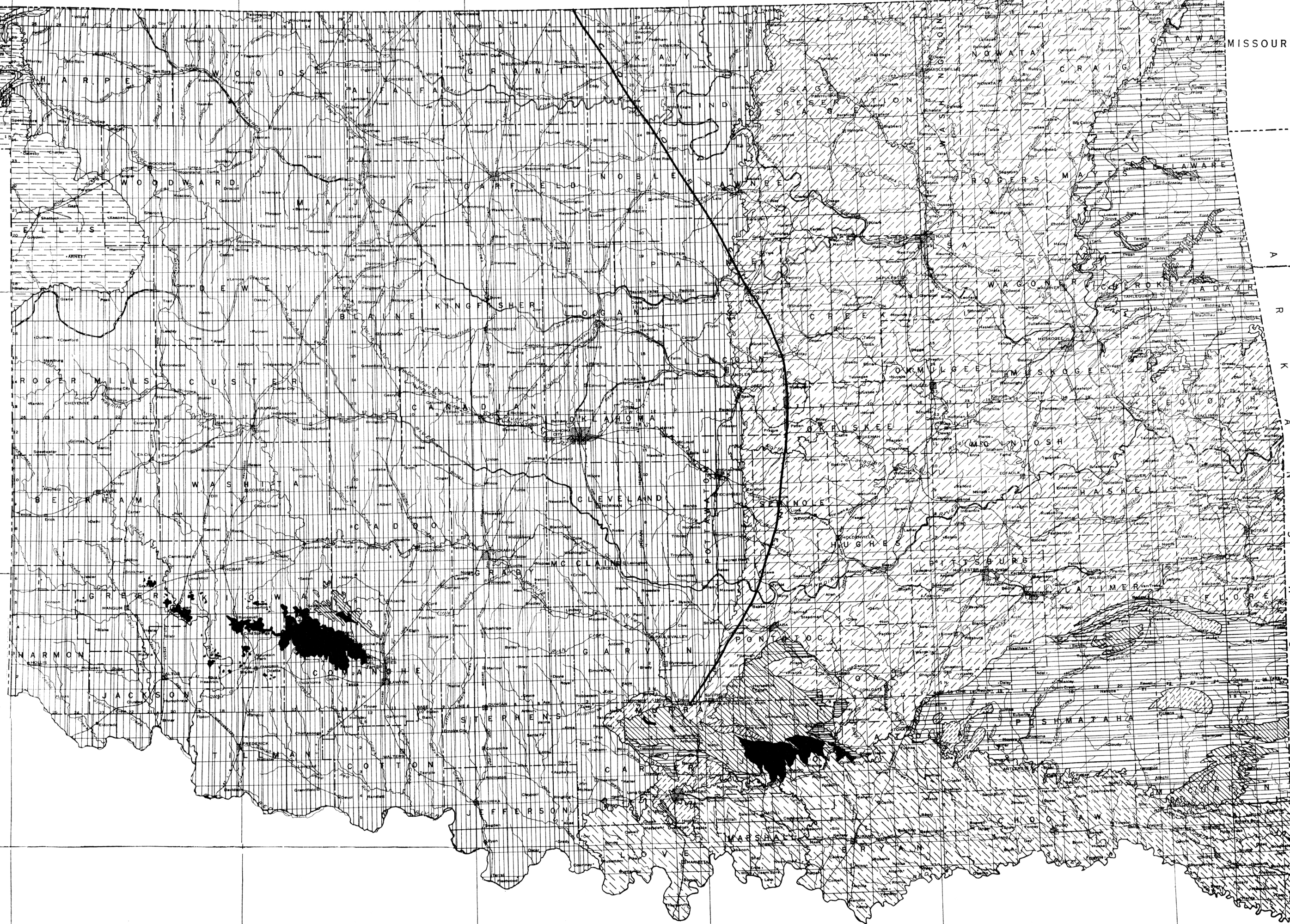
SHOWING
UPPER PALEOZOIC FORMATIONS

Completion based on this map
by the
U. S. GEOLOGICAL SURVEY



- ★ State Capital
 - Guthrie County Seat
 - Ponca City City or large town
 - Town or village
 - Steam railroad
 - Electric railroad
- LEGEND**

- Tertiary
- Cretaceous
- Permian
- Pennsylvanian
- Mississippian
- Lower Paleozoic
- Igneous



TEXAS