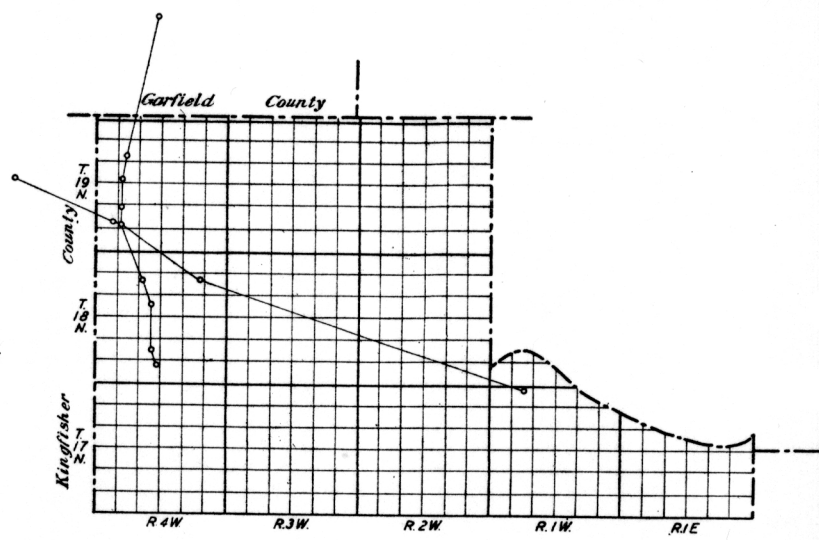
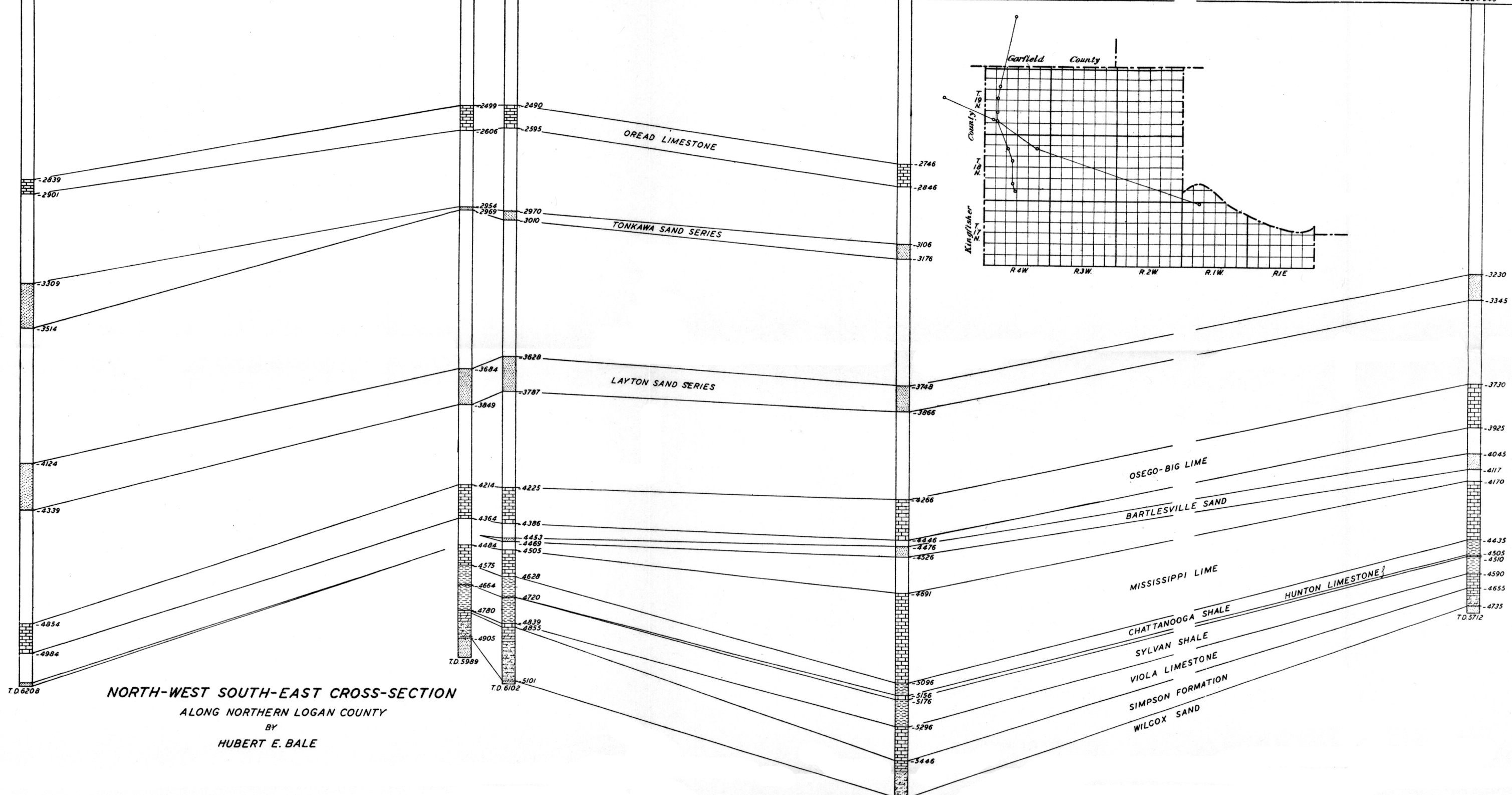


MAX KELLY BU-VI-BAR
No. 1 SCHOOL LAND
SE SW SW
16-19- SW
ELEV 1031'

ROXANA PETR. CORP.
No. 1 CULLY No. 1 STEVENS
SW NE SE SW SW SW
30-19-4W 29-19-4W
ELEV 996' ELEV 990'

HARRIS-HAUN ET AL.
No. 1 HULL
NE NE SE
17-18-4 W
ELEV 1004'

BAILEY-KILGORE ET AL.
No. 1 BAKER
NW NW NE
5-17-1W
ELEV 943'



NORTH-WEST SOUTH-EAST CROSS-SECTION
ALONG NORTHERN LOGAN COUNTY
BY
HUBERT E. BALE

MARLAND REF. CO.
No. 1 LUDMAN
NE NE SE
9-20-4
ELEV 1079'

CHAMPLIN REFCO
No. 1 CLARK
SE SE SW
8-19-4
ELEV 1006'

ROXANA PETR. CO.
No. 1 FREEMAN
SW SW SW
17-18-4
ELEV 1035'

ROXANA PETR. CO.
No. 1 ROSS
NW NW NW
29-19-4
ELEV 985'

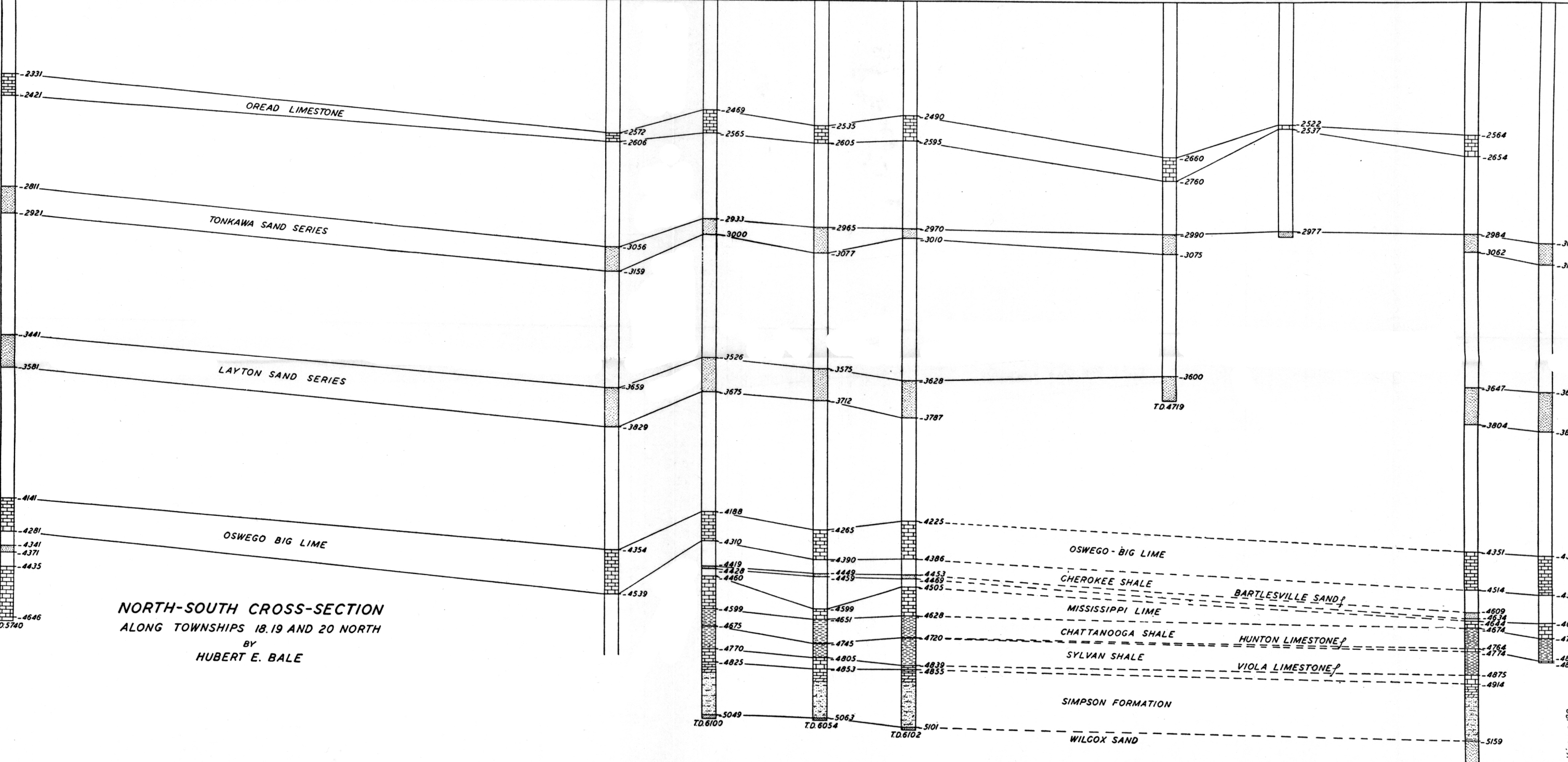
ROXANA PETR. CO.
No. 1 STEPHENS
SW SW SW
29-19-4
ELEV 990'

J.V. BAILEY ET AL.
No. 1 DEWELL
SW SW NW
17-18-4
ELEV 1010'

WOOD-GILBERT-WOOD ET AL.
No. 1 GRACE
NW NW SE
16-18-4
ELEV 1018'

SINCLAIR OIL & GAS
No. 1 KNECHT
SW SW NE
28-18-4
ELEV 1056'

PRAIRIE-TWIN STATE
No. 1 MOORE
NE SE NE
31-18-4
ELEV 1075'



NORTH-SOUTH CROSS-SECTION
ALONG TOWNSHIPS 18.19 AND 20 NORTH
BY
HUBERT E. BALE