

CARTER		PRAIRIE (B)			
08	07	05A	(A)		
Poly Johnson	Henry Vincent	799	790	777	776
005	001	01A	03A	02A	01A
03	02				
796	794	795	798	773	776
07	08	010	011	012	07
T.N.C. OIL CO.	MID-CONTINENT				
787	785	790	013	778	06
04	09				
010	776	786		776	05
	06				
Cinda Tiger	W. Alexander	773	774	770	773
791	782	01	02	03	04
05	01				
797	785	782	764	776	
09	04	04	05	04	
PAPOOSE	KINGWOOD-MAMMON	T.B. SLICK			
801	794	793			
06	03	02			
788	783	787	782	764	
08	02	01	05	01	
Sessie Alexander	Devis			Isom Grayson	
791	791	774			
08	07				
PAPOOSE	GYPSY	PRAIRIE			
794	793				
02	01				
Tobe Hill	Niggs Hill	Peter Grayson			

Index Map Showing Line of Cross Section

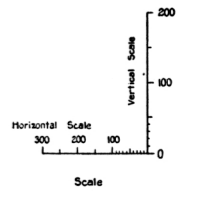
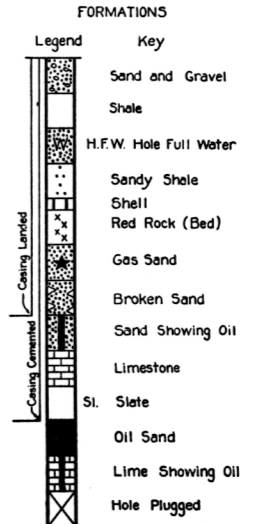


FIG. 3
Correlations by John R. Bunn

DEPARTMENT OF THE INTERIOR
BUREAU OF MINES

NORTH-SOUTH CROSS SECTION
THROUGH THE
PAPOOSE OIL FIELD
OKFUSKEE AND HUGHES COUNTY
OKLAHOMA

Drawn by: C.L. Cushman	Scale: As noted
Traced by: C.L. Cushman	No:
Approved by:	Date: May 1, 1925